

1855 Widow Niday House Of Applegate Trail (Trail): JA-H-3A¹

Hugo's Applegate Trail house locations are in Josephine County, Oregon from Louse Creek in the south to Grave Creek in the north.²

NIDAY HOUSE POINT OF INTEREST (POI)
House POI Name 1855 Niday House³ ■ JA-H-3A.
POI Identification Code
 OR-AG-25-34-06-35-n/a-n/a-JA-H-3A

1855 GLO Survey Notes for POI Page 589, Subdivisions of T. 34 S., R. 6 W., North between sections 34 & 35.

Chains

- 70.50 Spring Branch 2 lks [Links] wide and enter prairie c SE & N25NW
- 79.20 Road to Jacksonville c N60°W & SE Enter openings
- 80.00 Set Post Cor to Secs 26.27.34&35. from which **Widow Niday's house**. S47°E 4 chs [chains] dist [264' along bearing 137° from section corner]

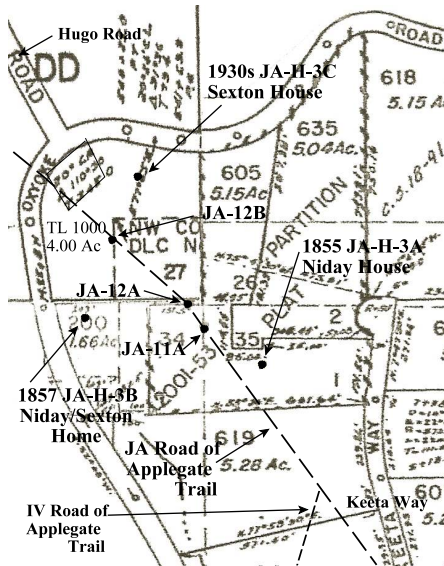
Latitude & Longitude of POI Calculated³

42° 34' 44" North Latitude
 123° 23' 3" West Longitude

POI Located With GPS Not yet, with permission.

Patent The 1855 Widow Niday house (JA-H-3) location was on the 321acre 1876 Niday Donation Land Claim No. 40.

2010 Rebecca Squyres' Private Property is the 1855 house location of pioneer Widow Caroline (Stumbo) Niday (Map 1; Aerial Photo 1).



Map 1. 1855 JA-H-3A

Diaries, Journals, & Reminiscences¹

Stakeholder

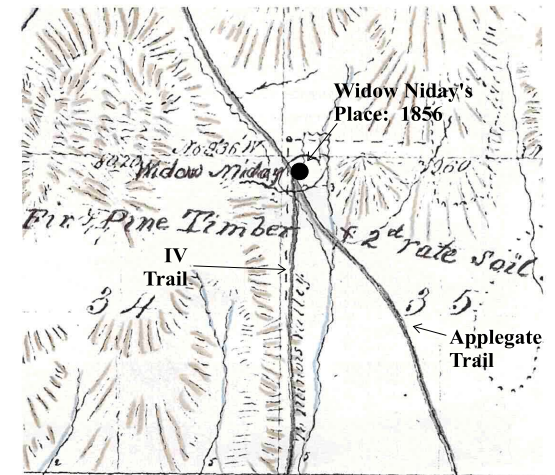
Rebecca Squyres
 TL 605, Section 35, T.34S., R.6W., WM. (Map 1)

1852 DLC Application In Hugo In 1852 Hiram and Caroline Niday had moved to Josephine County, locating on a farm in what would become Hugo near Jumpoff Joe Creek. They settled down to raise their family. Frank bought some mules and began packing supplies to the gold mines in the area. The Nidays applied for a DLC September 15 - 20, 1852 (claim application notification No. 692). Hiram passed March 1855.

1855 House JA-H-3A
 The August 1855 GLO survey notes and 1856 GLO map for Widow Niday's house locate JA-H-3A just north of the junction of the Jacksonville and the

Illinois Valley roads of the Trail (Map 2). This house was burned October 1855 during the 1853 - 1856 Rogue Indian Wars.

General Land Office (GLO) Surveys & Maps¹



Map 2. Widow Niday's Place, JA-H-3A: 1856 GLO Base Map

Interpretative Sign Not yet, with permission.

OCTA JA-H-3A Class ③ Verified Trail⁴

Be Respectful Do not trespass. JA-H-3A is located on private property not open to the public.

Want more information? Contact a member of the Hugo Emigrant Trails Committee.

1. Hugo Neighborhood. 2009 *Hugo's Applegate Trail GLO Points of Interest*. Brochure 1 in Applegate Trail GLO Surveys Series. Hugo, OR.
 2. Hugo Neighborhood. 2009 *Hugo's Illinois Valley Road Of Applegate Trail Points of Interest*. Brochure 3 in Applegate Trail GLO Surveys Series. Hugo, OR.
 3. 1856 General Land Office Field Survey Sub-Committee, Hugo Emigrant Trails Committee, Hugo Neighborhood Association & Historical Society. February 10, 2006. *General Land Office Field Survey Notes: Hugo's Applegate Trail Segments*. Hugo, OR.
 4. Office of National Trails Preservation & Oregon-California Trails Association (P.O. box 1019, Independence, MO, 64051-0519, 816-252-2276, octa@indepmo.org). July 2002, 4th edition. *Mapping Emigrants Trails MET Field Manual*.

Hugo Emigrant Trails Committee

Hugo is blessed with a rich heritage of historic roads, rough though they were. The *Hugo Emigrant Trails Committee* was formed to bring together all those who want to learn more about the early transportation in the area, from the casual admirer to the dedicated researcher. Its aim is to collect and record information about Hugo's emigrant trails, especially its two historic 1850s General Land Office mapped roads, and to share this information (e.g., through *Hugo History Day*, talks, hikes, group visits, training exercises, workshops, publications, web sites, etc.).

Karen Rose, Co-Project Leader
Mike Walker, Co-Project Leader

Diaries, Journals & Reminiscences SubCommittee

Karen Rose
Janet McKy
Kelly & Berneata Rarey
Glen Campbell
Norm Tieman
Joe & Leta Neiderheiser
Kristen Boyce
Kathy Burkey
Penny Shipley
Mike Walker

General Land Office Field Survey SubCommittee

Glen Campbell
Jim & Rene Ford
Joe Neiderheiser
Kelly Rarey
Mike Walker
Chris Wytcherley

Hugo Neighborhood Association & Historical Society's Mission

This information brochure is one of a series of documents published by the Hugo Neighborhood Association & Historical Society (*Hugo Neighborhood*). It is designed to be shared with neighbors for the purpose of helping protect our rural quality of life by promoting an informed citizenry in decision-making. The *Hugo Neighborhood* is an informal nonprofit charitable and educational organization with a land use and history mission of promoting the social welfare of its neighbors.

Land Use & History

The *Hugo Neighborhood's* land use mission is to promote Oregon Statewide Goal 1 — Citizen Involvement, and to preserve, protect, and enhance the livability and economic viability of its farms, forests, and rural neighbors. It will act, if requested, as a technical resource assisting neighbors to represent themselves.

Its history mission is to educate, collect, preserve, interpret, and research its local history and to encourage public interest in the history of the Hugo area.

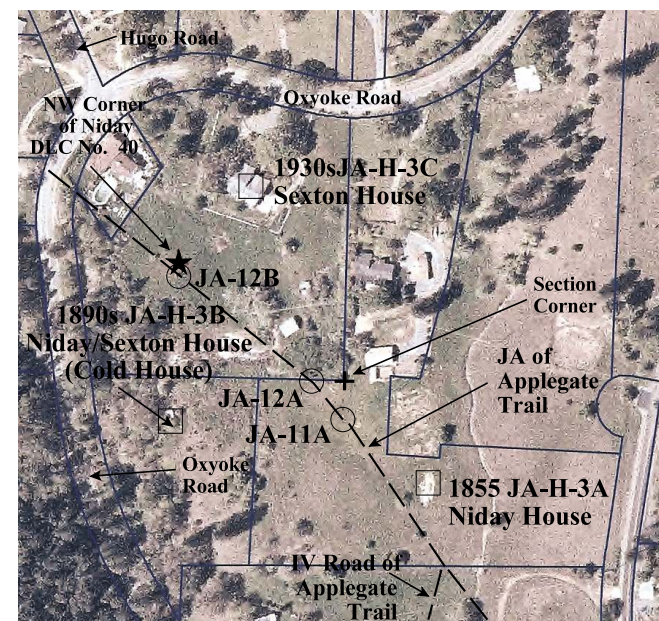
Volunteer membership dues are \$10.00 annually per family and normally used for paper, ink, envelopes, publications and mailings.

Hugo Neighborhood
3388B Merlin Rd # 195, Grants Pass, Oregon 97526
541-471-8271
Email: hugo@jeffnet.org
Web Page: <http://www.hugoneighborhood.org/>
Edited by Jean Boling, Karen Rose, & Mike Walker

1855 Niday House Of Applegate Trail: JA-H-3A



Brochure 34A of Applegate Trail
GLO Surveys Brochure Series



*Aerial Photo 1. 1855 Widow Niday House JA-H-3A
2002 Aerial Photo Base Map*

July 20, 2010
Updated November 19, 2010

Hugo Emigrant Trails Committee
Hugo Neighborhood Association &
Historical Society
Josephine County Historical Society