

## Davis House Of Applegate Trail (*Trail*): JA-H-2B<sup>1</sup>

**Hugo's Applegate Trail houses** are located in Josephine County, Oregon from Louse Creek in the south to Grave Creek in the north. There are six GLO surveyed points of interest (POI) along the *Trail* in Hugo's area of interest which locate houses.<sup>2</sup>

### DAVIS HOUSE POI

**House POI Name** Davis House<sup>3</sup> ■ JA-H-2B  
**POI ID Code** OR-AT-00-35-06-13-\*\*-JA-H-2B

**1855 GLO Survey Notes for POI** Page 9, Subdivisions of Township N<sub>o</sub> 35 South of Range N<sub>o</sub> 6 West, North between sections 13 & 14.

### Chains

40.00 Set Qu Sec Post [40 chains = 2,640']; [C.S. 1995-107 records 2,651.46' - 2,640' = 11.46']

59.92 **Mr. [Davis]'s Home** bears N72W [288" azimuth] about 8 chains distance = 528']; [59.92 chains is without correction 3,954.72' north of Sec Cor]; [NE property corner monument of Tax Lot 200 (NE TL Monument) is 3,626.46' north of Sec Cor (2,651.46' + 438.67' + 536.33' = 3,626.46)]; [59.92 chains is without correction 3,954.72' - 3,626.46' = 328.26' north of NE TL Monument. With correction 59.92 chains is 350.16' north of NE TL Monument.

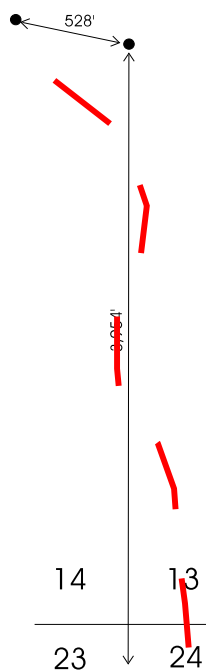
80.00 Set Post Cor to Secs 11, 12, 13, & 14 [40 chains = 2,640'] [C.S. C.S. 110-68 records 2,650.44' - 2,640' = 10.44' + 11.46' = 21.9' difference between GLO and C.S.s]

1. Hugo Neighborhood. 2009 *Hugo's Applegate Trail GLO Points of Interest*. Brochure 1 in Applegate Trail GLO Surveys Series. Hugo, OR.

2. Hugo Neighborhood. 2009 *Hugo's Illinois Valley Road Of Applegate Trail Points of Interest*. Brochure 3 in Applegate Trail GLO Surveys Series. Hugo, OR.

3. 1856 General Land Office Field Survey Sub-Committee, Hugo Emigrant Trails Committee, Hugo Neighborhood Association & Historical Society. February 10, 2006. *General Land Office Field Survey Notes: Hugo's Applegate Trail Segments*. Hugo, OR.

## Diaries, Journals, & Reminiscences<sup>1</sup>



**Patent** The house location is on the November 1, 1861 Military Patent No. 41877 (160-acres).

"Whereas, In pursuance of the Act of Congress approved March 3, 1855, entitled an "An Act in addition to certain Acts granting Bounty Land to certain Officers and Soldiers who have been engaged in the military service of the United States," there has been deposited in the GENERAL LAND OFFICE, Warrant No. 41877 for 160 acres in favor of **Lewis Heatt, Private, Captain Miller's Company Oregon Militia Rogue River War**". . . "according to the Official Plat of the Survey of said Lands returned to the GENERAL LAND OFFICE by the SURVEYOR GENERAL the said Warrant having been assigned by the said Lewis Heatt to **John Davis**. . ."

The **Davis House** location is 288" azimuth 528' from 59.92 chains north between sections 13 & 14.

**GPS Located September 5, 2006<sup>3</sup>**

**Bearing and Distance Located May 12, 2010**

2006 GPS location was ca., 30' from the May 12, 2010 C.S. bearing and distance location.

**Stakeholders** JA-H-2A is located on public land administered by Josephine County and managed by Josephine County Sportsman Association (JCSA). An old 1800s pistol frozen in the cocked position had been found near site.

## General Land Office (GLO) Surveys & County Surveys (C.S.) & Maps<sup>1</sup>



*General JA-H-2B Location*

**JA-H-2B** is in the field northwest of the JCSA's office near and west side of the large camp fire rocks. Did not stake with an interpretive sign.

**House Location Classification** Class ③ Verified.<sup>4</sup>

**Coherence Rule** Linear Uniformity. Yes  
**Corroborative Rule** Confirming Evidence. Yes  
**Collateral Rule** Physical/Topo Evidence. Yes  
**Correlation Rule** Overall Agreement. Yes

**Metal Detection; Modern Survey** With permission.

**Be Respectful** Do not trespass. Always be respectful of your neighbor's property rights. With permission, leave only footprints.

**Want more information?** Contact a member of the Hugo Emigrant Trails Committee.

