

## Illinois Valley (IV) Road Of Applegate Trail (*Trail*): Dickerson's Corner 2 (IV-7A)<sup>1</sup>

**Hugo's IV Road to Illinois Valley via Van Noys Ferry** (route of the *Trail*) is located in Josephine County, Oregon from Louse Creek in the south to Widow Niday's place in the north.<sup>2</sup>

**DICKERSON'S CORNER 2 POI**  
**Road POI Name** Dickerson's Corner 2<sup>3</sup> ■ IV-7A  
**POI ID Code** OR-AG-25-34-06-S35-W-IV-07-A

**GLO Survey Notes for POI** Page 263, Exterior line of T.34S., R.6W. South N89° 43', W [West] on South boundary of section 35.

### Chains

75.70 Branch Ck [Creek] 5 Links wide  
 77.85 **Road to Illinois Valley via Van Noys ferry** [Illinois Valley Road] leaves Jacksonville road ½ mile north [77.85 chains = 5,138.1'] [or 5,280' - 5,138.1' = 141.9']

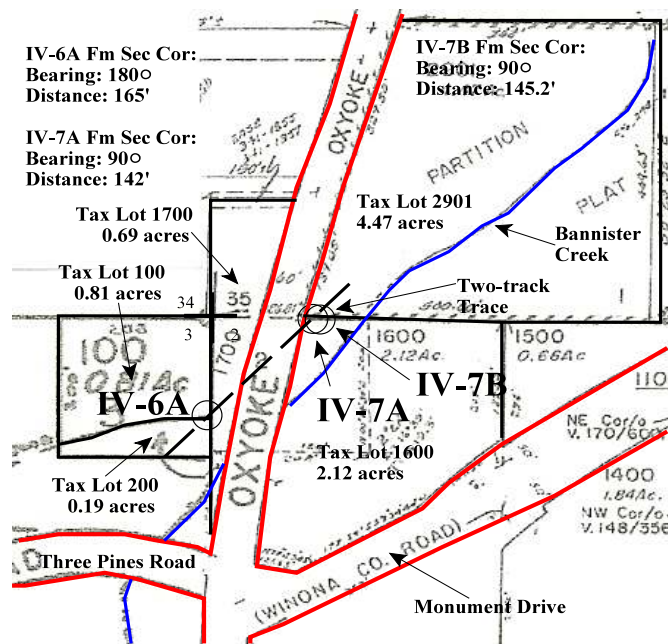
### Latitude & Longitude of POI Calculated<sup>3</sup>

42° 33' 53.5" North Latitude  
 123° 30' 33.5" West Longitude

**IV-7A From Section Corner: Sections 2, 3, 34, & 35/ Interpretative Sign** Yes. December 29, 2009 with bearing and distance from section corner: 90 degrees east 141.9' (i.e., 16 feet east of Oxyoke Road right-of-way). IV-7A is 185' from IV-6A.

1. Hugo Neighborhood. 2009 *Hugo's Applegate Trail GLO Points of Interest*. Brochure 1 in Applegate Trail GLO Surveys Series. Hugo, OR.  
 2. Hugo Neighborhood. 2009 *Hugo's Illinois Valley Road Of Applegate Trail Points of Interest*. Brochure 3 in Applegate Trail GLO Surveys Series. Hugo, OR.  
 3. 1856 General Land Office Field Survey Sub-Committee, Hugo Emigrant Trails Committee, Hugo Neighborhood Association & Historical Society. February 10, 2006. *General Land Office Field Survey Notes: Hugo's Applegate Trail Segments*. Hugo, OR.

## Diaries, Journals, & Reminiscences<sup>1</sup>



**Patents** North side of IV-7A is the Hiram Francis Niday's 320 acre donation land claim (DLC; claim notification No. 692, certificate No. 1479). The 1857 DLC surveyed IV-7B confirms the 1855 GLO survey for IV-7A (i.e., 3.3' is location difference IV-7A & IV-7B). The south side of IV-7A is the 1864 Rice Benson & Anson Turner military warrant for 169.89 acres in Hugo, Oregon (Patent No.92568).

**Private Property Stakeholders** 1. Phyllis Olds, 2.12 Ac Tax Lot 1600, Sec 2B, T.35S., R.6W.  
 2. Ronald "Ron" Harold Coimbra, 4.47 Ac Tax Lot 2901, Sec 35C, T.34S., R.6W.

## General Land Office (GLO) Surveys & Maps<sup>1</sup>

**Swale/Ruts/Two-Track** On September 11, 2010 Jim Tompkins, President, NW Chapter, OCTA, evaluated a *Trail* swale to be a definite parallel set of ruts or "Two-track".

**OCTA Trail Classification** is Class ② Used Trail or Class ③ Verified Trail.

**Coherence Rule** Linear Uniformity. Yes  
**Corroborative Rule** Confirming Evidence. Yes  
**Collateral Rule** Physical/Topo Evidence. Yes  
**Correlation Rule** Overall Agreement. Yes

**Permission Survey Work**  
 On October 7, 2010 the *GLO Subcommittee* and *Relics Subcommittee* conducted a pedestrian survey, metal detection survey, and a shovel pit testing survey at IV-7A.



**Be Respectful**  
*Do not trespass. Blue Flagged Metal Detector Hits IV-7A is located on private property not open to the public.*

**Want more information?** Contact a member of the Hugo Emigrant Trails Committee.

---

---

## Hugo Emigrant Trails Committee

Hugo is blessed with a rich heritage of historic roads, rough though they were. The *Hugo Emigrant Trails Committee* was formed to bring together all those who want to learn more about the early transportation in the area, from the casual admirer to the dedicated researcher. Its aim is to collect and record information about Hugo's emigrant trails, especially its two historic 1850s General Land Office mapped roads, and to share this information (e.g., through *Hugo History Day*, talks, hikes, group visits, training exercises, workshops, publications, web sites, etc.).

Karen Rose, Co-Project Leader  
Mike Walker, Co-Project Leader

### *Diaries, Journals & Reminiscences SubCommittee*

Karen Rose  
Janet McKy  
Kelly & Berneata Rarey  
Glen Campbell  
Norm Tieman  
Joe & Leta Neiderheiser  
Kristen Boyce  
Kathy Burkey  
Penny Shipley  
Mike Walker

### *General Land Office Field Survey SubCommittee*

Glen Campbell  
Malcolm Drake  
Joe Neiderheiser  
Kelly Rarey  
Mike Walker

---

---

## Hugo Neighborhood Association & Historical Society's Mission

This information brochure is one of a series of documents published by the Hugo Neighborhood Association & Historical Society (*Hugo Neighborhood*). It is designed to be shared with neighbors for the purpose of helping protect our rural quality of life by promoting an informed citizenry in decision-making. The *Hugo Neighborhood* is an informal nonprofit charitable and educational organization with a land use and history mission of promoting the social welfare of its neighbors.

### Land Use & History

The *Hugo Neighborhood's* land use mission is to promote Oregon Statewide Goal 1 — Citizen Involvement, and to preserve, protect, and enhance the livability and economic viability of its farms, forests, and rural neighbors. It will act, if requested, as a technical resource assisting neighbors to represent themselves.

Its history mission is to educate, collect, preserve, interpret, and research its local history and to encourage public interest in the history of the Hugo area.

Volunteer membership dues are \$10.00 annually per family and normally used for paper, ink, envelopes, publications and mailings.

### *Hugo Neighborhood*

3388B Merlin Rd # 195, Grants Pass, Oregon 97526

541-471-8271

Email: [hugo@jeffnet.org](mailto:hugo@jeffnet.org)

Web Page: <http://jeffnet.org/~hugo/>

Edited by Jean Boling, Kelly Rarey,  
Karen Rose, & Mike Walker

---

---

## IV Road Of Applegate Trail: Dickerson's Corner 2 (IV-7A)



Brochure 29 of Applegate Trail GLO  
Surveys Brochure Series



*Ron Coimbra At His South Property Line  
Next to IV-7A & Applegate Trail Swale*

**September 14, 2010  
Updated October 14, 2010**

**Hugo Emigrant Trails Committee  
Hugo Neighborhood Association &  
Historical Society  
Josephine County Historical Society**