

Illinois Valley (IV) Road Of Applegate Trail (*Trail*): Dickerson's Corner 1 (IV-6A)¹

Hugo's IV Road to Illinois Valley via Van Noys Ferry (route of the *Trail*) is located in Josephine County, Oregon from Louse Creek in the south to Widow Niday's place in the north. There are nine GLO surveyed points of interest (POI) along the IV Road in Hugo's area of interest.²

DICKERSON'S CORNER 1 POI

Road POI Name Dickerson's Corner 1³ ■ IV-6A
POI ID Code OR-AG-25-35-06-02/03-S-IV-06-A

1855 GLO Survey Notes for POI Page 25, Subdivisions of T.35S., R.6W., South between sections 2 & 3.

Chains

2.50 Road to Van Noys Ferry [Illinois Valley Road] c NE & SW [2.5 chains = 165 feet]
4.27 Stream 2 lks wide
82.47 to Sec Cor [82.47 chains = 5,443.02]

Latitude & Longitude of POI Calculated³

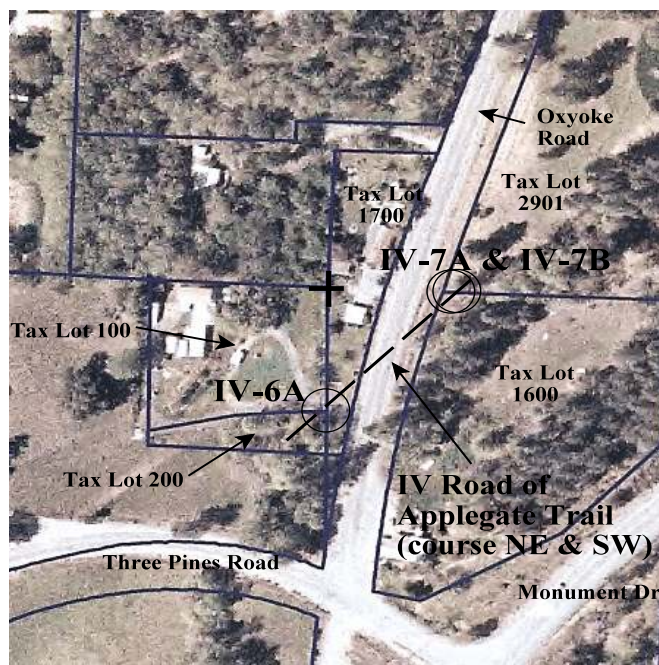
42° 33' 52.90" North Latitude
123° 23' 6.90" West Longitude

IV-6A From Section Corner: Sections 2, 3, 34, & 35 With property owners' permission IV-6A was located with bearing and distance from section corner: 180 degrees south 165 feet. 1855 GLO IV-6A is approximately 185' from two other surveyed sites: 1855 GLO IV-7A and 1857 DLC IV-7B.

1. Hugo Neighborhood. 2009 *Hugo's Applegate Trail GLO Points of Interest*. Brochure 1 in Applegate Trail GLO Surveys Series. Hugo, OR.
2. Hugo Neighborhood. 2009 *Hugo's Illinois Valley Road Of Applegate Trail Points of Interest*. Brochure 3 in Applegate Trail GLO Surveys Series. Hugo, OR.

Diaries, Journals, & Reminiscences¹

Interpretative Sign Located December 29, 2009.



Permission Survey Work On October 7, 2010 the *GLO SubCommittee* and *Relics SubCommittee* conducted pedestrian survey, metal detection survey, and shovel pit testing survey at private ownership IV-6A.

Patent IV-6A is located on a military warrant. On June 15, 1864 Rice Benson & Anson Turner were issued a military warrant certificate for 169.89 acres in Hugo, Oregon (Patent No.92568).

General Land Office (GLO) Surveys & Maps¹

Private Property Stakeholders

- Ralph & Bonnie Morrison
.81 acre Tax Lot 100, Sec 3, T.35S., R.6W., W.M.
- Carole Kolander
.69 acre Tax Lot 1700, Sec 2B, T.35S., R.6W., W.M.

OCTA Trail Classification is Class ③ Verified Trail or Class ④ Verified Altered Trail.

Coherence Rule Linear Uniformity. Yes
Corroborative Rule Confirming Evidence. Yes
Collateral Rule Physical/Topo Evidence. Yes
Correlation Rule Overall Agreement. Yes

Be Respectful *Do not trespass. IV-6A is located on private property not open to the public.*

Want more information?

Contact a member of the Hugo Emigrant Trails Committee.

3. 1856 General Land Office Field Survey Sub-Committee, Hugo Emigrant Trails Committee, Hugo Neighborhood Association & Historical Society. February 10, 2006. *General Land Office Field Survey Notes: Hugo's Applegate Trail Segments*. Hugo, OR.



Relics SubCommittee
At Shovel Test Pit

Hugo Emigrant Trails Committee

Hugo is blessed with a rich heritage of historic roads, rough though they were. The *Hugo Emigrant Trails Committee* was formed to bring together all those who want to learn more about the early transportation in the area, from the casual admirer to the dedicated researcher. Its aim is to collect and record information about Hugo's emigrant trails, especially its two historic 1850s General Land Office mapped roads, and to share this information (e.g., through *Hugo History Day*, talks, hikes, group visits, training exercises, workshops, publications, web sites, etc.).

Karen Rose, Co-Project Leader
Mike Walker, Co-Project Leader

Diaries, Journals & Reminiscences SubCommittee

Karen Rose
Janet McKy
Kelly & Berneata Rarey
Glen Campbell
Norm Tieman
Joe & Leta Neiderheiser
Kristen Boyce
Kathy Burkey
Penny Shipley
Mike Walker

General Land Office Field Survey SubCommittee

Glen Campbell
Malcolm Drake
Joe Neiderheiser
Kelly Rarey
Mike Walker

Hugo Neighborhood Association & Historical Society's Mission

This information brochure is one of a series of documents published by the Hugo Neighborhood Association & Historical Society (*Hugo Neighborhood*). It is designed to be shared with neighbors for the purpose of helping protect our rural quality of life by promoting an informed citizenry in decision-making. The *Hugo Neighborhood* is an informal nonprofit charitable and educational organization with a land use and history mission of promoting the social welfare of its neighbors.

Land Use & History

The *Hugo Neighborhood's* land use mission is to promote Oregon Statewide Goal 1 — Citizen Involvement, and to preserve, protect, and enhance the livability and economic viability of its farms, forests, and rural neighbors. It will act, if requested, as a technical resource assisting neighbors to represent themselves.

Its history mission is to educate, collect, preserve, interpret, and research its local history and to encourage public interest in the history of the Hugo area. Volunteer membership dues are \$10.00 annually per family and normally used for paper, ink, envelopes, publications and mailings.

Hugo Neighborhood

3388B Merlin Rd # 195, Grants Pass, Oregon 97526
541-471-8271
Email: hugo@jeffnet.org
Web Page: <http://jeffnet.org/~hugo/>

Edited by Jean Boling, Glen Campbell, Malcolm Drake,
Carole Kolander, Kelly Rarey, Karen Rose, & Mike Walker

IV Road Of Applegate Trail: Dickerson's Corner 1 (IV-6A)



Brochure 28 of Applegate Trail GLO
Surveys Brochure Series



IV-6A Inventory Workers: Kelly Rarey, Carole Kolander, Malcom Drake, & Glenn Campbell

March 10, 2010
Updated October 13, 2010

**Hugo Emigrant Trails Committee
Hugo Neighborhood Association &
Historical Society
Josephine County Historical Society**