

Illinois Valley (IV) Road Of Applegate Trail (Trail): Jumpoff Joe Creek 2 (IV-4)¹

Hugo's IV Road to Illinois Valley via Van Noys Ferry (route of the Trail) is located in Josephine County, Oregon from Louse Creek in the south to Widow Niday's place in the north. There are nine GLO surveyed points of interest (POI) along the IV Road in Hugo's area of interest.²

JUMPOFF JOE CREEK 2 POI

Road POI Name Jumpoff Joe Creek 2³ ■ IV-4
POI ID Code OR-AT-00-35-06-09/10-N-IV-04

GLO Survey Notes for POI Page 34, Subdivisions of Township N₀ 35 South of Range N₀ 6 West, North between sections 9 & 10.

Chains

7.00 to Jump Off Jo Creek 40 lks wide c SW [40 links = 316.8"/12 = 26.4']
23.00 Road to Van Noys & Illinois Valley [IV Road] SW & NE [23.00 chains = 1,518']
51.00 leave Creek bottom c SW & NE
54.00 to top of Bluff
80.00 To Sec Cor to Secs 3.4.9 & 10 [80 chains = 5,280']
½ mile bottom land 1st Rate

Latitude & Longitude of POI Calculated³

42° 32' 21.5" North Latitude
123° 24' 17.5" West Longitude

POI Located With GPS Not yet; with permission.

Interpretative Sign; Metal Detection Work Not yet; with permission.

Diaries, Journals, & Reminiscences¹

Diaries, Journals and Reminiscences: 1846⁵
<http://www.jeffnet.org/~hugo/applegat.htm>. Virgil Pringle on IV Road diary notes:

“Saturday, October 17, 1846 – Travel 8 miles, road good and a good camp which is not common, the country being mostly burnt. 8 – 2,218 miles.”

Travel was from a camp on north side of Rogue River to camp approximately ½ mile northeast of Jumpoff Joe Creek (just northeast of IV-4) on the Crockett homestead.

1876 Hugo Homestead⁴ On August 15, 1876 Garrett Crockett was issued a homestead patent for 160 acres along Bannister Creek (Patent No. 702). Farmer Crockett, with wife Eurydica “Murcy”, was living in Hugo in 1880 with their three children: Louisa, Edward, and Robert. Judge Garrett Crockett was elected to the office of Josephine County Judge in 1882 and 1884. The Crocketts are now living on their 160 acre Hugo farm near Tunnel No. 9 (Eurydica's brother Mackinzie's 1885 cash entry - Patent 5510).

OCTA Trail Classification Class ③ or Class ④
Verified Trail.

Coherence Rule Linear Uniformity. Yes

Corroborative Rule Confirming Evidence. Yes

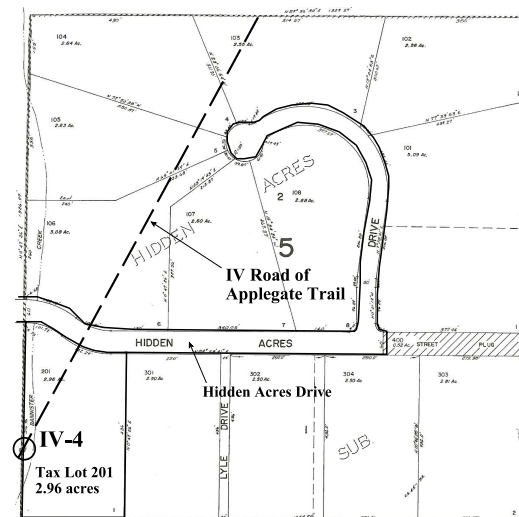
Collateral Rule Physical/Topo Evidence. No

Correlation Rule Overall Agreement. Yes

1. Hugo Neighborhood. 2009 *Hugo's Applegate Trail GLO Points of Interest*. Brochure 1 in Applegate Trail GLO Surveys Series. Hugo, OR.

2. Hugo Neighborhood. 2009 *Hugo's Illinois Valley Road Of Applegate Trail Points of Interest*. Brochure 3 in Applegate Trail GLO Surveys Series. Hugo, OR.

General Land Office (GLO) Surveys & Maps¹



IV-4 Stakeholders

Dee Dee Debora Dunn
3.65 Acres TL 104, Sec. 9DA, T.35S., R.6W., W.M.

Frederick Santos
2.96 Acres TL 201, Sec. 10CB, T.35S., R.6W., W.M.

Be Respectful Do not trespass. IV-4 is located on private property not open to the public.

Want more information? Contact an officer of the Hugo Neighborhood.

3. 1856 General Land Office Field Survey Sub-Committee, Hugo Emigrant Trails Committee, Hugo Neighborhood Association & Historical Society. February 10, 2006. *General Land Office Field Survey Notes: Hugo's Applegate Trail Segments*. Hugo, OR.

4. Hugo Neighborhood. 2009 *Hugo's Illinois Valley Road Of Applegate Trail Points of Interest*. Brochure 3 in Applegate Trail GLO Surveys Series. Hugo, OR.

Hugo Emigrant Trails Committee

Hugo is blessed with a rich heritage of historic roads, rough though they were. The *Hugo Emigrant Trails Committee* was formed to bring together all those who want to learn more about the early transportation in the area, from the casual admirer to the dedicated researcher. Its aim is to collect and record information about Hugo's emigrant trails, especially its two historic 1850s General Land Office mapped roads, and to share this information (e.g., through *Hugo History Day*, talks, hikes, group visits, training exercises, workshops, publications, web sites, etc.).

Karen Rose, Co-Project Leader
Mike Walker, Co-Project Leader

Diaries, Journals & Reminiscences SubCommittee

Karen Rose
Janet McKy
Kelly & Berneata Rarey
Glen Campbell
Norm Tieman
Joe & Leta Neiderheiser
Kristen Boyce
Kathy Burkey
Penny Shipley
Mike Walker

General Land Office Field Survey SubCommittee

Glen Campbell
Jim & Rene Ford
Joe Neiderheiser
Kelly Rarey
Mike Walker
Chris Wytcherley

C:\Documents and Settings\mike\My Documents\Genealogy\Applegate Trail
GLO Surveyed Points\IV4 Jumpoff Joe Creek 2\BROCHURE 26 IV Road
Jumpoff Joe Creek 2_IV4 030810.wpd

Hugo Neighborhood Association & Historical Society's Mission

This information brochure is one of a series of documents published by the Hugo Neighborhood Association & Historical Society (*Hugo Neighborhood*). It is designed to be shared with neighbors for the purpose of helping protect our rural quality of life by promoting an informed citizenry in decision-making. The *Hugo Neighborhood* is an informal nonprofit charitable and educational organization with a land use and history mission of promoting the social welfare of its neighbors.

Land Use & History

The *Hugo Neighborhood's* land use mission is to promote Oregon Statewide Goal 1 — Citizen Involvement, and to preserve, protect, and enhance the livability and economic viability of its farms, forests, and rural neighbors. It will act, if requested, as a technical resource assisting neighbors to represent themselves.

Its history mission is to educate, collect, preserve, interpret, and research its local history and to encourage public interest in the history of the Hugo area. Volunteer membership dues are \$10.00 annually per family and normally used for paper, ink, envelopes, publications and mailings.

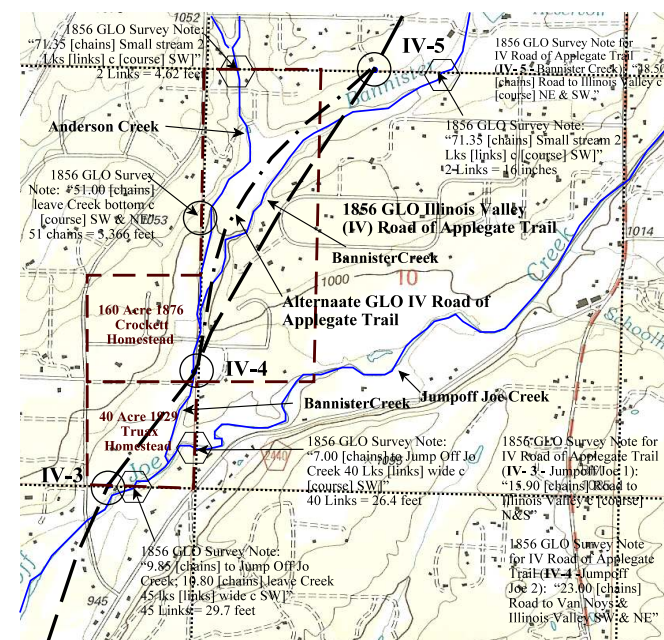
Hugo Neighborhood
3388B Merlin Rd # 195,
Grants Pass, Oregon 97526, 541-471-8271
Email: hugo@jeffnet.org
Web Page: <http://jeffnet.org/~hugo/>

Edited by Jean Boling, Kelly Rarey,
Karen Rose, & Mike Walker

IV Road Of Applegate Trail: Jumpoff Joe Creek 2 (IV-4)



Brochure 26 of Applegate Trail GLO
Surveys Brochure Series



March 8, 2010

Hugo Emigrant Trails Committee
Hugo Neighborhood Association &
Historical Society
Josephine County Historical Society