

## Illinois Valley (IV) Road Of Applegate Trail (Trail): Jumpoff Joe Creek 1 (IV-3)<sup>1</sup>

Hugo's IV Road to Illinois Valley via Van Noys Ferry (route of the Trail) is located in Josephine County, Oregon from Louse Creek in the south to Widow Niday's place in the north. There are nine GLO surveyed points of interest (POI) along the IV Road in Hugo's area of interest.<sup>2</sup>

### JUMPOFF JOE CREEK 1 POI

**Road POI Name** Jumpoff Joe Creek 1<sup>3</sup> ■ IV-3.  
**POI ID Code** OR-AT-00-35-06-09/16-W-IV-03.

**1855 GLO Survey Notes for POI** Page 44, Subdivisions Township 35 South of Range 6 West, West on True Line Between Secs 9 & 16.

### Chains

- 10.80 leave Creek [Jumpoff Joe] 45 lks wide c SW [creek is 45 links = 356.4"/12 = 29.7' wide; 10.8 chains = 712.8']
- 15.90 **Road to Illinois Valley** [Illinois Valley Road] c N&S [15.9 chains = 1,049.4'; road is 336.6' from creek]
- 79.85 To Sec Corn [79.85 chains = 5,270.1']

### Latitude & Longitude of POI Calculated<sup>3</sup>

42° 32' 7" North Latitude  
 123° 24' 32" West Longitude

**POI Located With GPS; Interpretative Sign; Metal Detection Work** Not yet; with permission.

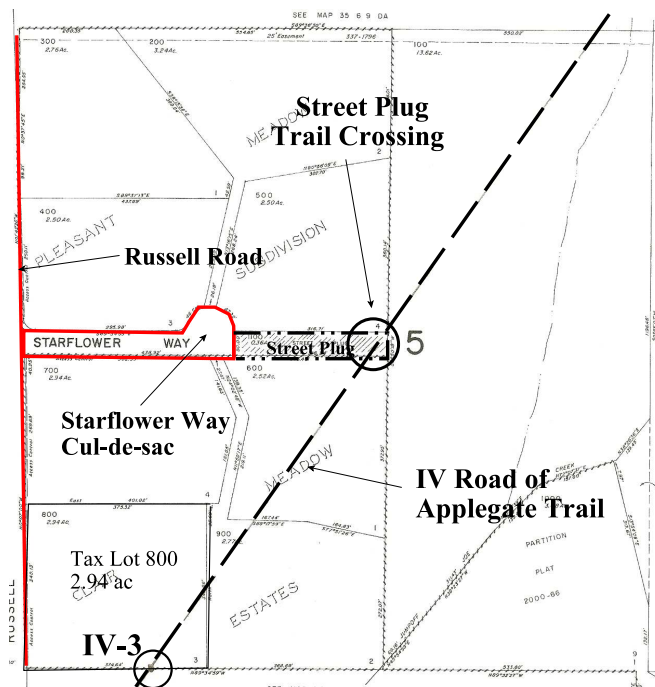
1. Hugo Neighborhood. 2009 *Hugo's Applegate Trail GLO Points of Interest*. Brochure 1 in Applegate Trail GLO Surveys Series. Hugo, OR.  
 2. Hugo Neighborhood. 2009 *Hugo's Illinois Valley Road Of Applegate Trail Points of Interest*. Brochure 3 in Applegate Trail GLO Surveys Series. Hugo, OR.

## Street Plug Trail Crossing For Starflower Way<sup>1</sup>

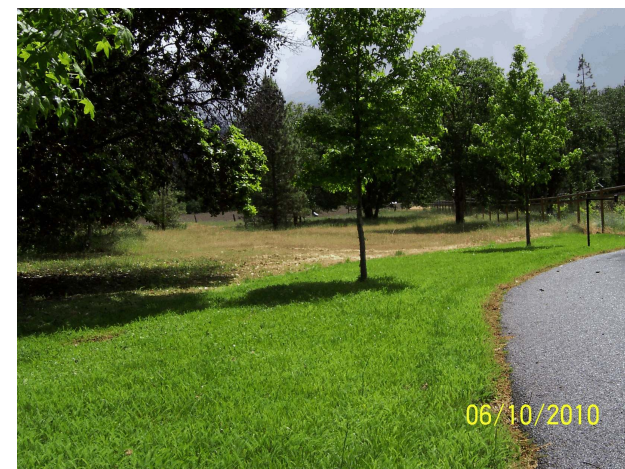
**Private Ownership/Stakeholders** IV-3 is located on private property.

### Public Ownership Of Starflower Way Street Plug

The 50' public street plug (Tax Lot 1100) at the east end of Starflower Way can be used by the public as publicly administered lands. The dimensions of Tax Lot 1100 are: north length equals 318.71' long, south length equals 345.48' long, by 50 wide. The Illinois Valley Road is located near the eastern end of street plug Tax Lot 1100.



## General Land Office (GLO) Surveys & Maps<sup>1</sup>



*Looking East At Street Plug From Starflower Way Cul-de-sac*

### OCTA Trail Classification Of Street Plug Crossing

Class ③ or Class ④ Verified Trail.

- Coherence Rule** Linear Uniformity. Yes
- Corroborative Rule** Confirming Evidence. Yes
- Collateral Rule** Physical/Topo Evidence. No
- Correlation Rule** Overall Agreement. Yes

**Be Respectful** *Do not trespass. IV-3 is located on private property not open to the public.*

**Want more information?** Contact a member of the Hugo Emigrant Trails Committee.

3. 1856 General Land Office Field Survey Sub-Committee, Hugo Emigrant Trails Committee, Hugo Neighborhood Association & Historical Society. February 10, 2006. *General Land Office Field Survey Notes: Hugo's Applegate Trail Segments*. Hugo, OR.

## Hugo Emigrant Trails Committee

Hugo is blessed with a rich heritage of historic roads, rough though they were. The *Hugo Emigrant Trails Committee* was formed to bring together all those who want to learn more about the early transportation in the area, from the casual admirer to the dedicated researcher. Its aim is to collect and record information about Hugo's emigrant trails, especially its two historic 1850s General Land Office mapped roads, and to share this information (e.g., through *Hugo History Day*, talks, hikes, group visits, training exercises, workshops, publications, web sites, etc.).

Karen Rose, Co-Project Leader  
Mike Walker, Co-Project Leader

### *Diaries, Journals & Reminiscences SubCommittee*

Karen Rose  
Janet McKy  
Kelly & Berneata Rarey  
Glen Campbell  
Norm Tieman  
Joe & Leta Neiderheiser  
Kristen Boyce  
Kathy Burkey  
Penny Shipley  
Mike Walker

### *General Land Office Field Survey SubCommittee*

Glen Campbell  
Jim & Rene Ford  
Joe Neiderheiser  
Kelly Rarey  
Mike Walker  
Chris Wytcherley

C:\Documents and Settings\mike\My Documents\Genealogy\Applegate Trail  
GLO Surveyed Points\IV3 Jumpoff Joe Creek 1\BROCHURE 25B IV Road  
Jumpoff Joe Creek 1 Stree Plug\_IV3 042710.wpd

## Hugo Neighborhood Association & Historical Society's Mission

This information brochure is one of a series of documents published by the Hugo Neighborhood Association & Historical Society (*Hugo Neighborhood*). It is designed to be shared with neighbors for the purpose of helping protect our rural quality of life by promoting an informed citizenry in decision-making. The *Hugo Neighborhood* is an informal nonprofit charitable and educational organization with a land use and history mission of promoting the social welfare of its neighbors.

### Land Use & History

The *Hugo Neighborhood's* land use mission is to promote Oregon Statewide Goal 1 — Citizen Involvement, and to preserve, protect, and enhance the livability and economic viability of its farms, forests, and rural neighbors. It will act, if requested, as a technical resource assisting neighbors to represent themselves.

Its history mission is to educate, collect, preserve, interpret, and research its local history and to encourage public interest in the history of the Hugo area.

Volunteer membership dues are \$10.00 annually per family and normally used for paper, ink, envelopes, publications and mailings.

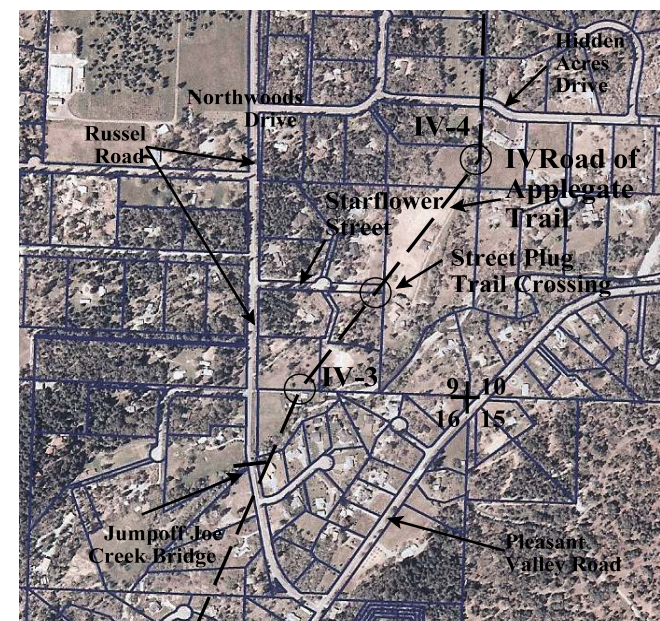
*Hugo Neighborhood*, 3388B Merlin Rd # 195,  
Grants Pass, Oregon 97526, 541-471-8271  
Email: [hugo@jeffnet.org](mailto:hugo@jeffnet.org)  
Web Page: <http://jeffnet.org/~hugo/>

Edited by Jean Boling, Kelly Rarey,  
Karen Rose, and Mike Walker

## IV Road Of Applegate Trail: Jumpoff Joe Creek 1 (IV-3) Street Plug



Brochure 25B of Applegate Trail  
GLO Surveys Brochure Series



April 27, 2010

Hugo Emigrant Trails Committee  
Hugo Neighborhood Association &  
Historical Society  
Josephine County Historical Society