

Illinois Valley (IV) Road Of Applegate Trail (*Trail*): Jumpoff Joe Creek 1 (IV-3)¹

Hugo's IV Road to Illinois Valley via Van Noys Ferry (route of the *Trail*) is located in Josephine County, Oregon from Louse Creek in the south to Widow Niday's place in the north. There are nine GLO surveyed points of interest (POI) along the IV Road in Hugo's area of interest.²

JUMPOFF JOE CREEK 1 POI

Road POI Name Jumpoff Joe Creek 1³ ■ IV-3.
POI ID Code OR-AT-00-35-06-09/16-W-IV-03.

1855 GLO Survey Notes for POI Page 44, Subdivisions Township 35 South of Range 6 West, West on True Line Between Secs 9 & 16.

Chains

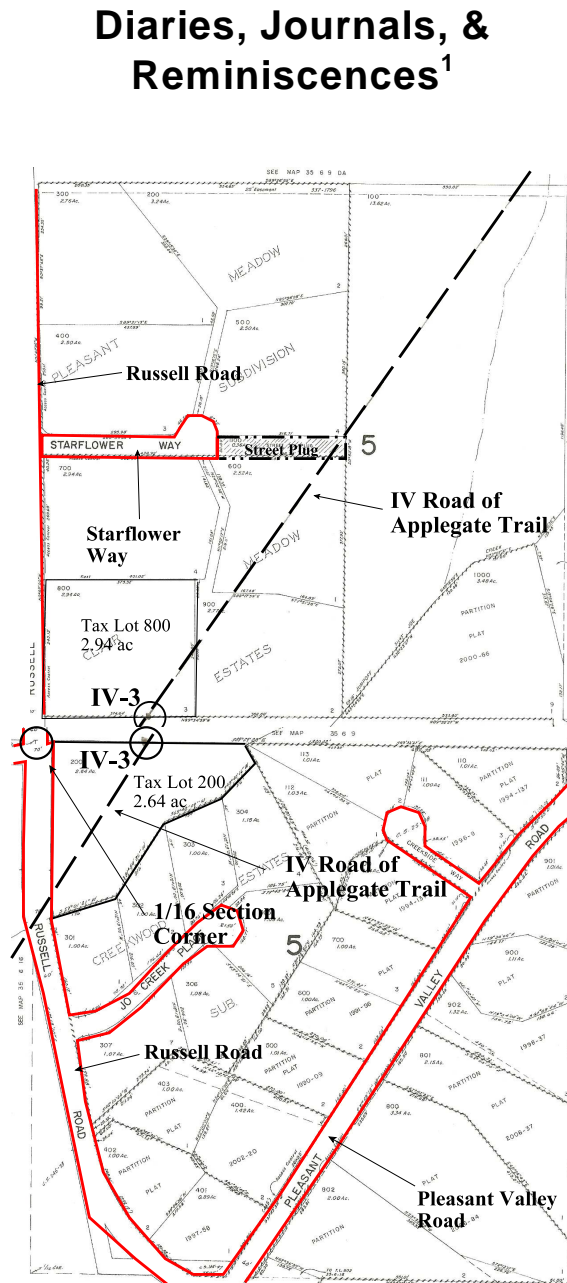
- 10.80 leave Creek [Jumpoff Joe] 45 lks wide c SW [creek is 45 links = 356.4"/12 = 29.7' wide; 10.8 chains = 712.8']
- 15.90 **Road to Illinois Valley** [Illinois Valley Road] c N&S [15.9 chains = 1,049.4'; road is 336.6' from creek]
- 79.85 To Sec Corn [79.85 chains = 5,270.1']

Latitude & Longitude of POI Calculated³

42° 32' 7" North Latitude
 123° 24' 32" West Longitude

POI Located With GPS; Interpretative Sign; Metal Detection Work Not yet; with permission.

1. Hugo Neighborhood. 2009 *Hugo's Applegate Trail GLO Points of Interest*. Brochure 1 in Applegate Trail GLO Surveys Series. Hugo, OR.
 2. Hugo Neighborhood. 2009 *Hugo's Illinois Valley Road Of Applegate Trail Points of Interest*. Brochure 3 in Applegate Trail GLO Surveys Series. Hugo, OR.
 3. 1856 General Land Office Field Survey Sub-Committee, Hugo Emigrant Trails Committee, Hugo Neighborhood Association & Historical Society. February 10, 2006. *General Land Office Field Survey Notes: Hugo's Applegate Trail Segments*. Hugo, OR.



Diaries, Journals, & Reminiscences¹

General Land Office (GLO) Surveys & Maps¹

Bearing & Distance The 1/16 Section Corner is in Russell Road 268' west from IV-3 on section line at white fence 268.125' ($5,270.1 \div 4 = 1,317.525 - 1,049.4' = 268.125'$).



1/16 Section Corner In Russell Road

Private Ownership/Stakeholders IV-3 is located on private property 268' east of 1/16 Section Corner.

1. Gene Amaral
2.94 Acres TL 800, Sec. 9DD, T.35 S., R.6 W., W.M.
2. Eric Vongottsegen
2.64 Acres TL 200, Sec. 16AA, T.35 S., R.6 W., W.M.

OCTA Trail Classification Class ③ or Class ④ Verified Trail.

Be Respectful *Do not trespass. IV-3 is located on private property not open to the public.*

Want more information? Contact a member of the Hugo Emigrant Trails Committee.

Hugo Emigrant Trails Committee

Hugo is blessed with a rich heritage of historic roads, rough though they were. The *Hugo Emigrant Trails Committee* was formed to bring together all those who want to learn more about the early transportation in the area, from the casual admirer to the dedicated researcher. Its aim is to collect and record information about Hugo's emigrant trails, especially its two historic 1850s General Land Office mapped roads, and to share this information (e.g., through *Hugo History Day*, talks, hikes, group visits, training exercises, workshops, publications, web sites, etc.).

Karen Rose, Co-Project Leader
Mike Walker, Co-Project Leader

Diaries, Journals & Reminiscences SubCommittee

Karen Rose
Janet McKay
Kelly & Berneata Rarey
Glen Campbell
Norm Tieman
Joe & Leta Neiderheiser
Kristen Boyce
Kathy Burkey
Penny Shipley
Mike Walker

General Land Office Field Survey SubCommittee

Glen Campbell
Jim & Rene Ford
Joe Neiderheiser
Kelly Rarey
Mike Walker
Chris Wytcherley

Hugo Neighborhood Association & Historical Society's Mission

This information brochure is one of a series of documents published by the Hugo Neighborhood Association & Historical Society (*Hugo Neighborhood*). It is designed to be shared with neighbors for the purpose of helping protect our rural quality of life by promoting an informed citizenry in decision-making. The *Hugo Neighborhood* is an informal nonprofit charitable and educational organization with a land use and history mission of promoting the social welfare of its neighbors.

Land Use & History

The *Hugo Neighborhood's* land use mission is to promote Oregon Statewide Goal 1 — Citizen Involvement, and to preserve, protect, and enhance the livability and economic viability of its farms, forests, and rural neighbors. It will act, if requested, as a technical resource assisting neighbors to represent themselves.

Its history mission is to educate, collect, preserve, interpret, and research its local history and to encourage public interest in the history of the Hugo area.

Volunteer membership dues are \$10.00 annually per family and normally used for paper, ink, envelopes, publications and mailings.

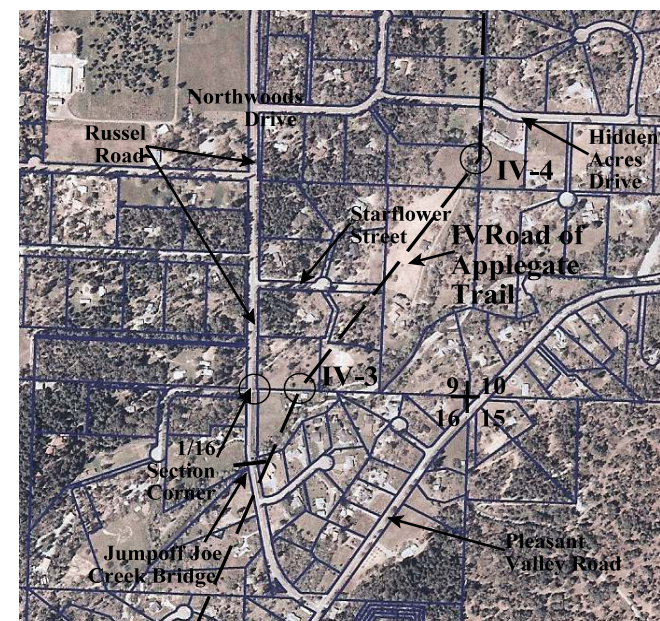
Hugo Neighborhood, 3388B Merlin Rd # 195,
Grants Pass, Oregon 97526, 541-471-8271
Email: hugo@jeffnet.org
Web Page: <http://jeffnet.org/~hugo/>

Edited by Jean Boling, Kelly Rarey,
Karen Rose, and Mike Walker

IV Road Of Applegate Trail: Jumpoff Joe Creek 1 (IV-3)



Brochure 25 of Applegate Trail GLO
Surveys Brochure Series



April 27, 2010

**Hugo Emigrant Trails Committee
Hugo Neighborhood Association &
Historical Society
Josephine County Historical Society**