

## Illinois Valley (IV) Road Of Applegate Trail (*Trail*): Louse Creek Park (IV-1)<sup>1</sup>

Hugo's IV Road to Illinois Valley via Van Noys Ferry (route of the *Trail*) is located in Josephine County, Oregon from Louse Creek in the south to Widow Niday's place in the north. There are nine GLO surveyed points of interest (POI) along the IV Road in Hugo's area of interest.<sup>2</sup>

### LOUSE CREEK PARK POI

Road POI Name Louse Creek Park/Beaver Creek RV Resort<sup>3</sup> ■ IV-1.

POI ID Code OR-AT-00-35-06-21/22-N-IV-01.

### GLO Survey Notes for POI Page 30,

Subdivisions of Township 35 South of Range 6 West, North between sections 21 & 22.

### Chains

20.00 Enter Creek bottom c N70W & S70E  
 22.23 a House [Haines?] bears N52W [308" az]  
 28.00 Road [Illinois Valley Road] c NW & SE [28 chains = 1,848']  
 34.25 to Louse Creek c S80W [34.25 chains = 2,260.5'; creek is 412' north of road ]  
 40.00 Set qu Sec Post [40 chains = 2,640' = ¼ corner; IV-1 is 792' south from ¼ corner]  
 80.20 Sec Post Cor [80.20 chains = 5,293.2']

### Latitude & Longitude of POI Calculated<sup>3</sup>

42° 30' 40.5" North Latitude  
 123° 24' 17.0" West Longitude

POI Located With GPS Not yet; with permission.

1. Hugo Neighborhood. 2009 *Hugo's Applegate Trail GLO Points of Interest*. Brochure 1 in Applegate Trail GLO Surveys Series. Hugo, OR.

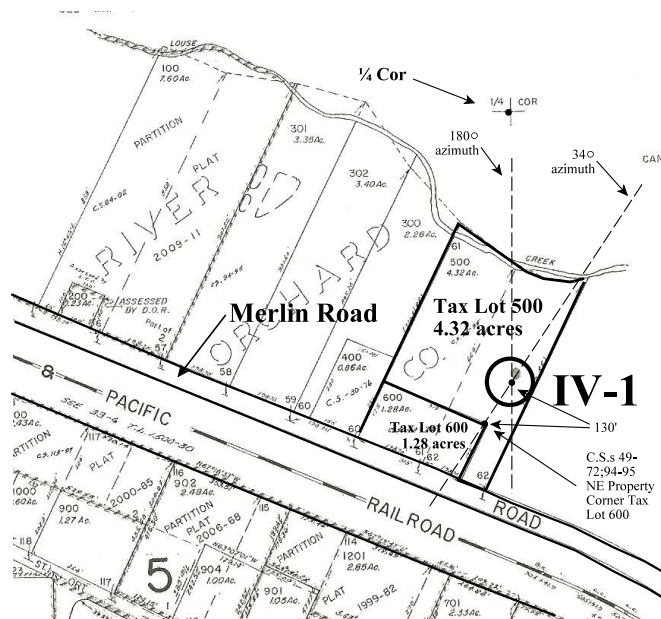
## Diaries, Journals, & Reminiscences<sup>1</sup>

### Diaries, Journals and Reminiscences: 1846<sup>5</sup>

<http://www.jeffnet.org/~hugo/applegat.htm>. Virgil Pringle on IV Road diary notes:

"Saturday, October 17, 1846 – Travel 8 miles, road good and a good camp which is not common, the country being mostly burnt. 8 – 2,218 miles." Travel from camp on north side of Rogue River to camp approximately ½ mile northeast of Jumpoff Joe Creek.

County Surveys (C.S. 49-72 & C.S. 94-95) record monument at NE property corner of Tax Lot 600. It appears the IV Road was very close to the driveway entrance to the Beaver Creek RV Resort.



## General Land Office (GLO) Surveys & Maps<sup>1</sup>

County Survey Bearing & Distance IV-1 was plotted 792' south (180" azimuth) from ¼ corner on Tax Lot 500. IV-1 is 130' 34" azimuth from NE property corner of Tax Lot 600.

Private/Stakeholder Beaver Creek RV Resort

Beaver Creek RV Resort, LCC  
 Tax Lot 500, Section 21D, T.35S., R.6W., W.M.

OCTA Trail Classification Class ③ or Class ④  
 Verified Trail.

Coherence Rule Linear Uniformity. Yes

Corroborative Rule Confirming Evidence. Yes

Collateral Rule Physical/Topo Evidence. Yes/No?

Correlation Rule Overall Agreement. Yes

Interpretative Sign; Metal Detection Work Not yet; with permission.

Be Respectful Do not trespass. IV-1 is located on private property not open to the public.

Want more information? Contact a member of the Hugo Emigrant Trails Committee.

2. Hugo Neighborhood. 2009 *Hugo's Illinois Valley Road Of Applegate Trail Points of Interest*. Brochure 3 in Applegate Trail GLO Surveys Series. Hugo, OR.

3. 1856 General Land Office Field Survey Sub-Committee, Hugo Emigrant Trails Committee, Hugo Neighborhood Association & Historical Society. February 10, 2006. *General Land Office Field Survey Notes: Hugo's Applegate Trail Segments*. Hugo, OR.

## Hugo Emigrant Trails Committee

Hugo is blessed with a rich heritage of historic roads, rough though they were. The *Hugo Emigrant Trails Committee* was formed to bring together all those who want to learn more about the early transportation in the area, from the casual admirer to the dedicated researcher. Its aim is to collect and record information about Hugo's emigrant trails, especially its two historic 1850s General Land Office mapped roads, and to share this information (e.g., through *Hugo History Day*, talks, hikes, group visits, training exercises, workshops, publications, web sites, etc.).

Karen Rose, Co-Project Leader  
Mike Walker, Co-Project Leader

### *Diaries, Journals & Reminiscences SubCommittee*

Karen Rose  
Janet McKay  
Kelly & Berneata Rarey  
Glen Campbell  
Norm Tieman  
Joe & Leta Neiderheiser  
Kristen Boyce  
Kathy Burkey  
Penny Shipley  
Mike Walker

### *General Land Office Field Survey SubCommittee*

Glen Campbell  
Jim & Rene Ford  
Joe Neiderheiser  
Kelly Rarey  
Mike Walker  
Chris Wytcherley

C:\Documents and Settings\mike\My Documents\Genealogy\Applegate Trail  
GLO Surveyed Points\IV1 Louse Creek Park\BROCHURE 23A IV Road  
Louse Creek Park\_IV1 030810.wpd

## Hugo Neighborhood Association & Historical Society's Mission

This information brochure is one of a series of documents published by the Hugo Neighborhood Association & Historical Society (*Hugo Neighborhood*). It is designed to be shared with neighbors for the purpose of helping protect our rural quality of life by promoting an informed citizenry in decision-making. The *Hugo Neighborhood* is an informal nonprofit charitable and educational organization with a land use and history mission of promoting the social welfare of its neighbors.

### Land Use & History

The *Hugo Neighborhood's* land use mission is to promote Oregon Statewide Goal 1 — Citizen Involvement, and to preserve, protect, and enhance the livability and economic viability of its farms, forests, and rural neighbors. It will act, if requested, as a technical resource assisting neighbors to represent themselves.

Its history mission is to educate, collect, preserve, interpret, and research its local history and to encourage public interest in the history of the Hugo area. Volunteer membership dues are \$10.00 annually per family and normally used for paper, ink, envelopes, publications and mailings.

### *Hugo Neighborhood*

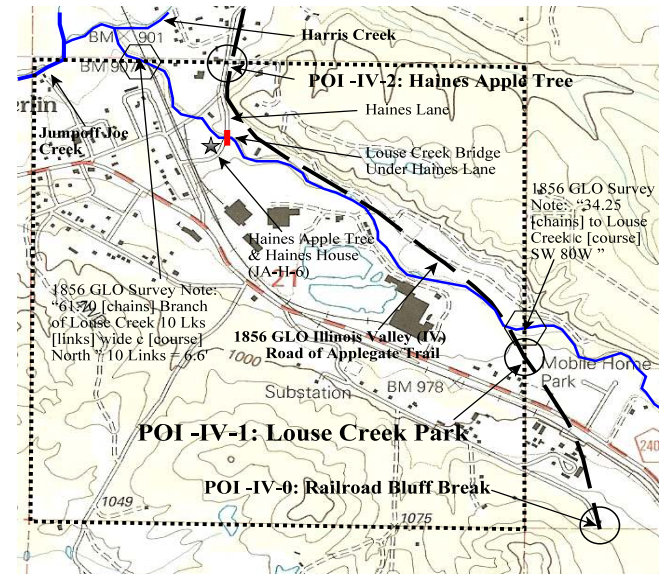
3388B Merlin Rd # 195, Grants Pass, Oregon 97526  
541-471-8271  
Email: [hugo@jeffnet.org](mailto:hugo@jeffnet.org)  
Web Page: <http://jeffnet.org/~hugo/>

Edited by Jean Boling, Kelly Rarey,  
Karen Rose, & Mike Walker

## IV Road Of Applegate Trail: Louse Creek Park/Beaver Creek RV Resort (IV-1)



Brochure 23A of Applegate Trail GLO  
Surveys Brochure Series



1855 IV-1: Louse Creek Park On  
1998 Topographic Map

March 8, 2010

Emigrant Trails Committee  
Hugo Neighborhood Association &  
Historical Society  
Josephine County Historical Society