

Illinois Valley (IV) Road Of Applegate Trail (Trail): Railroad Bluff Break (IV-0)¹

Hugo's IV Road to Illinois Valley via Van Noys Ferry (route of the Trail) is located in Josephine County, Oregon from Louse Creek in the south to Widow Niday's place in the north. There are nine GLO surveyed points of interest (POI) along the IV Road in Hugo's area of interest.²

RAILROAD BLUFF BREAK POI

Road POI Name Railroad Bluff Break³ ■ IV-0

POI ID Code OR-AT-00-35-06-22/27-W-IV-00

GLO Survey Notes for POI Page 29: Subdivision Lines of Township N_o 35 South of Range N_o 6 West; West on True Line Between Secs 22 & 27.

Chains

54.00 Louse Creek Bottom

69.50 Road to Van Noys Ferry c N & S
[69.5 chains = 4,587 feet]

80.04 to Sec Corn [80.04 chains = 5,282.64 feet]

Latitude & Longitude of POI Calculated³

?? North Latitude

?? West Longitude

POI Located With GPS Not yet; with permission.

1. Hugo Neighborhood. 2009 *Hugo's Applegate Trail GLO Points of Interest*. Brochure 1 in Applegate Trail GLO Surveys Series. Hugo, OR.
2. Hugo Neighborhood. 2009 *Hugo's Illinois Valley Road Of Applegate Trail Points of Interest*. Brochure 3 in Applegate Trail GLO Surveys Series. Hugo, OR.

3. 1856 General Land Office Field Survey Sub-Committee, Hugo Emigrant Trails Committee, Hugo Neighborhood Association & Historical Society. February 10, 2006. *General Land Office Field Survey Notes: Hugo's Applegate Trail Segments*. Hugo, OR.

Diaries, Journals, & Reminiscences¹

Diaries, Journals and Reminiscences: 1846⁵

<http://www.jeffnet.org/~hugo/applegat.htm>. Virgil Pringle on IV Road diary notes:

"Saturday, October 17, 1846 – Travel 8 miles, road good and a good camp which is not common, the country being mostly burnt. 8 – 2,218 miles."

Travel was from a camp on the north side of Rogue River to a camp approximately ½ mile northeast of Jumpoff Joe Creek (i.e., the 160-acre Crockett homestead Patent No. 702 dated August 15, 1876).

IV-0 Stakeholder Dwight & Myrna Melson (private)
4.62 Acre TL 1200, Section 22C, T.35 S., R.6 W, W.M.

IV-0 Stakeholder City of Grants Pass (public)
308.82 Acre TL 400, Section 27, T.35 S., R.6 W, W.M.

Terry Haugen, Director, Public Works
City of Grants Pass
101 NW "A" Street
Grants Pass, Oregon 97526
541-471-2650

OCTA Trail Classification Class ③ or Class ④
Verified Trail.

Coherence Rule Linear Uniformity. Yes

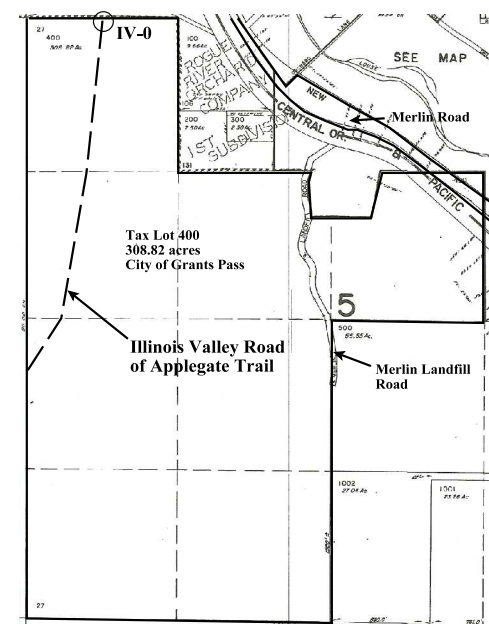
Corroborative Rule Confirming Evidence. Yes

Collateral Rule Physical/Topo Evidence. Yes/No?

Correlation Rule Overall Agreement. Yes

4. Hugo Neighborhood. 2009 *Hugo's Illinois Valley Road Of Applegate Trail Points of Interest*. Brochure 3 in Applegate Trail GLO Surveys Series. Hugo, OR.

General Land Office (GLO) Surveys & Maps¹



Tax Lot 400 & Applegate Trail
2009 Josephine County Assessor Map

Tax Lot 400 The south boundary of IV-0 is the north boundary of Tax Lot 400 which is administered by the City of Grants Pass. This includes 200 acres from BLM in 1997 (Recreation and Public Purposes Act OR 651).

Interpretative Sign; Metal Detection Work Not yet; with permission.

Be Respectful *Do not trespass. North IV-0 is located on private property not open to the public.*

Want more information? Contact a member of the Hugo Emigrant Trails Committee.

Hugo Emigrant Trails Committee

Hugo is blessed with a rich heritage of historic roads, rough though they were. The *Hugo Emigrant Trails Committee* was formed to bring together all those who want to learn more about the early transportation in the area, from the casual admirer to the dedicated researcher. Its aim is to collect and record information about Hugo's emigrant trails, especially its two historic 1850s General Land Office mapped roads, and to share this information (e.g., through *Hugo History Day*, talks, hikes, group visits, training exercises, workshops, publications, web sites, etc.).

Karen Rose, Co-Project Leader
Mike Walker, Co-Project Leader

Diaries, Journals & Reminiscences SubCommittee

Karen Rose
Janet McKy
Kelly & Berneata Rarey
Glen Campbell
Norm Tieman
Joe & Leta Neiderheiser
Kristen Boyce
Kathy Burkey
Penny Shipley
Mike Walker

General Land Office Field Survey SubCommittee

Glen Campbell
Jim & Rene Ford
Joe Neiderheiser
Kelly Rarey
Mike Walker
Chris Wytcherley

Hugo Neighborhood Association & Historical Society's Mission

This information brochure is one of a series of documents published by the Hugo Neighborhood Association & Historical Society (*Hugo Neighborhood*). It is designed to be shared with neighbors for the purpose of helping protect our rural quality of life by promoting an informed citizenry in decision-making. The *Hugo Neighborhood* is an informal nonprofit charitable and educational organization with a land use and history mission of promoting the social welfare of its neighbors.

Land Use & History

The *Hugo Neighborhood's* land use mission is to promote Oregon Statewide Goal 1 — Citizen Involvement, and to preserve, protect, and enhance the livability and economic viability of its farms, forests, and rural neighbors. It will act, if requested, as a technical resource assisting neighbors to represent themselves.

Its history mission is to educate, collect, preserve, interpret, and research its local history and to encourage public interest in the history of the Hugo area. Volunteer membership dues are \$10.00 annually per family and normally used for paper, ink, envelopes, publications and mailings.

Hugo Neighborhood

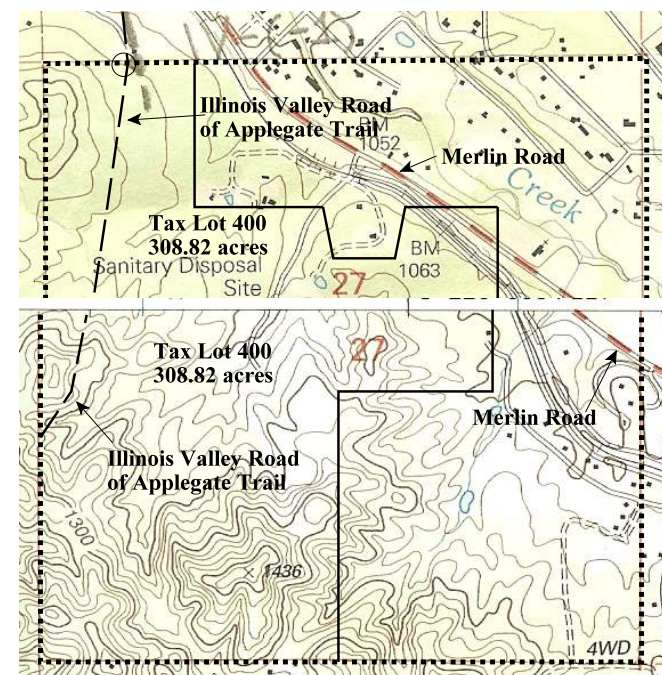
3388B Merlin Rd # 195, Grants Pass, Oregon 97526
541-471-8271
Email: hugo@jeffnet.org
Web Page: <http://jeffnet.org/~hugo/>

Edited by Jean Boling, Kelly Rarey,
Karen Rose, & Mike Walker

IV Road Of Applegate Trail: Railroad Bluff Break (IV-0)



Brochure 22 of Applegate Trail GLO
Surveys Brochure Series



March 8, 2010

**Hugo Emigrant Trails Committee
Hugo Neighborhood Association &
Historical Society
Josephine County Historical Society**