

Illinois Valley (IV) Road Of Applegate Trail IV Ford No. 9: 1846¹

1846 Applegate Wagon Trains Insignificant IV Ford No. 9 (Corliss Creek Ford) is not identified on the 1855 GLO survey notes nor the 1856 GLO map.²⁻⁴ (<http://www.jeffnet.org/~hugo/applegat.htm>)

1855 GLO Survey Notes for one mile section line west between Section 3 and Section 34 identify one topographic feature of interest: “20.50 [chains] Branch [Corliss Creek] 5 lks [links] wide c [course] SE” 20.50 chains = 1,353 feet; 5 Links = 3.3 feet.

Diaries, Journals and Reminiscences: 1846⁵ <http://www.jeffnet.org/~hugo/applegat.htm>. The minor Corliss Creek Ford II was not significant enough to mention in any diary.

Dickerson’s Corner is the NE forty acres of Section 3, T.35S. R.6W. According to the 1856 GLO map the IV Road of the Applegate Trail was located approximately in the eastern half of the forty. Two survey points along section lines, IV-6 and IV-7, competently locate the 1855 IV Road just north of the junction of present Three Pines Road and Ox Yoke Road. The location of the IV Road in the interior of Section 3, including the main pasture at Dickerson’s Corner, are assumptions used by the GLO map makers and the Hugo Emigrant Trails Committee.

Working Hypothesis For Locating Trail Sites Between POIs The *Trail* in the Hugo region was restricted by the complex mountain-valley structure of the region. A working hypothesis is that, except when traversing mountains and ridges, the *Trail* was located in the narrow valleys which in 1846 - 1855 were generally open woodlands and prairies located next to trees clustered along streams.⁶

1846 Corliss Creek Ford II

Wagon Ruts at Dickerson’s Corner⁷ In the 1950s and 1960s a wagon trail (ruts) used to be visible in what the Dickerson family called their middle pasture (in the scattered pine trees along and west of Corliss Creek) where the Dickersons, ran their cattle all winter long. One set of ruts was on both sides of what is today a large Ponderosa Pine. One year this pasture was tilled and then the ruts were gone, but still visible by the cabin.

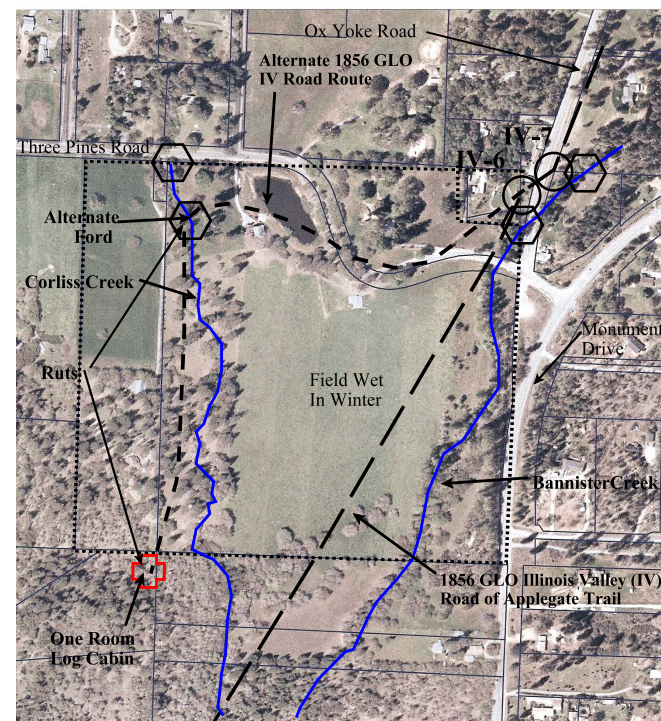
Traveling in a northerly direction the wagon ruts started at the cabin to approximately the SW corner of Dickerson’s Corner. They are located on the west side of Corliss Creek until a point north is reached approximately 200’ south of Three Pines Road where the ruts location turned eastward toward the middle of Dickerson’s pond.

Evolved IV Trail West Of Corliss Creek The wagon ruts were an evolution to the IV trail which became a year around trail by 1855. The trail would have been relocated out of the wet winter main pasture to the base of slopes to the west and north.

Merlin Quadrangle: 1998 The IV Ford No. 9: Corliss Creek Ford II is part of the little north-south valley created by Corliss and Bannister creeks.⁸

1. Hugo Neighborhood Association & Historical Society and Sexton Enterprises. September 2009. *Hugo’s Regional Applegate Trail Fords*. Hugo, OR.
2. General Surveyor Office of Oregon. Subdivision Lines For 1856 Map (T.35., R. 6. W., Willamette Meridian). Field Notes. Surveyor Luke G Hyde. Contract February 19, 1855; Surveyed March 31, 1856; Hugo Neighborhood. 2006. *Hugo’s Applegate Trail Field Notes*. Brochures 10A - 10D in Emigrant Trail Series. Hugo, OR.
3. General Land Office Field Survey Sub-Committee, *Hugo’s Emigrant Trails Committee*, Hugo Neighborhood Association & Historical Society. 2007. *Hugo Emigrant Trail USGS Quads*. Brochure 5A in Emigrant Trails Series. Hugo, OR.
4. General Land Office Field Survey Sub-Committee, *Hugo’s Emigrant Trails Committee*, Hugo Neighborhood Association & Historical Society. 2007. *Hugo Emigrant GLO Maps & Field Survey Notes*. Brochure 5B in Emigrant Trails Series. Hugo, OR.

General Land Office (GLO) Surveys & Maps



Alternate IV Routes on 2002 Aerial Photo

Want more information? Contact a member of the Hugo Emigrant Trails Committee.

5. Rose, Karen. 2006. Hugo Emigrant Trails Committee, Hugo Neighborhood Association & Historical Society. *Hugo’s Applegate Trail Diaries, Journals & Reminiscences Project*. “Yellow Book Project” For Participants of the Diaries, Journals and Reminiscences Sub-Committee. Hugo, OR; Hugo Neighborhood. 2005 *Diaries & Journals*. Brochure 11 in Emigrant Trail Series. Hugo, OR; Hugo Neighborhood. 2006 *Diaries, Journals & Reminiscences Sub-Committee*. Brochure 11B in Emigrant Trail Series. Hugo, OR.
6. Hugo Neighborhood. January 10, 2010. *Applegate Trail’s Open Valleys & Wagon Routes In Hugo Region: 1846 - 1855* Brochure 4B of Trail Brochure Series. Hugo, OR.
7. Walker, Mike. September 28, 2009. Interview of Charlyn Dickerson Witcher. Hugo, OR
8. USGS. 1996. *Merlin Quadrangle*. 7.5 minute topographic series, scale 1:24,000, and contour interval 40 feet.

Hugo Neighborhood Association & Historical Society's Mission

This information brochure is one of a series of documents published by the Hugo Neighborhood Association & Historical Society (*Hugo Neighborhood*). It is designed to be shared with neighbors for the purpose of helping protect our rural quality of life by promoting an informed citizenry in decision-making. The *Hugo Neighborhood* is an informal nonprofit charitable and educational organization with a land use and history mission of promoting the social welfare of its neighbors.

Land Use & History

The *Hugo Neighborhood's* land use mission is to promote Oregon Statewide Goal 1 — Citizen Involvement, and to preserve, protect, and enhance the livability and economic viability of its farms, forests, and rural neighbors. It will act, if requested, as a technical resource assisting neighbors to represent themselves.

Its history mission is to educate, collect, preserve, interpret, and research its local history and to encourage public interest in the history of the Hugo area.

Volunteer membership dues are \$10.00 annually per family and normally used for paper, ink, envelopes, publications and mailings. Send us your e-mail address if you want to know what we are doing.

Email: hugo@jeffnet.org
Web Page: <http://jeffnet.org/~hugo/>
Edited by Karen Rose & Mike Walker

Hugo Neighborhood Officers

Hal Anthony, Outreach Chair
3995 Russell Road
Grants Pass, Oregon 97526

Wayne McKy, Chair
6497 Hugo Road
Grants Pass, Oregon 97526

Mike Walker, Education Chair
3388B Merlin Rd #195
Grants Pass, Oregon 97526

Standing Committees

Jean Boling, Chair, Pleasant Valley Cemetery
Committee; Co-Chair, Pioneers Committee

Mike Brassill, Chair, Wildflower Committee

Wayne McKy, Co-Chair, Hazardous Fuels
Committee; Chair, Orchard Committee;
Chair, Farm & Forest Committee

Karen Rose, Web Master; News Letter Editor
Hugo Whistle Stop; Co-Chair, Hugo Emigrant Trails
Committee; Chair, Native Americans Committee

Jon Whalen, Story Teller; Chair
Metal Detection Committee

Mike Walker, Co-Chair, Hugo Emigrant Trails
Committee; Co-Chair, Hazardous Fuels Committee;
Chair, National Historic Register Committee;
Co-Chair, Pioneers Committee

Tom Walker, Chair, Hugo Sign Committee

Brochure 20 of Applegate Trail Fords Series - HNA&HS 2009 -31
C:\Documents and Settings\mike\My Documents\Genealogy\Applegate Trail
Fords\Brochure 21 IV Ford No 9 Corliss Creek II\BROCHURE 21 IV Ford
No 9 Corliss Creek Ford_100109.wpd

IV Ford No. 9: Corliss Creek Ford II

Brochure 20 of Applegate Trail Fords
Brochure Series



*1950s - 1960s Wagon Ruts Were on Both Sides of
Middle Ponderosa Pine*

October 1, 2009

Hugo Neighborhood Association &
Historical Society