

## Jacksonville Road (JR) Of Applegate Trail (Trail): Old Stage Road (JA-16)<sup>1</sup>

**Hugo's Jacksonville Road (JA) from Willamette Valley to Jacksonville** (route of the Applegate Trail) is located in Josephine County, Oregon from Louse Creek in the south to Grave Creek in the north. There are 17 GLO surveyed points of interest (POI) along the JR in Hugo's area of interest.<sup>2</sup>

### OLD STAGE ROAD

**POI Name** Old Stage Road<sup>3</sup> ■ JA-16.

**POI ID Code** OR-AT-00-34-06-11/14-W-JA-16.

**1855 GLO Survey Notes for POI** Page 605.

Subdivisions of T. 34 S., R. 6 W. 89.46 W [West] on True Line between sections 11 & 14.

### Chains

72.00 a Road c N30°W & S30°E  
[72 chains = 4,752']

77.50 Branch 7 Lks wide c. N20°W [77.50 chains = 5,115' - Rat Creek is 363' from Trail; Rat Creek is 7 links = 55.44" wide]

80.04 To Section Corner [80.04 chains = 5,282.64' - 4,752 = JA-16 is 530.64' from corner]

**Latitude & Longitude POI Calculated<sup>3</sup>**

42° 37' 23.0" North Latitude  
123° 23' 01.0" West Longitude

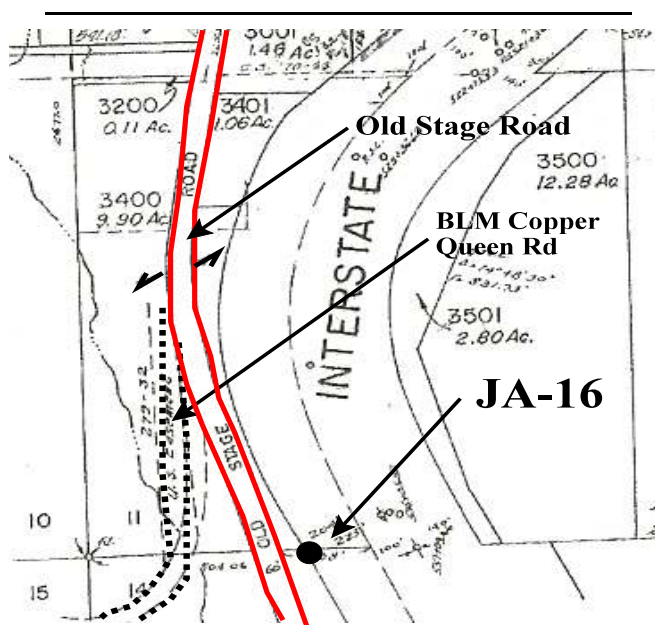
**POI Located With GPS/C.S./Interpretative Sign**

Yes: March 18, 2010. JA-16 is south of Copper Queen Mine Road junction (BLM Rd No. 34-6-11.1) with Old Stage Road, and 47.9' east of the Old Stage Road center line (i.e., 60' right-of-way (ROW)).

1. Hugo Neighborhood. 2009 *Hugo's Applegate Trail GLO Points of Interest*. Brochure 1 in Applegate Trail GLO Surveys Series. Hugo, OR.

## Diaries, Journals, & Reminiscences<sup>1</sup>

**Public** The NE private property corner of Josephine C.S. 207-69 records the I-5 ROW boundary to be 527.9' from the section corner. JA-16 is 2.74' within the I-5 ROW (i.e., fence is approximately 6 inches east of boundary). The C.S. records Oregon State Highway Department monument (P.O.T. 536+10.12) to be 21.6' south of the section line.



Tax Lot 3400, Section 11 & I-5 ROW

2. Hugo Neighborhood. 2009 *Hugo's Jacksonville Road Of Applegate Trail Points of Interest*. Brochure 2 in Applegate Trail GLO Surveys Series. Hugo, OR.  
3. 1856 General Land Office Field Survey Subcommittee, Hugo Emigrant Trails Committee, Hugo Neighborhood Association & Historical Society. February 10, 2006. *General Land Office Field Survey Notes: Hugo's Applegate Trail Segments*. Hugo, OR.  
4. Oregon-California Trails Association (OCTA). July 2002, Mapping Emigrant Trails MET Manual. Fourth Edition. Independence, MO.

## General Land Office (GLO) & Josephine County Surveys (C.S.) & Maps<sup>1</sup>

**Old Stage Road** is the evolution of the stage road in operation from 1860 through 1883 until the railroad arrived.

**Stakeholders**

1. Oregon Highway Commission.
2. Cora Lynn Cordial (private property to NW) 9.90 Ac TL 3400, Section 11, T.34S., R.6W., W.M.
3. Donald Max (private property to SW) 1.99 Ac TL 300, Section 14, T.34S., R.6W., W.M.

**OCTA Trail Classification** Class ③ Verified Trail, or Class ④ Altered and Verified Trail.<sup>4</sup>

**Coherence Rule** Linear Uniformity. Yes

**Corroborative Rule** Confirming Evidence. Yes

**Collateral Rule** Physical/Topo Evidence. Yes/No?

**Correlation Rule** Overall Agreement. Yes

### Be Respectful

*Do not trespass. JA-16 is located on public property accessed through the I-5 ROW, but next to private property not open to the public.*

**More Information** Contact a member of the Hugo Emigrant Trails Committee.



Jim & Rene Ford, Kelly Rarey, & Glen Campbell

## Hugo Emigrant Trails Committee

Hugo is blessed with a rich heritage of historic roads, rough though they were. The *Hugo Emigrant Trails Committee* was formed to bring together all those who want to learn more about the early transportation in the area, from the casual admirer to the dedicated researcher. Its aim is to collect and record information about Hugo's emigrant trails, especially its two historic 1850s General Land Office mapped roads of the Applegate Trail, and to share this information (e.g., through *Hugo History Day*, talks, hikes, group visits, training exercises, workshops, publications, web sites, etc.).

Karen Rose, Co-Project Leader  
Mike Walker, Co-Project Leader

### *Diaries, Journals & Reminiscences SubCommittee*

Karen Rose  
Janet McKy  
Kelly & Berneata Rarey  
Glen Campbell  
Norm Tieman  
Joe & Leta Neiderheiser  
Kristen Boyce  
Kathy Burkey  
Penny Shipley  
Mike Walker

### *General Land Office Field Survey SubCommittee*

Glen Campbell  
Jim & Rene Ford  
Joe Neiderheiser  
Kelly Rarey  
Mike Walker  
Chris Wytcherley

## Hugo Neighborhood Association & Historical Society's Mission

This information brochure is one of a series of documents published by the Hugo Neighborhood Association & Historical Society (*Hugo Neighborhood*). It is designed to be shared with neighbors for the purpose of helping protect our rural quality of life by promoting an informed citizenry in decision-making. The *Hugo Neighborhood* is an informal nonprofit charitable and educational organization with a land use and history mission of promoting the social welfare of its neighbors.

### Land Use & History

The *Hugo Neighborhood's* land use mission is to promote Oregon Statewide Goal 1 — Citizen Involvement, and to preserve, protect, and enhance the livability and economic viability of its farms, forests, and rural neighbors. It will act, if requested, as a technical resource assisting neighbors to represent themselves.

Its history mission is to educate, collect, preserve, interpret, and research its local history and to encourage public interest in the history of the Hugo area.

Volunteer membership dues are \$10.00 annually per family and normally used for paper, ink, envelopes, publications and mailings.

### *Hugo Neighborhood*

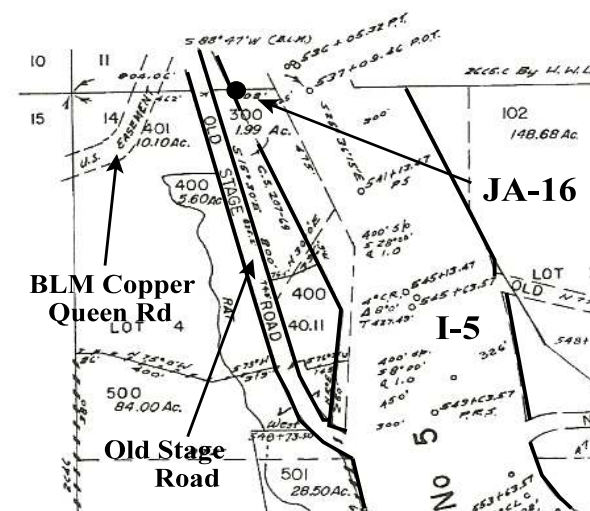
3388B Merlin Rd # 195, Grants Pass, Oregon 97526  
541-471-8271  
Email: hugo@jeffnet.org

Edited by Jean Boling, Glen Campbell, Jim & Rene Ford, Joe Neiderheiser, Kelly Rarey, Mike Walker, & Chris Wytcherley

## JR Of Applegate Trail: Old Stage Road (JA-16)



Brochure 20 of Applegate Trail  
GLO Surveys Brochure Series



Tax Lot 300, Section 14 & I-5 ROW,

April 1, 2010

**Hugo Emigrant Trails Committee  
Hugo Neighborhood Association &  
Historical Society  
Josephine County Historical Society**