

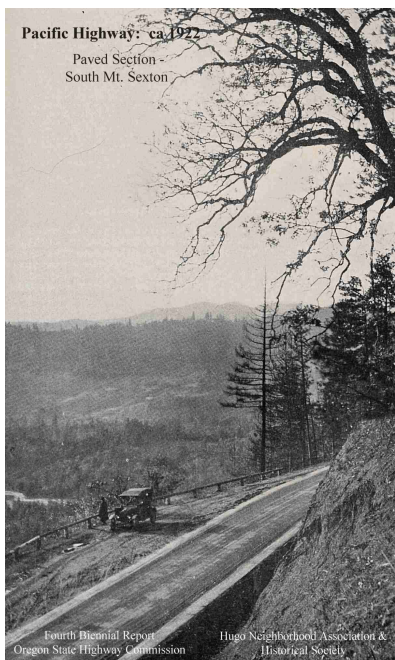
## Pacific Highway: 1913 - 1926<sup>1</sup>

**Evolving Transportation Systems** There were several land transportation systems before and after the official Pacific Highway from 1913 to 1926 in southwestern Oregon: from Indian trails to pioneer trails and wagon roads following water courses, and during the auto age from dirt and granite roads to narrow paved roads, and finally the four lane, and larger, interstate 5 (I-5) freeway.

**Pacific Highway: 1913 - 1926** The 345 mile Oregon highway in 1922 was paved or under contract for paving. The completion of this highway in 1922 gave Oregon the distinction of being the first state west of the Mississippi to have a paved highway the entire length of the state. The Pacific Highway was officially dedicated the length of Oregon and Washington October 1923.

The Pacific Highway became U.S. 99 in 1926.

*Pacific Highway South Mt. Sexton: 1922*



## Hugo's Regional Auto Camps<sup>1</sup>

Fragments of the "official" Pacific Highway are plentiful in Northern Josephine County. These fragments are left-overs not buried beneath later versions of the highway. They are survivors of the grade and pave troops and had been abandoned, reclaimed, and/or renamed.

### Historic Auto Camps/Court & Service Stations

There were over a dozen old Pacific Highway auto camps/courts and gas stations from Merlin Hill to Grave Creek.

- 1.A. Hugo's Regional Auto Camps/Courts & Gas Stations: 1910 - 1960s
- 1.B. Pacific Highway Oxyoke Road Triangular Concrete Milepost No. 268: ca., 1924
- 1.C. Naming of Monument Drive: 1960
- 1.D. Pacific Highway: 1913 - 1926
- 1.E. U.S. 99: 1926 - 1959
- 1.F. Interstate Highway 5 (I-5): 1958 - 2010
- 1.G. Newman & Heater Perished At Windy Gap On U.S. 99: 1948
- 1.H. Grave Creek Crossing & Covered Bridge: 1846 - 2010
- 2.A. Shady Rest Auto Court/Shady Rest Motor Court
- 3.A. Scotty's Texaco
- 4.A. Willow Springs Gas Station
- 5.A. Camp Joy/Keith's Auto Court
- 6.A. Spokane Auto Court
- 7.A. Hamilton's One Stop
- 8.A. Traveler Auto Court
- 9.A. Antler's Service Station: 1987 - 1992
- 9.B. Antler's Service Station: 1976 - 1987
- 9.C. Pleasant Valley Auto Camp/Court: ca., 1920s - 1940s
- 10.A. Wildwood Service Station And Auto Court/Wildwood Auto Court
- 11.A. Oxyoke Service Station
- 12.A. Hick's Auto Camp
- 12.B. Court Conway
- 13.A. Mt. Sexton Auto Court
- 14.A. Mt. Sexton Summit Motor Court
- 15.A. Leidecker Fish Farm/Tourist Camp
- 16.A. Radio Park Auto Camp

## Merlin Hill to Mt. Sexton

By the late 1910s there was a change in how the remote mountains of Oregon were perceived. Instead of being viewed as obstructions that stood in the way of their ultimate destinations, say to a fishing stream, travelers now saw isolated mountain areas as escapes from their urban surroundings. Nature, therefore, became a diversion from everyday life that provided an uplifting experience.



**1920s** In 1921 Oregon stood near the head of the list in the proportion of automobiles to the population. For every 6.76 residents of the state one car was registered, Oregon being seventh on the list. There is one car for every 10.2 persons in the United States, Iowa heading the list with 5.38 and Alabama bring up the rear with 29.5. Oregon Seventh In Ratio Of Cars, State Has One Machine For Every 6.76 Persons. *Grants Pass Daily Courier*, Saturday, April 1, 1922.

By the late 1920s visitors took the opportunity to learn about the animal and plant life found in the mountains as well as topics such as geology, paleontology and ecology. These motorists grew to appreciate the mountains for their unique beauty and abundance of wildlife.

**Want more information?** Contact an officer of the *Hugo Neighborhood*.

1. Hugo Neighborhood Association & Historical Society. March 2006. *Auto Camps In Northern Josephine County: 1910 - 2001*. Hugo, OR.

## Hugo Neighborhood Association & Historical Society's Mission

This information brochure is one of a series of documents published by the Hugo Neighborhood Association & Historical Society (*Hugo Neighborhood*). It is designed to be shared with neighbors for the purpose of helping protect our rural quality of life by promoting an informed citizenry in decision-making. The *Hugo Neighborhood* is an informal nonprofit charitable and educational organization with a land use and history mission of promoting the social welfare of its neighbors.

### Land Use & History

The *Hugo Neighborhood's* land use mission is to promote Oregon Statewide Goal 1 — Citizen Involvement, and to preserve, protect, and enhance the livability and economic viability of its farms, forests, and rural neighbors. It will act, if requested, as a technical resource assisting neighbors to represent themselves.

Its history mission is to educate, collect, preserve, interpret, and research its local history and to encourage public interest in the history of the Hugo area.

Volunteer membership dues are \$10.00 annually per family and normally used for paper, ink, envelopes, publications and mailings. Send us your e-mail address if you want to know what we are doing.

Email: [hugo@jeffnet.org](mailto:hugo@jeffnet.org)  
 Web Page: <http://jeffnet.org/~hugo/>  
 Edited by Dick Malish, Karen Rose & Mike Walker

## Hugo Neighborhood Officers

Hal Anthony, Outreach Chair  
 3995 Russell Road  
 Grants Pass, Oregon 97526

Wayne McKy, Chair  
 6497 Hugo Road  
 Grants Pass, Oregon 97526

Mike Walker, Education Chair  
 3388B Merlin Rd #195  
 Grants Pass, Oregon 97526

## Standing Committees

Historical Documents Editing Committee  
 Jacque Hardwick, Chair; Jean Boling, Karen Rose;  
 Wayne & Janet McKy; Mike Walker

Jean Boling, Chair, Pleasant Valley Cemetery Committee;  
 Co-Chair, Pioneers Committee

Mike Brassill, Chair, Wildflower Committee

Wayne McKy, Co-Chair, Hazardous Fuels Committee;  
 Chair, Orchard Committee;  
 Chair, Farm & Forest Committee

Karen Rose, Web Master; News Letter Editor  
*Hugo Whistle Stop*; Co-Chair, Hugo Emigrant Trails  
 Committee; Chair, Native Americans Committee

Jon Whalen, Story Teller; Chair  
 Metal Detection Committee

Mike Walker, Co-Chair, Hugo Emigrant Trails Committee;  
 Co-Chair, Hazardous Fuels Committee; Chair, National  
 Historic Register Committee;  
 Co-Chair, Pioneers Committee

Tom Walker, Chair, Hugo Sign Committee

Brochure A of Auto Camp Series - HNA&HS 2009 -41  
 C:\Documents and Settings\mike\My Documents\Genealogy\Auto\_Camps\1  
 Regional\BROCHURE 1A Hugo Regional Auto Camps\_050710.wpd

## Hugo's Regional Auto Camps/Courts & Gas Stations: 1910 - 1960s

Brochure 1A of Hugo's Auto Camp  
 Brochure Series



Welcome To Oregon Sign For Motorists 7 Miles From  
 Portland: ca., late 1910s

June 2, 2010

Hugo Neighborhood Association &  
 Historical Society