

Jacksonville Road (JR) Of Applegate Trail (Trail): South Rat Creek (JA-15)¹

Hugo's Jacksonville Road (JA) from Willamette Valley to Jacksonville (Trail) is located in Josephine County, Oregon from Louse Creek in the south to Grave Creek in the north. There are 17 GLO surveyed points of interest (POI) along the JR in Hugo's area of interest.²

SOUTH RAT CREEK POI

Road POI Name South Rat Creek³ ■ JA-15.
POI ID Code OR-AT-00-34-06-14/23-E-JA-15.

GLO Survey Notes for POI Pages 462 - 463.
Subdivisions of T. 34 S., R. 6 W. - Thence I run N89°13'E. [East] on a true line bet [between] Secs [sections] 14 & 23 Var 19°E at 9 a.m.

Chains

11.70 A Stream 3 lks. wide course North, ascend + 250? [11.70 chains = 772.2'; 3 links = 23.76"]

13.10 Grants Pass and Canyonville Roads course N. and S. (13.1 chains = 864.6'; Rat Creek was 92.4' from road]

79.96 Corner at Sections 13, 14, 23, & 24 [79.96 chains = 5,277.36']

Latitude & Longitude of POI Calculated³

42° 36' 30.25" North Latitude
123° 22' 55.60" West Longitude

POI Located With GPS 2005/2010 in I-5 ROW.

Interpretative Sign Staked February 5, 2010, bearing and distance (92.4' on section line from Rat Creek). K-Tag and monument on section line. Traces north from JA-15.

Diaries, Journals, & Reminiscences¹

Diaries, Journals and Reminiscences: 1846 - 1847⁵
<http://www.jeffnet.org/~hugo/applegat.htm>

Virgil Pringle on IV Road: "Sunday, October 18, 1846 - Have some bad road that takes till after dark to go 6 miles. 6 mile." Just north of Jumpoff Joe Creek to north side of Grave Creek Hills.

1847 - Lester Hulin on JR: "W. 20th Upon leaving camp we soon came to a fine creek. Then bad roads ensued



GLO Subcommittee Members At JA-15 South Rat Creek

(rough hill and sideling) but by night we were in a valley with good camping ground at hand. Distance 8 Ms." Fine creek was Jumpoff Joe Creek; good camping was Grave Creek.

Patent On September 16, 1896 John S. W. Smith was issued a home-stead patent for 160 acres in Hugo, Oregon (Patent No. 3749) squarely at the Mt. Sexton summit. JA-15 is

approximately 865 feet north of the homestead's northern boundary.

Postal Telegraph Line Degraded cross member of old postal telegraph line found along ROW of site.

General Land Office (GLO) Surveys & Maps¹

Public Ownership JA-15 is located on public land within the I-5 right-of-way (Oregon Highway Commission). It might be adversely impacted by the widening of I-5.

SHPO March 22, 2005 Case # 05-0699 for *Trail* segment at Mt. Sexton Pass.

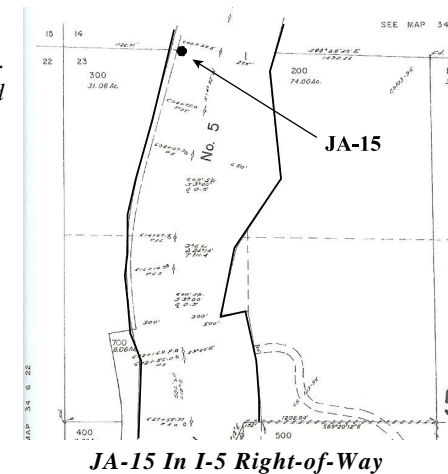
Metal Detection Work Not yet.

OCTA Trail Classification Class ③ or Class ④
Verified Trail.

Coherence Rule Linear Uniformity. Yes
Corroborative Rule Confirming Evidence. Yes
Collateral Rule Physical/Topo Evidence. Yes
Correlation Rule Overall Agreement. Yes

Be Respectful
Do not trespass. JA-15 is located on publicly administered lands.

Want more information?
Contact a member of the Hugo Emigrant Trails Committee.



1. Hugo Neighborhood. 2009 *Hugo's Applegate Trail GLO Points of Interest*. Brochure 1 in Applegate Trail GLO Surveys Series. Hugo, OR.
2. Hugo Neighborhood. 2009 *Hugo's Jacksonville Road Of Applegate Trail Points of Interest*. Brochure 2 in Applegate Trail GLO Surveys Series. Hugo, OR.
3. 1856 General Land Office Field Survey Sub-Committee. Hugo Emigrant Trails Committee, Hugo Neighborhood Association & Historical Society. February 10, 2006. *General Land Office Field Survey Notes: Hugo's Applegate Trail Segments*. Hugo, OR.

Hugo Emigrant Trails Committee

Hugo is blessed with a rich heritage of historic roads, rough though they were. The *Hugo Emigrant Trails Committee* was formed to bring together all those who want to learn more about the early transportation in the area, from the casual admirer to the dedicated researcher. Its aim is to collect and record information about Hugo's emigrant trails, especially its two historic 1850s General Land Office mapped roads of the Applegate Trail, and to share this information (e.g., through *Hugo History Day*, talks, hikes, group visits, training exercises, workshops, publications, web sites, etc.).

Karen Rose, Co-Project Leader
Mike Walker, Co-Project Leader

Diaries, Journals & Reminiscences SubCommittee

Karen Rose
Janet McKy
Kelly & Berneata Rarey
Glen Campbell
Norm Tieman
Joe & Leta Neiderheiser
Kristen Boyce
Kathy Burkey
Penny Shipley
Mike Walker

General Land Office Field Survey SubCommittee

Glen Campbell
Jim & Rene Ford
Joe Neiderheiser
Kelly Rarey
Mike Walker
Chris Wytcherley

C:\Documents and Settings\mike\My Documents\Genealogy\Applegate Trail
GLO Surveyed Points\JA15 South Rat Creek\BROCHURE 19 JA South Rat
Creek_JA15 030810.wpd

Hugo Neighborhood Association & Historical Society's Mission

This information brochure is one of a series of documents published by the Hugo Neighborhood Association & Historical Society (*Hugo Neighborhood*). It is designed to be shared with neighbors for the purpose of helping protect our rural quality of life by promoting an informed citizenry in decision-making. The *Hugo Neighborhood* is an informal nonprofit charitable and educational organization with a land use and history mission of promoting the social welfare of its neighbors.

Land Use & History

The *Hugo Neighborhood's* land use mission is to promote Oregon Statewide Goal 1 — Citizen Involvement, and to preserve, protect, and enhance the livability and economic viability of its farms, forests, and rural neighbors. It will act, if requested, as a technical resource assisting neighbors to represent themselves.

Its history mission is to educate, collect, preserve, interpret, and research its local history and to encourage public interest in the history of the Hugo area.

Volunteer membership dues are \$10.00 annually per family and normally used for paper, ink, envelopes, publications and mailings.

Hugo Neighborhood

3388B Merlin Rd # 195, Grants Pass, Oregon 97526
541-471-8271

Email: hugo@jeffnet.org

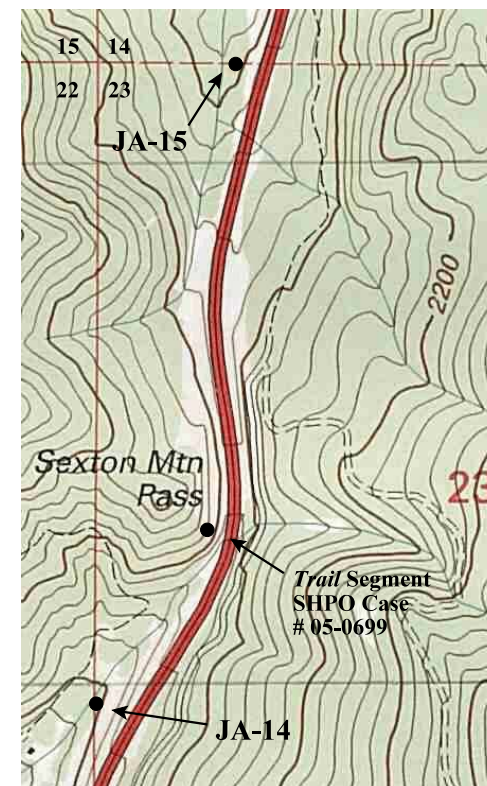
Web Page: <http://jeffnet.org/~hugo/>

Edited by Jean Boling, Jim & Rene Ford, Joe Neiderheiser,
Kelly Rarey, Mike Walker, & Chris Wytcherley

JR Of Applegate Trail: South Rat Creek (JA-15)



Brochure 19 of Applegate Trail GLO
Surveys Brochure Series



Merlin USGS Quad: 1998

March 8, 2010

**Hugo Emigrant Trails Committee
Hugo Neighborhood Association &
Historical Society
Josephine County Historical Society**