

Jacksonville Road (JR) Of Applegate Trail (*Trail*): Grade At Mt. Sexton Pass¹⁻²

Hugo's JA from Willamette Valley to Jacksonville (route of the Applegate Trail) is located in Josephine County, Oregon from Louse Creek in the south to Grave Creek in the north. There are 17 GLO surveyed points of interest (POI) along the JR in Hugo's area of interest.³ There are many more like this *Topography & Grade At Mt. Sexton Pass POI* without a GLO survey.

MT. SEXTON PASS TRAIL SEGMENT

POI Name Mt. Sexton Pass ■ JA-14B.

POI ID Code OR-AT-00-34-06-23-n/a-JA-14B

2010 TOPOGRAPHY & GRADE AT MT. SEXTON PASS

POI Name Topography & Grade At Mt. Sexton Pass ■ JA-14I.

POI ID Code OR-AT-00-34-06-23-n/a-JA-14I.

POI Located With GPS/Interpretative Sign No.

1853 Military Road Larry McLane, Historian⁴, feels that the *Trail* is the evolved 1853 military road. There is no indication of problems with vegetation or the road in diaries, journals, or reminiscences on the south slope of Grave Creek Hills in the upper Maple Creek drainage. Therefore, prior to road improvements near the summit from 1846 - 1853 emigrants probably traveled uphill near Maple Creek.

2010 Topography & Grade The road width is 9' - 10' at Mt. Sexton Pass. The topography of Grave Creek Hills traveling the south Mt. Sexton summit constricts the emigrant's route up the mountain in or near Maple Creek. The grade of the *Trail* segment would align with the original pass elevation at the old Smith house homestead.

Topography & Grade At Mt. Sexton Pass

Topography Maple Creek does not flow north and south at it's further upper reach. It's orientation is finally east toward Sexton Mountain in the vicinity of the 310' segment (see map on title page). The old topography after Maple Creek turns east was probably a north-south restricted draw with seasonal storm waters and sidelining of wagons to the summit. This



Grade At Mt. Sexton Pass

would fit the actual 1853 improvements of benching a road into a side hill.

Stakeholders

Oregon Highway Commission/Oregon Department of Transportation.

Be Respectful *Do not trespass. The Topography & Grade At Mt. Sexton Pass is located on public property.*

General Land Office (GLO) Surveys & Maps¹

Soils⁶ A majority of the soils along this segment of the *Trail* from Mt. Sexton Summit south in and around Maple Creek for approximately 1/4 mile are 21F – Cornutt-Dubakella complex, 35 to 55 percent south slopes.

Soils Cornutt formed colluvium derived dominantly from mixed **ultramafic rock** and altered sedimentary and extrusive igneous rock. Dubakella formed in colluvium and residuum derived dominantly from **serpentine and peridotite**. These soils have the common characteristics of being derived dominantly from serpentinite or peridotite (i.e., ultramafic rock). The ultramafic rock from which these soils developed is very high in content of magnesium and very low in calcium, which limits plant growth. The soils support the hypothesis that prior to 1853 emigrants probably traveled along open areas near Maple Creek.

OCTA Trail Classification Class ② Used Trail⁶
Coherence Rule Linear Uniformity. Yes
Corroborative Rule Confirming Evidence. Yes
Collateral Rule Physical/Topo Evidence. Yes
Correlation Rule Overall Agreement. Yes

More Information Contact a member of the Hugo Emigrant Trails Committee.

1. General Surveyor Office of Oregon. Subdivision Lines For 1856 Map (T.34., R. 6. W., Willamette Meridian). Field Notes. Surveyor Luke G Hyde. Contract February 19, 1855; Surveyed March 31, 1856; Hugo Neighborhood. 2006. *Hugo's Applegate Trail Field Notes*. Brochures 10A - 10D in Emigrant Trail Series. Hugo, OR.

2. Rose, Karen. 2006. Hugo Emigrant Trails Committee, Hugo Neighborhood Association & Historical Society. *Hugo's Applegate Trail Diaries, Journals & Reminiscences Project*. "Yellow Book Project" For Participants of the Diaries, Journals and Reminiscences Sub-Committee. Hugo, OR. Hugo Neighborhood. 2005 *Diaries & Journals*. Brochure 11 in Emigrant Trail Series. Hugo, OR; Hugo Neighborhood. 2006 *Diaries, Journals & Reminiscences Sub-Committee*. Brochure 11B in Emigrant Trail Series. Hugo, OR.

3. Hugo Neighborhood. 2009 *Hugo's Applegate Trail GLO Points of Interest*. Brochure 1 in Applegate Trail GLO Surveys Series. Hugo, OR.

4. McLane, Larry L. 1995. *First There Was Twogood*. Sexton Enterprises. Sunny Valley, OR.

5. United States Department of Agriculture. Soil Conservation Service. December 1983. *Soil Survey of Josephine County, Oregon*. (OR033) (Now Natural Resources Conservation Service (NRCS)).

6. Office of National Trails Preservation & Oregon-California Trails Association (P.O. box 1019, Independence, MO, 64051-0519, 816-252-2276, octa@indepmo.org). July 2002, 4th edition. *Mapping Emigrants Trails MET Field Manual*.

Hugo Emigrant Trails Committee

Hugo is blessed with a rich heritage of historic roads, rough though they were. The *Hugo Emigrant Trails Committee* was formed to bring together all those who want to learn more about the early transportation in the area, from the casual admirer to the dedicated researcher. Its aim is to collect and record information about Hugo's emigrant trails, especially its two historic 1850s General Land Office mapped roads, and to share this information (e.g., through *Hugo History Day*, talks, hikes, group visits, training exercises, workshops, publications, web sites, etc.).

Karen Rose, Co-Project Leader
Mike Walker, Co-Project Leader

Diaries, Journals & Reminiscences SubCommittee

Karen Rose
Janet McKy
Kelly & Berneata Rarey
Glen Campbell
Norm Tieman
Joe & Leta Neiderheiser
Kristen Boyce
Kathy Burkey
Penny Shipley
Mike Walker

General Land Office Field Survey SubCommittee

Glen Campbell
Jim & Rene Ford
Joe Neiderheiser
Kelly Rarey
Mike Walker
Chris Wytcherley

Hugo Neighborhood Association & Historical Society's Mission

This information brochure is one of a series of documents published by the Hugo Neighborhood Association & Historical Society (*Hugo Neighborhood*). It is designed to be shared with neighbors for the purpose of helping protect our rural quality of life by promoting an informed citizenry in decision-making. The *Hugo Neighborhood* is an informal nonprofit charitable and educational organization with a land use and history mission of promoting the social welfare of its neighbors.

Land Use & History

The *Hugo Neighborhood's* land use mission is to promote Oregon Statewide Goal 1 — Citizen Involvement, and to preserve, protect, and enhance the livability and economic viability of its farms, forests, and rural neighbors. It will act, if requested, as a technical resource assisting neighbors to represent themselves.

Its history mission is to educate, collect, preserve, interpret, and research its local history and to encourage public interest in the history of the Hugo area. Volunteer membership dues are \$10.00 annually per family and normally used for paper, ink, envelopes, publications and mailings.

Hugo Neighborhood

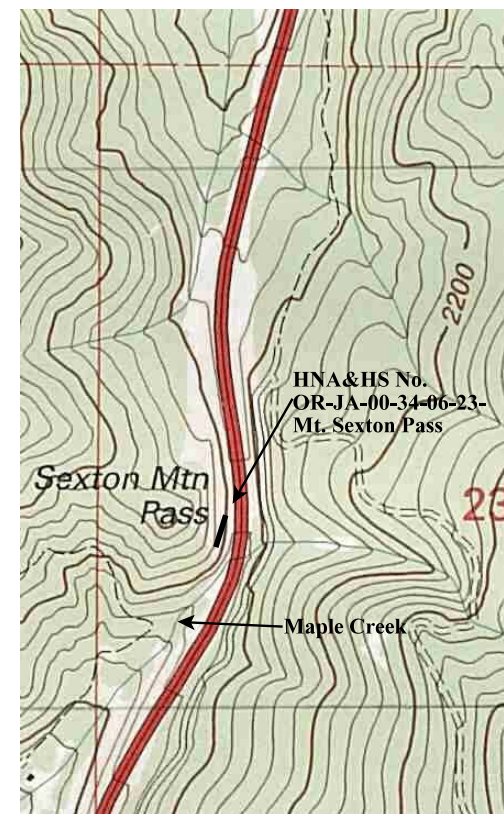
3388B Merlin Rd # 195, Grants Pass, Oregon 97526
541-471-8271
Email: hugo@jeffnet.org

Edited by Jean Boling, Kelly Rarey,
Karen Rose, & Mike Walker

JR Of Applegate Trail: Topography & Grade At Mt. Sexton Pass



Brochure 18I of Applegate Trail GLO
Surveys Brochure Series



April 21, 2010

Hugo Emigrant Trails Committee
Hugo Neighborhood Association &
Historical Society
Josephine County Historical Society