

Jacksonville Road (JR) Of Applegate Trail (*Trail*): 1853 Military Road¹

Hugo's JA from Willamette Valley to Jacksonville (route of the Applegate Trail) is located in Josephine County, Oregon from Louse Creek in the south to Grave Creek in the north. There are 17 GLO surveyed points of interest (POI) along the JR in Hugo's area of interest.³ There many more like this 1853 Military Road At Mt. Sexton Pass POI without a GLO survey.

MAPLE CREEK

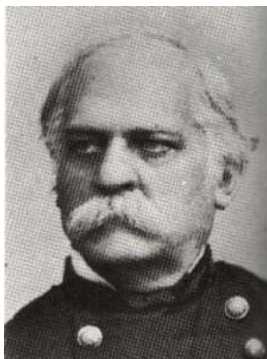
Road POI Name Maple Creek³ ■ JA-14A.
POI ID Code OR-AT-00-34-06-22/23-N-JA-14.

MT. SEXTON PASS TRAIL SEGMENT

POI Name Mt. Sexton Pass ■ JA-14B.
POI ID Code OR-AT-00-34-06-23-n/a-JA-14B

1853 MILITARY ROAD AT MT. SEXTON PASS

POI Name 1853 Military Road At Mt. Sexton Pass
■ JA-14C.
POI ID Code OR-AT-00-34-06-23-n/a-JA-14C.



Major Alvord

1853 Military Road⁴

Historian Larry McLane's professional opinion is that the road segment is the evolved 1853 military road from Oakland, Oregon to Fort Steward surveyed and improved by Major B. Alvord, U.S. Surveyor.⁵

POI Located With
GPS/Interpretative Sign No.

Territorial Road: 1854

1853 Military Road from Myrtle Creek to Jacksonville, Oregon was located and surveyed by Brevet Major B. Alvord, United State Army. There is a reference to the old military road in the Jackson County Commissioners April 4, 1853 Journal which declared the road a public highway.⁵ It was declared a territorial road on January 31, 1854 (Oregon Statesman newspaper).⁵

Railroad Survey The following quote is from *Volume VI - The Pacific Railroad Survey: 1855*⁵.



Burt's Solar Compass

Page 14. "From Myrtle creek, in Umpqua valley, to Jacksonville, in Rogue River valley, our field work has been checked by a sketch of the military road, located in 1853 by Brevet Major B. Alvord, 4th infantry. This sketch, which I think was never published, was kindly furnished by Major Alvord."

Surveyed The 1853 Military Road from Jacksonville to Canyonville was surveyed by Jesse Applegate with a Burt's Solar Compass.

Construction At Grave Creek Hills The 1853 Military Road was located or surveyed for its entire length, and constructed in two documented places: 1. 10 - 11 miles of the Canon, and 2. Grave Creek hills (see *Applegate Trail II*, "West of the Cascades").⁵

Military Road Constructed At Canon & Grave Creek Hills

Stakeholders Oregon Highway Commission/Oregon Department of Transportation (ODOT).

OCTA Trail Classification Class ② Used Trail⁶
Coherence Rule Linear Uniformity. Yes
Corroborative Rule Confirming Evidence. Yes
Collateral Rule Physical/Topo Evidence. Yes
Correlation Rule Overall Agreement. Yes

Be Respectful *Do not trespass. 1853 Military Road At Mt. Sexton Pass is located on public property.*

More Information Contact a member of the Hugo Emigrant Trails Committee.

1. General Surveyor Office of Oregon. Subdivision Lines For 1856 Map (T.34., R. 6. W., Willamette Meridian). Field Notes. Surveyor Luke G Hyde. Contract February 19, 1855; Surveyed March 31, 1856; Hugo Neighborhood. 2006. *Hugo's Applegate Trail Field Notes*. Brochures 10A - 10D in Emigrant Trail Series. Hugo, OR.
2. Rose, Karen. 2006. Hugo Emigrant Trails Committee, Hugo Neighborhood Association & Historical Society. *Hugo's Applegate Trail Diaries, Journals & Reminiscences Project*. "Yellow Book Project" For Participants of the Diaries, Journals and Reminiscences Sub-Committee. Hugo, OR. Hugo Neighborhood. 2005 *Diaries & Journals*. Brochure 11 in Emigrant Trail Series. Hugo, OR; Hugo Neighborhood. 2006 *Diaries, Journals & Reminiscences Sub-Committee*. Brochure 11B in Emigrant Trail Series. Hugo, OR.
3. Hugo Neighborhood. 2009 *Hugo's Applegate Trail GLO Points of Interest*. Brochure 1 in Applegate Trail GLO Surveys Series. Hugo, OR.
4. McLane, Larry L. 1995. *First There Was Twogood*. Sexton Enterprises. Sunny Valley, OR.
5. Hugo Emigrant Trails Committee, Hugo Neighborhood Association & Historical Society, May 25, 2008. MAJOR B. Alvord's Military Road: 1853 Brochure 13A in Trapper's Trail Series. Hugo, OR; Hugo Emigrant Trails Committee, Hugo Neighborhood Association & Historical Society, May 25, 2008. Military Road: 1853. Louse Creek to Grave Creek. Brochure 13B in Trapper's Trail Series. Hugo, OR; Klamath County Historical Society. Applegate Trail II, "West of the Cascades". Klamath Echoes. page 14.
6. Office of National Trails Preservation & Oregon-California Trails Association (P.O. box 1019, Independence, MO, 64051-0519, 816-252-2276, octa@indepmo.org). July 2002, 4th edition. *Mapping Emigrants Trails MET Field Manual*.

Hugo Emigrant Trails Committee

Hugo is blessed with a rich heritage of historic roads, rough though they were. The *Hugo Emigrant Trails Committee* was formed to bring together all those who want to learn more about the early transportation in the area, from the casual admirer to the dedicated researcher. Its aim is to collect and record information about Hugo's emigrant trails, especially its two historic 1850s General Land Office mapped roads, and to share this information (e.g., through *Hugo History Day*, talks, hikes, group visits, training exercises, workshops, publications, web sites, etc.).

Karen Rose, Co-Project Leader
Mike Walker, Co-Project Leader

Diaries, Journals & Reminiscences SubCommittee

Karen Rose
Janet McKy
Kelly & Berneata Rarey
Glen Campbell
Norm Tieman
Joe & Leta Neiderheiser
Kristen Boyce
Kathy Burkey
Penny Shipley
Mike Walker

General Land Office Field Survey SubCommittee

Glen Campbell
Jim & Rene Ford
Joe Neiderheiser
Kelly Rarey
Mike Walker
Chris Wytcherley

C:\Documents and Settings\mike\My Documents\Genealogy\Applegate Trail
GLO Surveyed Points\JA14 Maple Creek\BROCHURE 18C JA14C 1853
Military Road 042110.wpd

Hugo Neighborhood Association & Historical Society's Mission

This information brochure is one of a series of documents published by the Hugo Neighborhood Association & Historical Society (*Hugo Neighborhood*). It is designed to be shared with neighbors for the purpose of helping protect our rural quality of life by promoting an informed citizenry in decision-making. The *Hugo Neighborhood* is an informal nonprofit charitable and educational organization with a land use and history mission of promoting the social welfare of its neighbors.

Land Use & History

The *Hugo Neighborhood's* land use mission is to promote Oregon Statewide Goal 1 — Citizen Involvement, and to preserve, protect, and enhance the livability and economic viability of its farms, forests, and rural neighbors. It will act, if requested, as a technical resource assisting neighbors to represent themselves.

Its history mission is to educate, collect, preserve, interpret, and research its local history and to encourage public interest in the history of the Hugo area. Volunteer membership dues are \$10.00 annually per family and normally used for paper, ink, envelopes, publications and mailings.

Hugo Neighborhood

3388B Merlin Rd # 195, Grants Pass, Oregon 97526
541-471-8271
Email: hugo@jeffnet.org

Edited by Jean Boling, Kelly Rarey,
Karen Rose, & Mike Walker

JR Of Applegate Trail: 1853 Military Road At Mt. Sexton Pass



Brochure 18C of Applegate Trail GLO
Surveys Brochure Series



April 21, 2010

Hugo Emigrant Trails Committee
Hugo Neighborhood Association &
Historical Society
Josephine County Historical Society