

Hugo Emigrant Trails Committee¹⁻²

1855 GLO Survey On July 21, 2003 six volunteers¹⁻² found a 310' segment of the Applegate Trail (*Trail*) on the south slope of Grave Creek Hills at Mt. Sexton Pass: Hal Anthony, Malcolm Drake, Wayne McKy, Boyd Peters, Karen Rose, and Mike Walker. The segment's location is identified by the 1850s and 1890s General Land Office (GLO) surveys and maps, and a 1895 county map. The *Trail* is administered by the OR Dept. of Transportation.

1853 Military Road
Larry McLane,

Historian³, feels that the road segment is the evolved 1853 military road.

1860s Collins Telegraph Line Howard Banks, Insulator Expert⁴, feels that the road segment could go back to the Collins Telegraph Line in the 1860s when the line construction, in some places, went from tree to tree. He based this conclusion on some very old galvanized steel telegraph wire in an old maple tree along the road.

1. Hugo Neighborhood. 2005. Public Outreach & Educational Brochure Program: Hugo's Emigrant Trails. Hugo, OR.

2. Hugo Neighborhood. 2005. Hugo Applegate Trail Field Notes. Brochure 10. Hugo, OR.

3. McLane, Larry L. 1995. *First There Was Twogood*. Sexton Enterprises. Sunny Valley, OR.

4. Howard Banks. March 16, 2006. Interview. by Mike Walker. Banks is Publisher of Crown Jewels of the Wire & Expert on Insulators. Hugo, OR.



Wagon Trail Inventory - OR-AG-00-34-06-23-n/a-n/a-JA-14-B - Mt. Sexton Pass

1886 - 1887 PT Line Banks⁴ identified a downed pole at the south end of the road segment as a Postal Telegraph pole part of a line from 1886 - 1887 when everything was pole to pole.

In 1941 At Mt Sexton Pass a new right-of-way was cleared.⁵ The newspaper article's photo caption: "toward the summit from the Grants Pass side showing the steep, old dirt road on the left (*Trail* segment), the curving present high on the right, and the felled trees on the right-of-way."

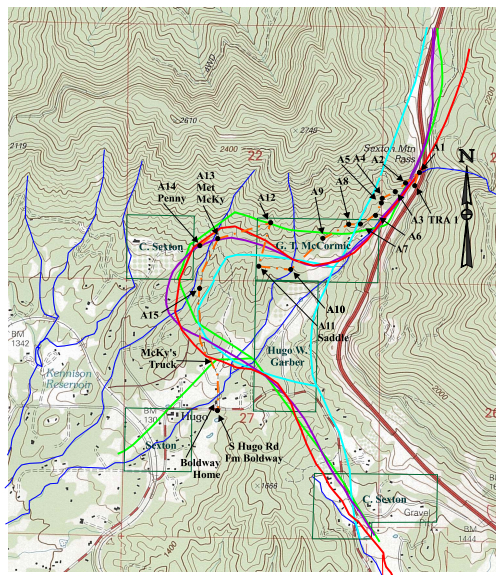
Applegate Trail Field Trip July 21, 2003

Hugo Neighborhood
Association &
Historical Society

1856 Road
1894 Road
1895 Road
1995 Atlas



07/21/03
Field Trip



Applegate Trail Segment: Mt. Sexton Pass

2005 Metal Detection Survey *SHPO Case # 05-0699: March 22, 2005.*⁶

2005 Big Tree On April 6, 2005 Virgil Witcher⁷, Professional Forester, aged a large old Douglas Fir tree with wound wood in the *Trail* at 75 years (dbh 33"). However, his hypothesis about wound wood and injury would make Big Tree much older. The new Pacific Highway was paved ca., 1921 and the old route was abandoned. Big Tree might be the same age of 107 years old as a nearby fir that Virgil believes is a cohort, and they are probably the same age.

2010 Topography & Grade The road width is 9' - 10'. The grade of the *Trail* segment would align with the original pass elevation at the Smith homestead.

2010 Anchor Chain A large chain is embedded in a large Ponderosa Pine near the bottom of the *Trail*.

Class ② Used Trail The *Trail* retains elements of its original character, but shows use by motor vehicles.

OCTA Trail Classification Class ② Used Trail.⁸
Coherence Rule Linear Uniformity. Yes
Corroborative Rule Confirming Evidence. Yes
Collateral Rule Physical/Topo Evidence. Yes
Correlation Rule Overall Agreement. Yes

5. Grants Pass Courier. January 6, 1941. Front Page, Right-of-Way Cleared on Sexton. Grants Pass, OR.

6. Hugo Emigrant Trails Committee. March 5, 2005. *Anomaly Detection Party*. HNA&HS. Hugo, OR.

7. Hugo Emigrant Trails Committee. April 6, 2005. *Big Tree Boring*. HNA&HS. Hugo, OR.

8. Office of National Trails Preservation & Oregon-California Trails Association (P.O. box 1019, Independence, MO, 64051-0519, 816-252-2276, octa@indepmo.org). July 2002, 4th edition. *Mapping Emigrants Trails MET Field Manual*.

Hugo Emigrant Trails Committee

Hugo is blessed with a rich heritage of historic roads, rough though they were. The *Hugo Emigrant Trails Committee* was formed to bring together all those who want to learn more about the early transportation in the area, from the casual admirer to the dedicated researcher. Its aim is to collect and record information about Hugo's emigrant trails, especially its two historic 1850s General Land Office mapped roads of the Applegate Trail, and to share this information (e.g., through *Hugo History Day*, talks, hikes, group visits, training exercises, workshops, publications, web sites, etc.).

Karen Rose, Co-Project Leader
Mike Walker, Co-Project Leader

Diaries, Journals & Reminiscences SubCommittee

Karen Rose
Janet McKy
Kelly & Berneata Rarey
Glen Campbell
Norm Tieman
Joe & Leta Neiderheiser
Kristen Boyce
Kathy Burkey
Penny Shipley
Mike Walker

General Land Office Field Survey SubCommittee

Glen Campbell
Jim & Rene Ford
Joe Neiderheiser
Kelly Rarey
Mike Walker
Chris Wytcherley

Brochure 18B in Emigrant Trails Brochure Series
HNA&HS 2010-3

C:\Documents and Settings\mike\My Documents\Genealogy\Applegate Trail
GLO Surveyed Points\JA14 Maple Creek\BROCHURE 18B JA14B Mt
Sexton Pass 042110.wpd

Hugo Neighborhood Association & Historical Society's Mission

This information brochure is one of a series of documents published by the Hugo Neighborhood Association & Historical Society (*Hugo Neighborhood*). It is designed to be shared with neighbors for the purpose of helping protect our rural quality of life by promoting an informed citizenry in decision-making. The *Hugo Neighborhood* is an informal nonprofit charitable and educational organization with a land use and history mission of promoting the social welfare of its neighbors.

Land Use & History

The *Hugo Neighborhood's* land use mission is to promote Oregon Statewide Goal 1 — Citizen Involvement, and to preserve, protect, and enhance the livability and economic viability of its farms, forests, and rural neighbors. It will act, if requested, as a technical resource assisting neighbors to represent themselves.

Its history mission is to educate, collect, preserve, interpret, and research its local history and to encourage public interest in the history of the Hugo area.

Volunteer membership dues are \$10.00 annually per family and normally used for paper, ink, envelopes, publications and mailings.

Hugo Neighborhood

3388B Merlin Rd # 195, Grants Pass, Oregon 97526
541-471-8271, Email: hugo@jeffnet.org
Web Page: <http://jeffnet.org/~hugo/>

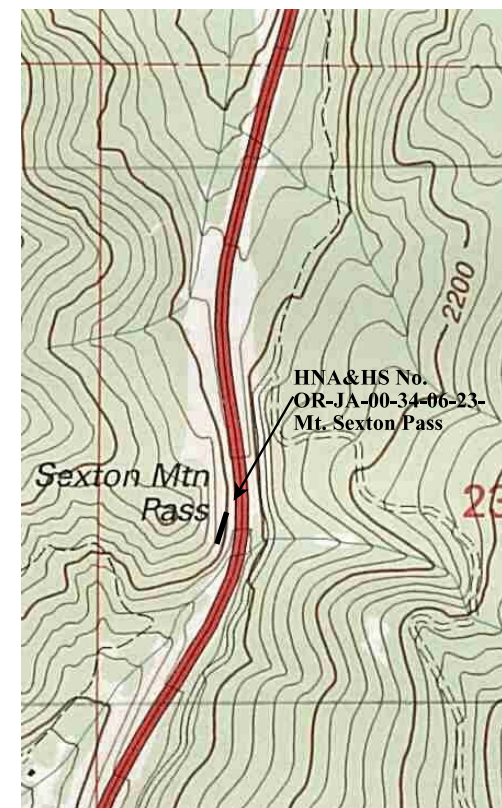
Edited by Jean Boling, Kelly Rarey,
Karen Rose, & Mike Walker

APPLEGATE TRAIL: MT. SEXTON PASS

OR-AG-00-34-06-23-n/a-n/a-JA-14-B
Mt. Sexton Pass



Brochure 18B of Applegate Trail GLO
Surveys Brochure Series



April 21, 2010

**Hugo Emigrant Trails Committee
Hugo Neighborhood Association &
Historical Society
Josephine County Historical Society**