

---

---

## Jacksonville Road (JR) Of Applegate Trail (*Trail*): Maple Creek (JA-14)<sup>1</sup>

**Hugo's Jacksonville Road (JA) from Willamette Valley to Jacksonville** (route of the Applegate Trail) is located in Josephine County, Oregon from Louse Creek in the south to Grave Creek in the north. There are 17 GLO surveyed points of interest (POI) along the JR in Hugo's area of interest.<sup>2</sup>

### MAPLE CREEK POI

**Road POI Name** Maple Creek<sup>3</sup> ■ JA-14.

**POI ID Code** OR-AT-00-34-06-22/23-N-JA-14.

**GLO Survey Notes for POI** Page 593. Subdivisions of T. 34 S., R. 6 W. - North between sections 22 & 23, Var S79°30'E.

### Chains

2.6 a Branch 1Lk [Link] wide c S 60NW

6.25 a Ridge c S.W

**18.50 Road to Jacksonville** S30°W&N20°E  
[18.50 chains = 1,221']

22.10 Spring branch [Maple Creek] 3 Lks [Links]  
wide c S30°N

### Latitude & Longitude of POI Calculated<sup>3</sup>

42° 35' 50.35" North Latitude

123° 23' 7.35" West Longitude

**POI GPS Located** Yes, in large western fill of I-5.

**Interpretative Sign** Yes, Wooden Stake in fill of I-5.

---

1. Hugo Neighborhood. 2009 *Hugo's Applegate Trail GLO Points of Interest*. Brochure 1 in Applegate Trail GLO Surveys Series. Hugo, OR.

---

---

## Diaries, Journals, & Reminiscences<sup>1</sup>

**Diaries, Journals and Reminiscences: 1846 - 1847<sup>5</sup>**  
<http://www.jeffnet.org/~hugo/applegat.htm>

Virgil Pringle on IV Road: " Sunday, October 18, 1846 - Have some bad road that takes till after dark to go 6 miles. 6 mile." Jumpoff Joe to north side of Grave Creek Hills.

1847 - Lester Hulin on JR: "W. 20<sup>th</sup> Upon leaving camp we soon came to a fine creek. Then bad roads ensued (rough hill and sideling) but by night we were in a valley with good camping ground at hand.

Distance 8 Ms."  
Fine creek was Jumpoff Joe Creek; good camping was Grave Creek.

### Public

**Ownership**  
Unlike most of the POIs for the "Road from Willamette Valley to Jacksonville, JA-14 is located on public land (see stakeholder).



**Bob Petretti at JA-14**

---

2. Hugo Neighborhood. 2009 *Hugo's Jacksonville Road Of Applegate Trail Points of Interest*. Brochure 2 in Applegate Trail GLO Surveys Series. Hugo, OR.

---

---

## General Land Office (GLO) Surveys & Maps<sup>1</sup>

**Patents** JA-14 is located on the eastern boundary of the McCormick homestead and the western boundary of the Smith homestead.

1885 Hugo Homestead On September 15, 1893 George T. McCormick was issued a homestead patent for 80 acres in Hugo, Oregon (Patent No. 3164). The homestead was along the Applegate Trail.  
1924 On October 13, 1924 Robert E. Smith was issued a homestead certificate for 80 acres in Hugo, Oregon (Patent No. 011891).

**Stakeholder** Oregon Highway Commission (public)  
South Access to I-5 fill: Elaine White, c/o Jeff White  
Tax Lot 600 (69.65 acres), Section 22  
King City, Oregon

**OCTA Trail Classification** Class ④ Verified Trail.

**Coherence Rule** Linear Uniformity. Yes  
**Corroborative Rule** Confirming Evidence. Yes  
**Collateral Rule** Physical/Topo Evidence. Yes  
**Correlation Rule** Overall Agreement. Yes

**Be Respectful** *Do not trespass. JA-14 is located on publicly administered lands.*

**Want more information?** Contact an officer of the *Hugo Neighborhood* on how you can become involved in land use and history in the Hugo community.

---

3. 1856 General Land Office Field Survey Sub-Committee, Hugo Emigrant Trails Committee, Hugo Neighborhood Association & Historical Society. February 10, 2006. *General Land Office Field Survey Notes: Hugo's Applegate Trail Segments*. Hugo, OR.

## Hugo Neighborhood Association & Historical Society's Mission

This information brochure is one of a series of documents published by the Hugo Neighborhood Association & Historical Society (*Hugo Neighborhood*). It is designed to be shared with neighbors for the purpose of helping protect our rural quality of life by promoting an informed citizenry in decision-making. The *Hugo Neighborhood* is an informal nonprofit charitable and educational organization with a land use and history mission of promoting the social welfare of its neighbors.

### Land Use & History

The *Hugo Neighborhood's* land use mission is to promote Oregon Statewide Goal 1 — Citizen Involvement, and to preserve, protect, and enhance the livability and economic viability of its farms, forests, and rural neighbors. It will act, if requested, as a technical resource assisting neighbors to represent themselves.

Its history mission is to educate, collect, preserve, interpret, and research its local history and to encourage public interest in the history of the Hugo area.

Volunteer membership dues are \$10.00 annually per family and normally used for paper, ink, envelopes, publications and mailings. Send us your e-mail address if you want to know what we are doing.

Email: [hugo@jeffnet.org](mailto:hugo@jeffnet.org)  
Web Page: <http://jeffnet.org/~hugo/>  
Edited by Jean Boling, Kelly Rarey,  
Karen Rose & Mike Walker

### HNA&HS Officers

Hal Anthony, Outreach Chair  
3995 Russell Road  
Grants Pass, Oregon 97526

Wayne McKy, Chair  
6497 Hugo Road  
Grants Pass, Oregon 97526

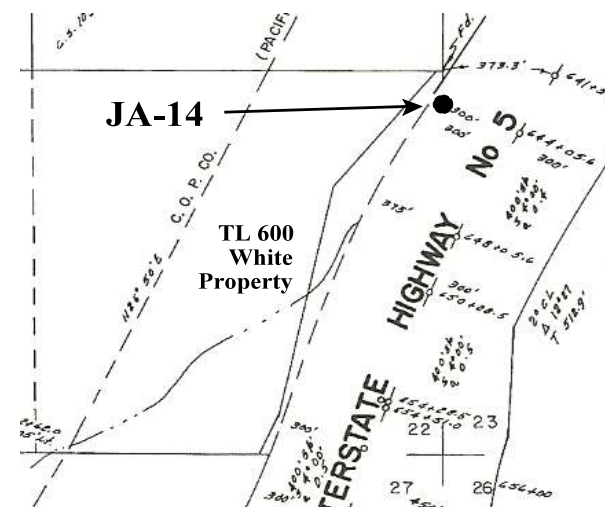
Mike Walker, Education Chair  
3388B Merlin Rd #195  
Grants Pass, Oregon 97526

Brochure 18 of 37: Applegate Trail POI Series -  
HNA&HS 2009 - 78  
C:\Documents and Settings\mike\My  
Documents\Genealogy\Applegate Trail GLO Surveyed  
Points\JA14 Maple Creek\BROCHURE 18 JA Maple Creek\_JA14  
030710.wpd

## JR Of Applegate Trail: Maple Creek (JA-14)



Very Draft for Review & Editing  
Brochure 18 of Applegate Trail GLO  
Surveys Brochure Series



JA-14: Oregon Highway Commission  
Tax Lot 600, Section 22, White Property

March 7, 2010

Hugo Emigrant Trails Committee  
Hugo Neighborhood Association &  
Historical Society  
Josephine County Historical Society