

Jacksonville Road (JR) Of Applegate Trail (*Trail*): Penny Ridge (JA-13)¹

Hugo's Jacksonville Road (JA) from Willamette Valley to Jacksonville (route of the Applegate Trail) is located in Josephine County, Oregon between Louse Creek in the south to Grave Creek in the north.²

PENNY RIDGE POI

Road POI Name Penny Ridge³ ■ JA-13.

POI ID Code OR-AT-00-34-06-22/27-W-JA-13.

GLO Survey Notes for POI Page 610. Subdivisions of T. 34 S., R. 6 W. S 89° 57', W [West] on true Line between sections 22 & 27.

Chains

40.40 a Ridge c S.W. (+ 5)

62.30 a Branch in Ravine c S20°W. 5 Lks wide

63.40 Jacksonville Road S15°W (+ 20)
[63.40 chains = 4,184.4']

79.86 To Sec Corner (+ 15) [79.86 ch = 5,270.76']

Latitude & Longitude of POI Calculated³

42° 35' 38.30" North Latitude

123° 24' 2.88" West Longitude

POI Located With GPS With permission at private fence line.

Interpretative Sign; Metal Detection Work Not yet; with permission.

1. Hugo Neighborhood. 2009 *Hugo's Applegate Trail GLO Points of Interest*. Brochure 1 in Applegate Trail GLO Surveys Series. Hugo, OR.

2. Hugo Neighborhood. 2009 *Hugo's Jacksonville Road Of Applegate Trail Points of Interest*. Brochure 2 in Applegate Trail GLO Surveys Series. Hugo, OR.

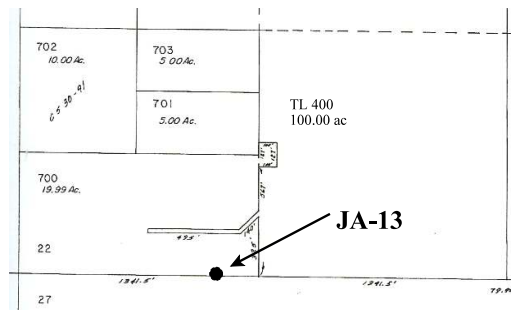
3. 1856 General Land Office Field Survey Sub-Committee, Hugo Emigrant Trails Committee, Hugo Neighborhood Association & Historical Society. February 10, 2006. *General Land Office Field Survey Notes: Hugo's Applegate Trail Segments*. Hugo, OR.

Diaries, Journals, & Reminiscences¹

Diaries, Journals and Reminiscences: 1846 - 1847⁵
<http://www.jeffnet.org/~hugo/applegat.htm>

Virgil Pringle on JR: " Sunday, October 18, 1846 - Have some bad road that takes till after dark to go 6 miles. 6 mile." Jumpoff Joe Creek to north side of Grave Creek Hills.

1847 - Lester Hulin on JR: "W. 20th Upon leaving camp we soon came to a fine creek. Then bad roads



Tax Lot 700, Section 22, Bates Property

at hand. Distance 8 Ms." Fine creek was Jumpoff Joe Creek; good camping was Grave Creek.

The bad road and sideling comments match the GLO section line description between section 22 and 27 and the topography shown on the Merlin Quadrangle.

Patents JA-13 is located on the southern boundary of Sexton's 1870 forty acre cash entry No. 2633 (became Echo Cove Orchard), and the northern boundary of the 1896 railroad patent No. 38 for 160 acres.

General Land Office (GLO) Surveys & Maps¹

Cash Entry No. 2633 On October 10, 1870 Caroline Sexton purchased six government parcels totaling 240 acres under Cash Entry No. 2633 in Josephine County. One of those parcels was 40 acres in the SWSW, Section 22, T.34S., R.6W., W.M. This 40 had access to the only through road in the area, the Applegate Trail, and the southern half was sub-irrigated and relatively clear of trees and brush, a ready to use irrigated pasture for most of the year.

Stakeholders

Verne & Anna Bates

Tax Lot 700, Section 22, T.34S., R.6W., WM.
19.99 acres

Robert "Bob" Petretti

Tax Lot 711, Section 27, T.34S., R.6W., WM.
6.64 acres

OCTA Trail Classification Class ③ or Class ④
Verified Trail.

Coherence Rule Linear Uniformity. Yes

Corroborative Rule Confirming Evidence. Yes

Collateral Rule Physical/Topo Evidence. No

Correlation Rule Overall Agreement. Yes

Be Respectful *Do not trespass. JA-13 is located on private property not open to the public.*

Want more information? Contact an officer of the *Hugo Neighborhood* on how you can become involved in land use and history in the Hugo community.

Hugo Emigrant Trails Committee

Hugo is blessed with a rich heritage of historic roads, rough though they were. The *Hugo Emigrant Trails Committee* was formed to bring together all those who want to learn more about the early transportation in the area, from the casual admirer to the dedicated researcher. Its aim is to collect and record information about Hugo's emigrant trails, especially its two historic 1850s General Land Office mapped roads, and to share this information (e.g., through *Hugo History Day*, talks, hikes, group visits, training exercises, workshops, publications, web sites, etc.).

Karen Rose, Co-Project Leader
Mike Walker, Co-Project Leader

Diaries, Journals & Reminiscences SubCommittee

Karen Rose
Janet McKay
Kelly & Berneata Rarey
Glen Campbell
Norm Tieman
Joe & Leta Neiderheiser
Kristen Boyce
Kathy Burkey
Penny Shipley
Mike Walker

General Land Office Field Survey SubCommittee

Glen Campbell
Jim & Rene Ford
Joe Neiderheiser
Kelly Rarey
Mike Walker
Chris Wytcherley

C:\Documents and Settings\mike\My Documents\Genealogy\Applegate Trail
GLO Surveyed Points\JA13 Penny Ridge\BROCHURE 17A JA Penny
Ridge_JA13 030710.wpd

Hugo Neighborhood Association & Historical Society's Mission

This information brochure is one of a series of documents published by the Hugo Neighborhood Association & Historical Society (*Hugo Neighborhood*). It is designed to be shared with neighbors for the purpose of helping protect our rural quality of life by promoting an informed citizenry in decision-making. The *Hugo Neighborhood* is an informal nonprofit charitable and educational organization with a land use and history mission of promoting the social welfare of its neighbors.

Land Use & History

The *Hugo Neighborhood's* land use mission is to promote Oregon Statewide Goal 1 — Citizen Involvement, and to preserve, protect, and enhance the livability and economic viability of its farms, forests, and rural neighbors. It will act, if requested, as a technical resource assisting neighbors to represent themselves.

Its history mission is to educate, collect, preserve, interpret, and research its local history and to encourage public interest in the history of the Hugo area. Volunteer membership dues are \$10.00 annually per family and normally used for paper, ink, envelopes, publications and mailings.

Hugo Neighborhood

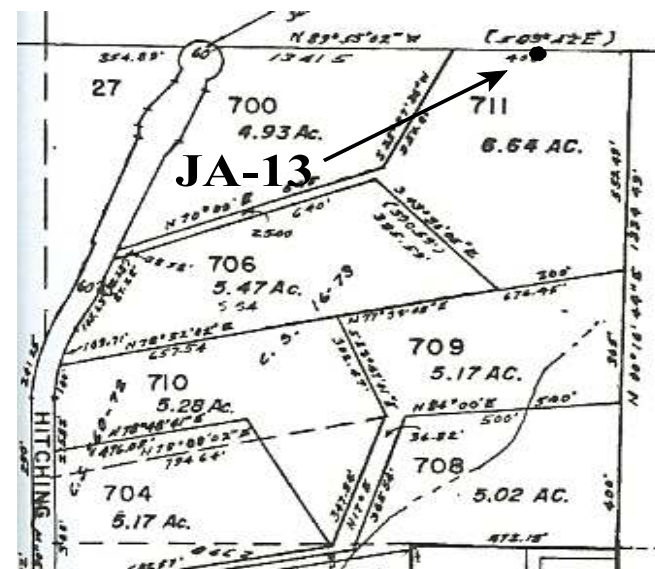
3388B Merlin Rd # 195, Grants Pass, Oregon 97526
541-471-8271
Email: hugo@jeffnet.org

Edited by Jean Boling, Kelly Rarey,
Karen Rose, Mike Walker

JR Of Applegate Trail: Penny Ridge (JA-13)



Very Draft for Review & Editing
Brochure 17A of Applegate Trail GLO
Surveys Brochure Series



Tax Lot 711, Section 27, Petretti Property

March 7, 2010

Hugo Emigrant Trails Committee
Hugo Neighborhood Association &
Historical Society
Josephine County Historical Society