

## Jacksonville Road (JR) Of Applegate Trail (*Trail*): Garbers Pass? (JA-12C)<sup>1</sup>

**Hugo's Jacksonville Road (JA) from Willamette Valley to Jacksonville** (route of the Applegate Trail) is located in Josephine County, Oregon from Louse Creek in the south to Grave Creek in the north.

### GARBERS PASS ROUTE? JA-12C

**POI Name** Garbers Pass Route<sup>3</sup> ■ JA-12C

**POI ID Code** OR-AG-25-34-06-27-n/a-n/a-JA-12-C

**GLO Survey** There is no survey information pertaining to the location of the *Trail* for over one mile between JA-12B and JA-13A.

**1856 GLO Map** The GLO map locates the *Trail* paralleling Bannister Creek and then over a ridge into the Maple Creek sub-drainage (Map 1).

**Diaries** There are no diaries, journals, or reminiscences locating JA-12C, or vegetation barrier issues except for at Louse Creek, Jumpoff Joe Creek, and north slope Grave Creek Hills.

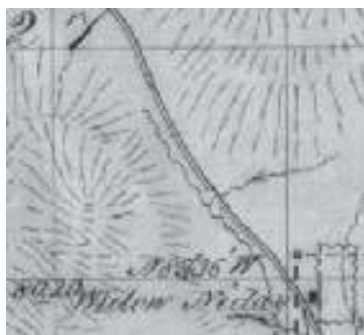
**Alternatives North Of JA-12B** There are presently three alternate *Trail* routes being researched north of JA-12B (Map 3).

1. Garbers Pass Route (approximately 1,500')
2. GLO Summit Route (approximately 1,620')
3. West Garbers Saddle (approximately 1,500')

**Alternative No. 1 Garbers Pass Route** Some folks believe the *Trail* basically goes north uphill along the present Hugo Road over Garbers Pass. Hugo was named after homesteader Hugo Garber(s) in 1896 whose 80-acre ranch covered this low pass.

## Diaries, Journals, & Reminiscences<sup>2</sup>

**Alternative No. 2 GLO Summit** The 1856 GLO map depicts a route to the west of Garbers Pass to summit in line with the present course of upper Bannister Creek.



Map 1. SE Quarter, Section 27

### Alternative No.3 West Garbers Saddle

This saddle is just west of the GLO summit.

### Working Hypothesis

is that, except when traversing mountains and ridges, the *Trail* was located in the narrow valleys which

in 1846 - 1855 were generally open woodlands and prairies located next to trees clustered along streams. Native American's bottom land burning would have maintained the open woodlands. Alternatives 2 and 3 fit this hypothesis better than Alternative 1.

The course alignment of GLO JA-11 and JA-12A, and DLC JA-12B<sup>3</sup> better fit Alternatives 2 and 3.

**1901 - 1902 USGS Survey** The USGS topography map shows two parallel roads in the SE quarter of Section 27. Road to the east is present Hugo Road.<sup>5</sup> The west road seems to match Alternative 2.

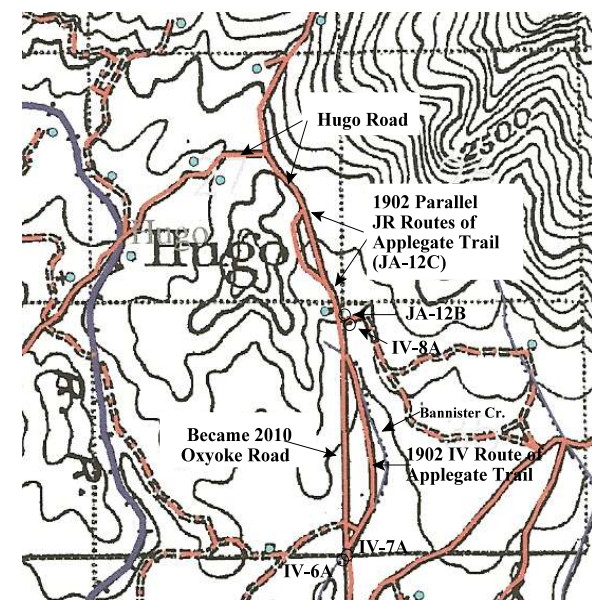
**OCTA Trail Classification Class ⑤ Approximate Trail** JA-12C's location is general.<sup>4</sup>

1. General Surveyor Office of Oregon. Subdivision Lines For 1856 Map (T.34., R. 6. W., Willamette Meridian). Field Notes. Surveyor Luke G Hyde. Contract February 19, 1855; Surveyed March 31, 1856; Hugo Neighborhood. 2006. *Hugo's Applegate Trail Field Notes*. Brochures 10A - 10D in Emigrant Trail Series. Hugo, OR.

## General Land Office (GLO) Surveys & Maps<sup>1</sup>

**Stakeholders** 1. Condray Rev Liv Trust, c/o Jerry Lee Condray, Tax Lot 300, Section 27, T.34S., R.6W., WM.; 2. Richard Condray, Tax Lots 307 & 900, Section 27, T.34S., R.6W., WM.; 3. Daniel & Joan Rowe, Tax Lot 902, Section 27, T.34S., R.6W., WM.; & 4. Shirley A. Lawrence, Tax Lot 700, Section 27AC, T.34S., R.6W., WM.

**Be Respectful** Do not trespass. JA-12C is located on private property not open to the public.



Map 2. 1902 JA-12C Trail Site

**More Information** Contact a member of the Hugo Emigrant Trails Committee.

2. Hugo Neighborhood. 2005 *Diaries & Journals*. Brochure 11 in Emigrant Trail Series. Hugo, OR; Hugo Neighborhood. 2006 *Diaries, Journals & Reminiscences Sub-Committee*. Brochure 11B in Emigrant Trail Series. Hugo, OR.  
3. Hiram Niday's Survey for his Donation Land Claim (DLC): February 3, 1857  
4. Office of National Trails Preservation & Oregon-California Trails Association (P.O. box 1019, Independence, MO, 64051-0519, 816-252-2276, octa@indepmo.org). July 2002. 4<sup>th</sup> edition. *Mapping Emigrants Trails MET Field Manual*.  
5. USGS. Edition of 1904, reprinted 1923. *Riddle Quadrangle*. Surveyed in 1901 - 1902.

## Hugo Emigrant Trails Committee

Hugo is blessed with a rich heritage of historic roads, rough though they were. The *Hugo Emigrant Trails Committee* was formed to bring together all those who want to learn more about the early transportation in the area, from the casual admirer to the dedicated researcher. Its aim is to collect and record information about Hugo's emigrant trails, especially its two historic 1850s General Land Office mapped roads, and to share this information (e.g., through *Hugo History Day*, talks, hikes, group visits, training exercises, workshops, publications, web sites, etc.).

Karen Rose, Co-Project Leader  
Mike Walker, Co-Project Leader

### *Diaries, Journals & Reminiscences SubCommittee*

Karen Rose  
Janet McKy  
Kelly & Berneata Rarey  
Glen Campbell  
Norm Tieman  
Joe & Leta Neiderheiser  
Kristen Boyce  
Kathy Burkey  
Penny Shipley  
Mike Walker

### *General Land Office Field Survey SubCommittee*

Glen Campbell  
Jim & Rene Ford  
Joe Neiderheiser  
Kelly Rarey  
Mike Walker  
Chris Wytcherley

C:\Documents and Settings\mike\My Documents\Genealogy\Applegate Trail  
GLO Surveyed Points\JA12 Niday Road North\BROCHURE 16C JA Garbers  
Pass Route\_JA12C 110610.wpd

## Hugo Neighborhood Association & Historical Society's Mission

This information brochure is one of a series of documents published by the Hugo Neighborhood Association & Historical Society (*Hugo Neighborhood*). It is designed to be shared with neighbors for the purpose of helping protect our rural quality of life by promoting an informed citizenry in decision-making. The *Hugo Neighborhood* is an informal nonprofit charitable and educational organization with a land use and history mission of promoting the social welfare of its neighbors.

### Land Use & History

The *Hugo Neighborhood's* land use mission is to promote Oregon Statewide Goal 1 — Citizen Involvement, and to preserve, protect, and enhance the livability and economic viability of its farms, forests, and rural neighbors. It will act, if requested, as a technical resource assisting neighbors to represent themselves.

Its history mission is to educate, collect, preserve, interpret, and research its local history and to encourage public interest in the history of the Hugo area. Volunteer membership dues are \$10.00 annually per family and normally used for paper, ink, envelopes, publications and mailings.

### *Hugo Neighborhood*

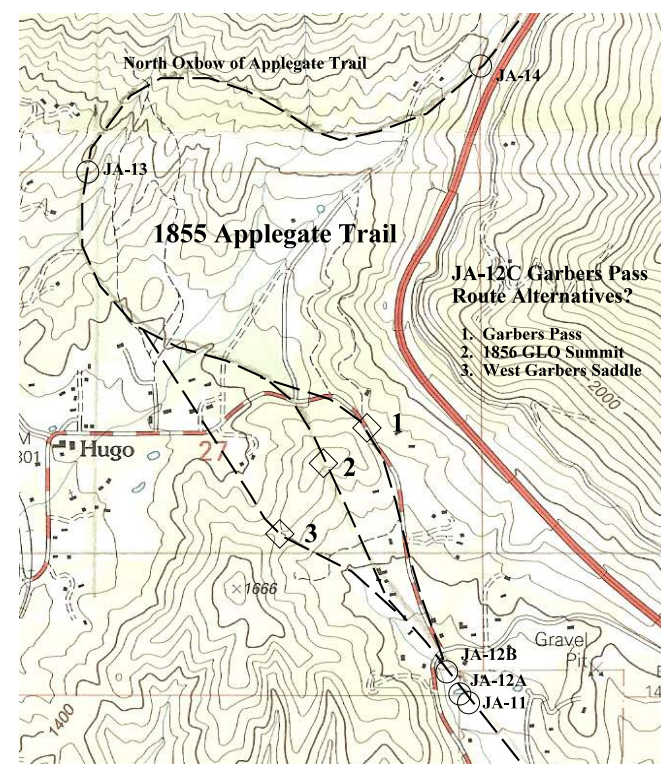
3388B Merlin Rd # 195, Grants Pass, Oregon 97526  
541-471-8271  
Email: hugo@jeffnet.org

Edited by Jean Boling,  
Karen Rose, & Mike Walker

## JR Of Applegate Trail: Garbers Pass Route? (JA-12C)



Draft Final Being Reviewed  
Brochure 16C of Applegate Trail  
GLO Surveys Brochure Series



Map 3. Alternate Applegate Trail Routes

November 6, 2010

Hugo Emigrant Trails Committee  
Hugo Neighborhood Association &  
Historical Society  
Josephine County Historical Society