

Jacksonville Road (JR) Of Applegate Trail (*Trail*): Niday DLC Survey (JA-12B)¹

Hugo's Jacksonville Road (JA) from Willamette Valley to Jacksonville (route of the Applegate Trail) is located in Josephine County, Oregon from Louse Creek in the south to Grave Creek in the north. There are 17 General Land Office (GLO) surveyed points of interest (POIs) along the JR in Hugo's area of interest.² JA-12B is not a GLO survey; it is a DLC survey.

NIDAY DLC SURVEY JA-12B

POI Name Niday DLC Survey³ ■ JA-12B.

POI ID Code OR-AT-00-34-06-n/a-n/a-JA-12B.

1857 DLC Survey Notes for C 40 POI Page 350.

C 40, T. 34 S., R. 6 W.

Niday DLC Notification No 692

Commencing at a post in Sec. 27 from which

[Beginning is NW corner of DLC]

- a W. Oak 20 in. dia bears S23" E 56 lks
- a DO 12 in. dia bears N9¾" W 57 lks
- a B. Oak 15 in. dia bears N88" E 108 lks
- House bears S72" E thence

South on the west boundary of C 40

Chains/Links

- 1/00 Road ESE & NW [1 chain = 66'; Although not definitive this survey more closely matches the 1856 GLO map *Trail* course parallel to Bannister Creek and not the junction of today's Hugo Road and Oxyoke Road and uphill along Hugo Road to Garber's Pass][DLC C-40 No. 1]
- 3/90 Intersect Sec. line The corner of Secs 26 27 34 & 35 bears East 3.81 chs [3 chains (198') + 90 links (1 link = 7.92" x 90 = 712.8"/12 = 59.4')] for total of 257.4']
- 5/20 N.W. corner of Barn

Diaries, Journals, & Reminiscences²

Latitude & Longitude POI Calculated³

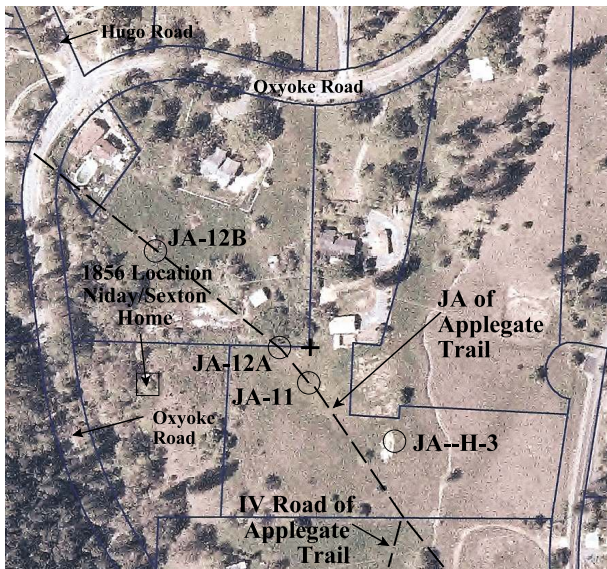
42° 34' 47.8" North Latitude. Need QC.
123° 23' 10.5" West Longitude. Need QC.

POI Located With GPS/C.S./Interpretative Sign
No.

Hiram Niday's Survey for his Donation Land Claim (DLC): February 3, 1857

Downloaded from BLM web site February 10, 2010
http://www.blm.gov/or/landrecords/survey/yNoteView1_2.php?D0030OR0350003520

OR-D0030. Hiram Niday: 1857 Survey No. 40,
Surveyor S. Truax.



Donation Land Claim (DLC) & Josephine County Surveys (C.S.) & Maps¹

Stakeholder

Kristin Boyce
TL 1000, Section 27DD, T.34S., R.6W., WM.
4.00 acres

OCTA Trail Classification Class ③ Verified Trail.⁴

Coherence Rule Linear Uniformity. Yes
Corroborative Rule Confirming Evidence. Yes
Collateral Rule Physical/Topo Evidence. Yes
Correlation Rule Overall Agreement. Yes

Be Respectful *Do not trespass. JA-12B is located on private property not open to the public.*

More Information Contact a member of the Hugo Emigrant Trails Committee.

1. General Surveyor Office of Oregon. Subdivision Lines For 1856 Map (T.34., R. 6. W., Willamette Meridian). Field Notes. Surveyor Luke G Hyde. Contract February 19, 1855; Surveyed March 31, 1856; Hugo Neighborhood. 2006. *Hugo's Applegate Trail Field Notes*. Brochures 10A - 10D in Emigrant Trail Series. Hugo, OR.
2. Rose, Karen. 2006. Hugo Emigrant Trails Committee, Hugo Neighborhood Association & Historical Society. *Hugo's Applegate Trail Diaries, Journals & Reminiscences Project*. "Yellow Book Project" For Participants of the Diaries, Journals and Reminiscences Sub-Committee. Hugo, OR. Hugo Neighborhood. 2005 *Diaries & Journals*. Brochure 11 in Emigrant Trail Series. Hugo, OR; Hugo Neighborhood. 2006 *Diaries, Journals & Reminiscences Sub-Committee*. Brochure 11B in Emigrant Trail Series. Hugo, OR.
3. Hiram Niday's Survey for his Donation Land Claim (DLC): February 3, 1857
4. Office of National Trails Preservation & Oregon-California Trails Association (P.O. box 1019, Independence, MO, 64051-0519, 816-252-2276, octa@indepmo.org). July 2002, 4th edition. *Mapping Emigrants Trails MET Field Manual*.

Hugo Emigrant Trails Committee

Hugo is blessed with a rich heritage of historic roads, rough though they were. The *Hugo Emigrant Trails Committee* was formed to bring together all those who want to learn more about the early transportation in the area, from the casual admirer to the dedicated researcher. Its aim is to collect and record information about Hugo's emigrant trails, especially its two historic 1850s General Land Office mapped roads, and to share this information (e.g., through *Hugo History Day*, talks, hikes, group visits, training exercises, workshops, publications, web sites, etc.).

Karen Rose, Co-Project Leader
Mike Walker, Co-Project Leader

Diaries, Journals & Reminiscences SubCommittee

Karen Rose
Janet McKy
Kelly & Berneata Rarey
Glen Campbell
Norm Tieman
Joe & Leta Neiderheiser
Kristen Boyce
Kathy Burkey
Penny Shipley
Mike Walker

General Land Office Field Survey SubCommittee

Glen Campbell
Jim & Rene Ford
Joe Neiderheiser
Kelly Rarey
Mike Walker
Chris Wytcherley

C:\Documents and Settings\mike\My Documents\Genealogy\Applegate Trail
GLO Surveyed Points\JA12 Niday Road North\BROCHURE 16B JA Niday
DLC Survey_JA12B 080310.wpd

Hugo Neighborhood Association & Historical Society's Mission

This information brochure is one of a series of documents published by the Hugo Neighborhood Association & Historical Society (*Hugo Neighborhood*). It is designed to be shared with neighbors for the purpose of helping protect our rural quality of life by promoting an informed citizenry in decision-making. The *Hugo Neighborhood* is an informal nonprofit charitable and educational organization with a land use and history mission of promoting the social welfare of its neighbors.

Land Use & History

The *Hugo Neighborhood's* land use mission is to promote Oregon Statewide Goal 1 — Citizen Involvement, and to preserve, protect, and enhance the livability and economic viability of its farms, forests, and rural neighbors. It will act, if requested, as a technical resource assisting neighbors to represent themselves.

Its history mission is to educate, collect, preserve, interpret, and research its local history and to encourage public interest in the history of the Hugo area. Volunteer membership dues are \$10.00 annually per family and normally used for paper, ink, envelopes, publications and mailings.

Hugo Neighborhood

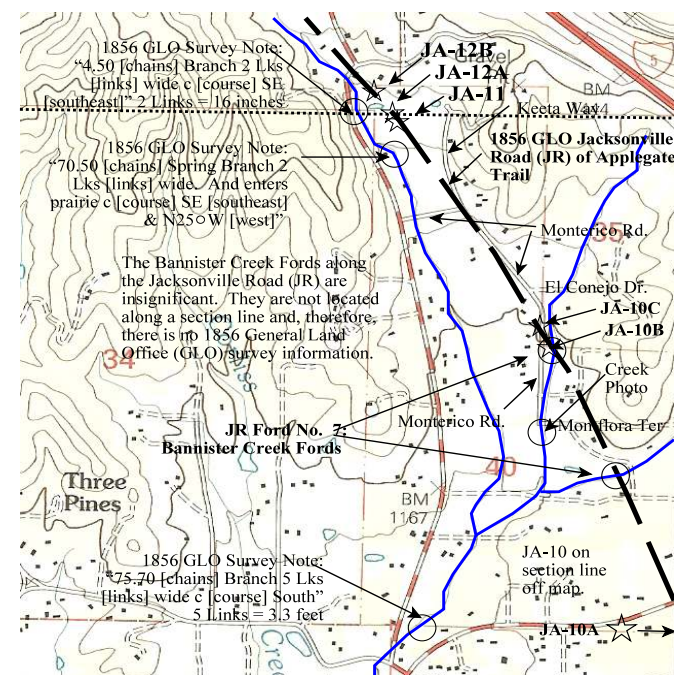
3388B Merlin Rd # 195, Grants Pass, Oregon 97526
541-471-8271
Email: hugo@jeffnet.org

Edited by Jean Boling, Kelly Rarey,
Karen Rose, & Mike Walker

JR Of Applegate Trail: Niday DLC Survey (JA-12B)



Draft Final Under Review
Brochure 16B of Applegate Trail GLO
Surveys Brochure Series



August 4, 2010

Hugo Emigrant Trails Committee
Hugo Neighborhood Association &
Historical Society
Josephine County Historical Society