

Pacific Highway: 1913 - 1926 US 99: 1926 - 1958 - 66¹

Pacific Highway/U.S. 99: 1913 - 1926 The 1922 completion of the 345 mile Pacific Highway in Oregon came with the distinction of being the first state west of the Mississippi to have a paved highway the entire length of the state. The Pacific Highway became U.S. 99 in 1926.

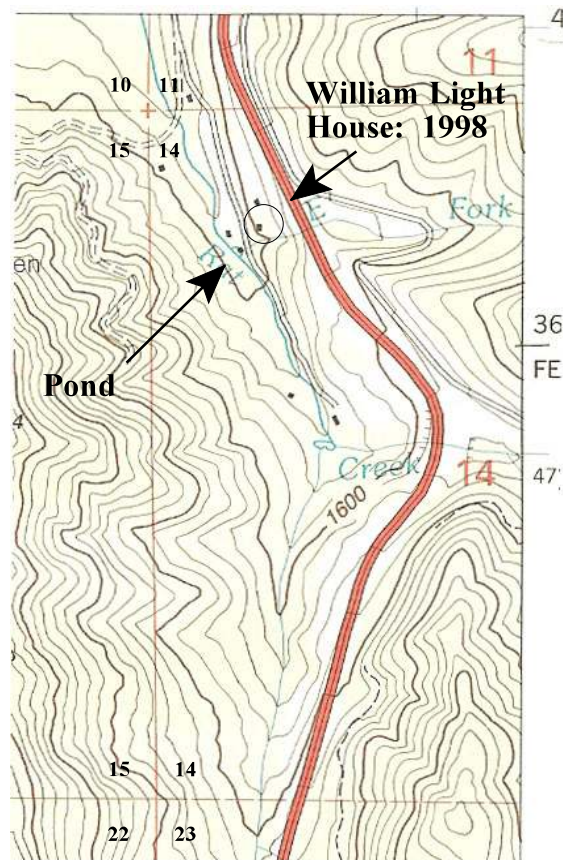
1895 What would become the Leidecker property had been granted to Frank A. Davis as a homestead in April 1895.

1899 “The William Light House was constructed in approximately 1899 by William Light who purchased the property from Samuel Pettingill in February of that year. William Light was born in 1862 in Illinois and came to California as a young man. He arrived in Oregon with his wife, Ella, in 1898. An uncle, Edward Light, was working in the northern Josephine County area as a bridge builder and in 1890 was responsible for the construction of the Grave Creek and Jump Off Joe Creek bridges. In 1908 the William Light’s purchased an additional 160 acres north and east of their land. William and Ella Light farmed throughout their lives. William Light died May 20, 1936.”²

1935 The Leidecker Fish Farm was established about 1935 as a tourist camp and recreation spot by Robert and Thelma Leidecker on the Pacific Highway route south of Grave Creek just as the route cleared Sexton Mountain. Ponds were formed from the waters of Rat Creek, fish raised and the ponds stocked. Locations for campers were established and visitors came to stay, fish and vacation in the rural setting.²

Hugo’s Regional Auto Camps¹

1936 It is presumed that the Leideckers purchased the property from the Light family about the time William Light died May 20, 1936.²



I-5 On North Side Of Mt. Sexton Pass: 1998

Leidecker Fish Farm & Tourist Camp

1950s - 1960s The Leidecker Fish Farm/Tourist Camp was on the north side of Sexton Mountain and was not accessible directly from either the U.S. 99 Highway or the North Pacific Highway (they were way up the mountain from that location). The Leideckers were more recent owners of this facility. In the 1950s - 1960s when driving up the north side of Sexton Mountain on the U.S. 99 Highway, you could look down the steep mountain side and see "FISHING" painted on the roof of a large barn at the fish farm (Clay Dickerson. February 2, 2010).

2010 The old Light Ranch is on the old Applegate Trail on today’s Old Stage Road, including an old large barn, an old two-story home, and pond along Rat Creek. The house, barn, and pond are clearly visible on 2002 aerial photographs and from I-5 above. Josephine County Assessor records identify the house was built in 1892 with 1,904’ of living area. (Mike Walker, February 3, 2010).

Research The *Hugo Neighborhood* has just started its research and documentation. Much of its auto camp/court and gas station history will never be known without help from its neighbors that wish to share their memories and photographs.

Want more information? Contact an officer of the *Hugo Neighborhood*.

1. Hugo Neighborhood Association & Historical Society. March , 2006. *Auto Camps* In Northern Josephine County: 1910 - 2001. Hugo, OR.

2. Atwood, Kay. 1983 - 1984. *Josephine County Historical Resources Inventory*. Developed for the Josephine County Planning Office. Volume I. Grants Pass, OR.

Hugo Neighborhood Association & Historical Society's Mission

This information brochure is one of a series of documents published by the Hugo Neighborhood Association & Historical Society (*Hugo Neighborhood*). It is designed to be shared with neighbors for the purpose of helping protect our rural quality of life by promoting an informed citizenry in decision-making. The *Hugo Neighborhood* is an informal nonprofit charitable and educational organization with a land use and history mission of promoting the social welfare of its neighbors.

Land Use & History

The *Hugo Neighborhood's* land use mission is to promote Oregon Statewide Goal 1 — Citizen Involvement, and to preserve, protect, and enhance the livability and economic viability of its farms, forests, and rural neighbors. It will act, if requested, as a technical resource assisting neighbors to represent themselves.

Its history mission is to educate, collect, preserve, interpret, and research its local history and to encourage public interest in the history of the Hugo area.

Volunteer membership dues are \$10.00 annually per family and normally used for paper, ink, envelopes, publications and mailings. Send us your e-mail address if you want to know what we are doing.

Email: hugo@jeffnet.org

Web Page: <http://jeffnet.org/~hugo/>

Edited by Jacque Hardwick, Karen Rose, & Mike Walker

Hugo Neighborhood Officers

Hal Anthony, Outreach Chair
3995 Russell Road
Grants Pass, Oregon 97526

Wayne McKy, Chair
6497 Hugo Road
Grants Pass, Oregon 97526

Mike Walker, Education Chair
3388B Merlin Rd #195
Grants Pass, Oregon 97526

Standing Committees

Historical Documents Editing Committee
Jacque Hardwick, Chair; Jean Boling, Karen Rose;
Wayne & Janet McKy; Mike Walker

Jean Boling, Chair, Pleasant Valley Cemetery Committee;
Co-Chair, Pioneers Committee

Mike Brassill, Chair, Wildflower Committee

Wayne McKy, Co-Chair, Hazardous Fuels Committee;
Chair, Orchard Committee;
Chair, Farm & Forest Committee

Karen Rose, Web Master; News Letter Editor
Hugo Whistle Stop; Co-Chair, Hugo Emigrant Trails
Committee; Chair, Native Americans Committee

Jon Whalen, Story Teller; Chair
Metal Detection Committee

Mike Walker, Co-Chair, Hugo Emigrant Trails Committee;
Co-Chair, Hazardous Fuels Committee; Chair, National
Historic Register Committee;
Co-Chair, Pioneers Committee

Tom Walker, Chair, Hugo Sign Committee

15A of Auto Camp Brochure Series - HNA&HS 2009 - 15A
C:\Documents and Settings\mike\My Documents\Genealogy\Auto_Camps\15
Leidecker Fish Farm_Tourist Camp\BROCHURE 15 Liedecker Fish Farm
_060210.wpd

Leidecker Fish Farm & Tourist Camp: 1935 - 1960

Brochure15A of Hugo's Auto Camp
Brochure Series



Old Light Ranch: 2003

June 2, 2010

**Hugo Neighborhood Association &
Historical Society**