

Jacksonville Road (JR) Of Applegate Trail (*Trail*): Niday Road South (JA-11)¹

Hugo's Jacksonville Road (JA) from Willamette Valley to Jacksonville (route of the Applegate Trail) is located in Josephine County, Oregon from Louse Creek in the south to Grave Creek in the north. There are 17 GLO surveyed points of interest (POI) along the JR in Hugo's area of interest.²

NIDAY ROAD SOUTH POI

Road POI Name Niday Road South³ ■ JA-11.

POI ID Code OR-AT-00-34-06-34/35-N-JA-11.

GLO Survey Notes for POI Page 589. Subdivisions of T. 34 S., R. 6 W., North Between Sections 34 & 35, Var 19.°00'E.

Chains

70.50 Spring Branch 2 lks [Links] wide and enter prairie C SE & N25NW

79.20 Road to Jacksonville c N60°W & SE Enter openings [70.50 chains = 5,227.2'] [5,280' - 5,227.2' = 52.8']

80.00 Set Post Cor to Secs 26.27.34 & 35 [80 chains = 5,280'] from which Widow Niday's house. S47°E 4 chs [chains] dist [4 chains = 264'; 50 chains = 5,280']

Latitude & Longitude of POI Calculated³

42° 34' 44.8" North Latitude
123° 23' 6.9" West Longitude

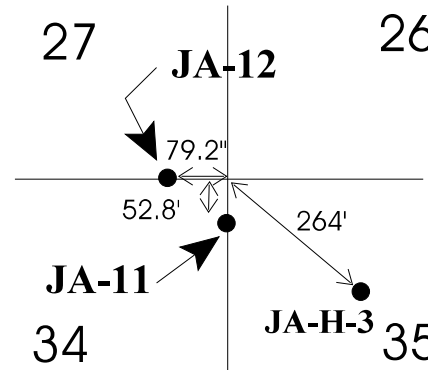
POI Located With GPS Not yet; with permission.

Interpretative Sign; Metal Detection Work

Not yet; with permission.

Diaries, Journals, & Reminiscences¹

Private Ownership JA-11 is located 52.6' south along the section line from the joint corner for sections 26, 27, 34, and 35. JA-11 is located entirely within the Squyres property.



26 Stakeholders
Philip and Rebecca Squyres
TL 605, Section 35, T.34S., R.6W., W.M. 5.15 acres

Patents JA-11 of the *Trail* is located in the northeast part of

the Niday Donation Land Claim (DLC; Patent No.1479). The course of JA-11 and two different survey and road courses of NW and SE from the 1857 DLC survey establish part of Monterico Road as an evolution of the *Trail*.

OCTA Trail Classification Class ③ or Class ④ Verified Trail.

Coherence Rule Linear Uniformity. Yes

Corroborative Rule Confirming Evidence. Yes

Collateral Rule Physical/Topo Evidence. Yes

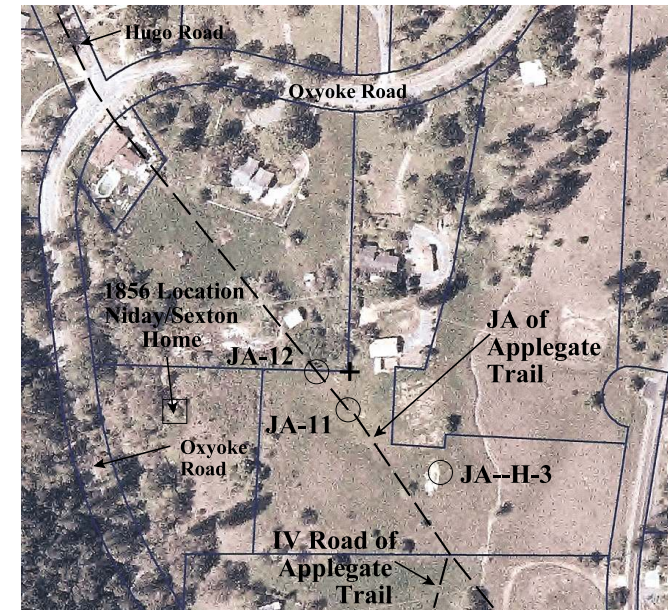
Correlation Rule Overall Agreement. Yes

1. Hugo Neighborhood. 2009 *Hugo's Applegate Trail GLO Points of Interest*. Brochure 1 in Applegate Trail GLO Surveys Series. Hugo, OR.

2. Hugo Neighborhood. 2009 *Hugo's Jacksonville Road Of Applegate Trail Points of Interest*. Brochure 2 in Applegate Trail GLO Surveys Series. Hugo, OR.

General Land Office (GLO) Surveys & Maps¹

Be Respectful *Do not trespass.* JA-11 is located on private property not open to the public.



Want more information? Contact an officer of the *Hugo Neighborhood* on how you can become involved in land use and history in the Hugo community.

3. 1856 General Land Office Field Survey Sub-Committee, Hugo Emigrant Trails Committee, Hugo Neighborhood Association & Historical Society. February 10, 2006. *General Land Office Field Survey Notes: Hugo's Applegate Trail Segments*. Hugo, OR.

Hugo Emigrant Trails Committee

Hugo is blessed with a rich heritage of historic roads, rough though they were. The *Hugo Emigrant Trails Committee* was formed to bring together all those who want to learn more about the early transportation in the area, from the casual admirer to the dedicated researcher. Its aim is to collect and record information about Hugo's emigrant trails, especially its two historic 1850s General Land Office mapped roads, and to share this information (e.g., through *Hugo History Day*, talks, hikes, group visits, training exercises, workshops, publications, web sites, etc.).

Karen Rose, Co-Project Leader
Mike Walker, Co-Project Leader

Diaries, Journals & Reminiscences SubCommittee

Karen Rose
Janet McKy
Kelly & Berneata Rarey
Glen Campbell
Norm Tieman
Joe & Leta Neiderheiser
Kristen Boyce
Kathy Burkey
Penny Shipley
Mike Walker

General Land Office Field Survey SubCommittee

Glen Campbell
Jim & Rene Ford
Joe Neiderheiser
Kelly Rarey
Mike Walker
Chris Wytcherley

C:\Documents and Settings\mike\My Documents\Genealogy\Applegate Trail
GLO Surveyed Points\JA11 Niday Road South\BROCHURE 15 JA Niday
Road South_JA11 030710.wpd

Hugo Neighborhood Association & Historical Society's Mission

This information brochure is one of a series of documents published by the Hugo Neighborhood Association & Historical Society (*Hugo Neighborhood*). It is designed to be shared with neighbors for the purpose of helping protect our rural quality of life by promoting an informed citizenry in decision-making. The *Hugo Neighborhood* is an informal nonprofit charitable and educational organization with a land use and history mission of promoting the social welfare of its neighbors.

Land Use & History

The *Hugo Neighborhood's* land use mission is to promote Oregon Statewide Goal 1 — Citizen Involvement, and to preserve, protect, and enhance the livability and economic viability of its farms, forests, and rural neighbors. It will act, if requested, as a technical resource assisting neighbors to represent themselves.

Its history mission is to educate, collect, preserve, interpret, and research its local history and to encourage public interest in the history of the Hugo area. Volunteer membership dues are \$10.00 annually per family and normally used for paper, ink, envelopes, publications and mailings.

Hugo Neighborhood

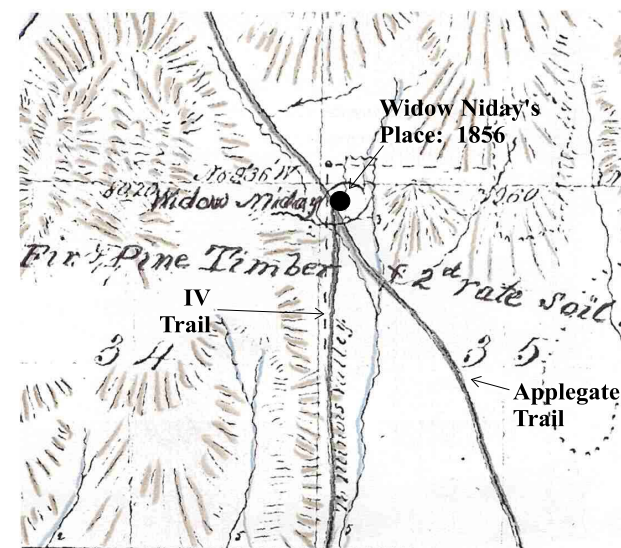
3388B Merlin Rd # 195, Grants Pass, Oregon 97526
541-471-8271
Email: hugo@jeffnet.org

Edited by Jean Boling, Kelly Rarey,
Karen Rose, & Mike Walker

JR Of Applegate Trail: Niday Road South (JA-11)



Very Draft for Review & Editing
Brochure 15 of Applegate Trail GLO
Surveys Brochure Series



1856 General Land Office Map

March 7, 2010

Hugo Emigrant Trails Committee
Hugo Neighborhood Association &
Historical Society
Josephine County Historical Society