

Jacksonville Road (JR) Of Applegate Trail (Trail): Niday DLC Survey (JA-10D)¹

Hugo's Jacksonville Road (JA) from Willamette Valley to Jacksonville (route of the Applegate Trail) is located in Josephine County, Oregon from Louse Creek in the south to Grave Creek in the north. There are 17 General Land Office (GLO) surveyed points of interest (POIs) along the JR in Hugo's area of interest.² JA-10D is not a GLO survey; it is a DLC survey.

NIDAY DLC SURVEY JA-10D

POI Name Niday DLC Survey³ ■ JA-10D

POI ID Code OR-AG-25-34-06-35-n/a-n/a-JA-10-D

February 3, 1857 DLC Survey Notes for C 40 POI Page 352. C 40, T. 34 S., R. 6 W., W.M.

Niday DLC Notification No 692

North on east boundary of [DLC] C 40

Chains/Links

3/00 Road, Leave Cul. Field [3 chains = 198'. It confirms working hypothesis that **Monterico Road, where it is orientated NW & SE, is the Applegate Trail**].

Latitude & Longitude POI Waymark

42° 34' 23.5" North Latitude

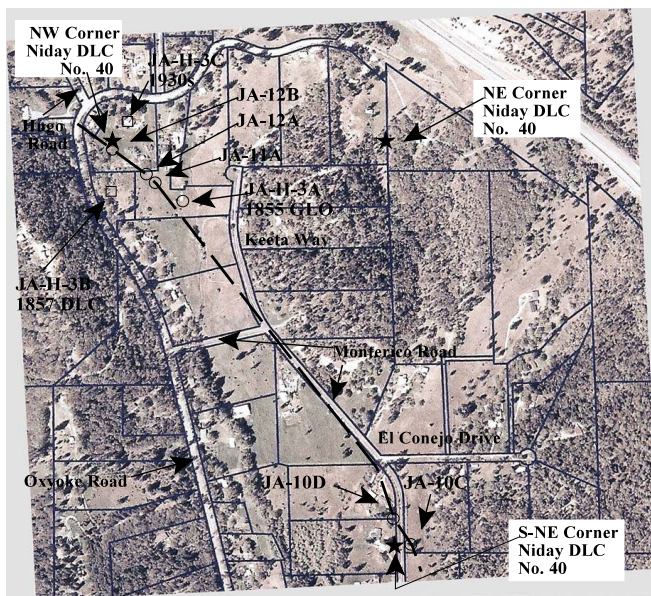
123° 22' 48.0" West Longitude

1. General Surveyor Office of Oregon. Subdivision Lines For 1856 Map (T.34., R. 6. W., Willamette Meridian). Field Notes. Surveyor Luke G Hyde. Contract February 19, 1855; Surveyed March 31, 1856; Hugo Neighborhood. 2006. *Hugo's Applegate Trail Field Notes*. Brochures 10A - 10D in Emigrant Trail Series. Hugo, OR.

2. Rose, Karen. 2006. Hugo Emigrant Trails Committee, Hugo Neighborhood Association & Historical Society. *Hugo's Applegate Trail Diaries, Journals & Reminiscences Project*. "Yellow Book Project" For Participants of the Diaries, Journals and Reminiscences Sub-Committee. Hugo, OR; Hugo Neighborhood. 2006 *Diaries, Journals & Reminiscences Sub-Committee*. Brochure 11B in Emigrant Trail Series. Hugo, OR.

Diaries, Journals, & Reminiscences²

POI Located With C.S./Interpretative Sign Yes, September 27, 2010.



Josephine County Marked Monument (i.e., 3/4" iron pipe with 3" diameter brass cap) was found: "COUNTY SURVEYOR, S- NE CORNER, NIDAY, DLC 40, 1970, \$500 FINE FOR REMOVAL".



The 1970 discovered mound of stone monument pipe was in, per C. S. 102-55, but the stone was not there in 2010. The monument was sticking out of the ground 10".

Donation Land Claim (DLC) & Josephine County Surveys (C.S.) & Maps¹

County Surveys C. S. 102-55; Josephine County Surveyor's Office Corner Book Notes (book 4, page 94; Book 6, page 32). **JA-10D is 198' north of S-NE Corner Niday DLC No. 40.**

Stakeholders 1. East One-half Public Property: Josephine County Public Works, and 2. West One-half Private Property: Marti. V. Walton, Tax Lot 627.

OCTA Trail

Classification Class ③

Verified Trail or Class ④

Verified Altered Trail.⁴

Coherence Rule Linear

Uniformity. Yes

Corroborative Rule

Confirming Evidence. Yes

Collateral Rule

Physical/Topo Evidence. No

Correlation Rule Overall

Agreement. Yes



Rene, Jim, Wayne & Mike At JA-10D

Be Respectful *Do not trespass. West JA-10D is located on private*

property not open to the public. East JA-10D is the western boundary of the Monterico Road ROW.

More Information Contact a member of the Hugo Emigrant Trails Committee.

3. Hiram Niday's Survey for his Donation Land Claim (DLC): February 3, 1857

4. Office of National Trails Preservation & Oregon-California Trails Association (P.O. box 1019, Independence, MO, 64051-0519, 816-252-2276, octa@indepmo.org). July 2002, 4th edition. *Mapping Emigrants Trails MET Field Manual*.

Hugo Emigrant Trails Committee

Hugo is blessed with a rich heritage of historic roads, rough though they were. The *Hugo Emigrant Trails Committee* was formed to bring together all those who want to learn more about the early transportation in the area, from the casual admirer to the dedicated researcher. Its aim is to collect and record information about Hugo's emigrant trails, especially its two historic 1850s General Land Office mapped roads, and to share this information (e.g., through *Hugo History Day*, talks, hikes, group visits, training exercises, workshops, publications, web sites, etc.).

Karen Rose, Co-Project Leader
Mike Walker, Co-Project Leader

Diaries, Journals & Reminiscences SubCommittee

Karen Rose
Janet McKy
Kelly & Berneata Rarey
Glen Campbell
Norm Tieman
Joe & Leta Neiderheiser
Kristen Boyce
Kathy Burkey
Penny Shipley
Mike Walker

General Land Office Field Survey SubCommittee

Glen Campbell
Jim & Rene Ford
Joe Neiderheiser
Kelly Rarey
Mike Walker
Chris Wytcherley

C:\Documents and Settings\mike\My Documents\Genealogy\Applegate Trail
GLO Surveyed Points\JA10 Monument Drive\BROCHURE 14D JA
Monument Drive_JA10D 100710.wpd

Hugo Neighborhood Association & Historical Society's Mission

This information brochure is one of a series of documents published by the Hugo Neighborhood Association & Historical Society (*Hugo Neighborhood*). It is designed to be shared with neighbors for the purpose of helping protect our rural quality of life by promoting an informed citizenry in decision-making. The *Hugo Neighborhood* is an informal nonprofit charitable and educational organization with a land use and history mission of promoting the social welfare of its neighbors.

Land Use & History

The *Hugo Neighborhood's* land use mission is to promote Oregon Statewide Goal 1 — Citizen Involvement, and to preserve, protect, and enhance the livability and economic viability of its farms, forests, and rural neighbors. It will act, if requested, as a technical resource assisting neighbors to represent themselves.

Its history mission is to educate, collect, preserve, interpret, and research its local history and to encourage public interest in the history of the Hugo area. Volunteer membership dues are \$10.00 annually per family and normally used for paper, ink, envelopes, publications and mailings.

Hugo Neighborhood

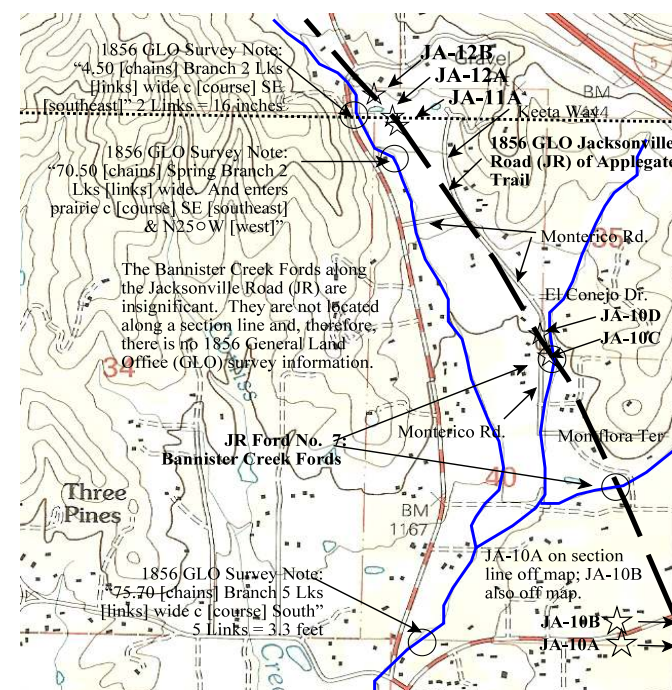
3388B Merlin Rd # 195, Grants Pass, Oregon 97526
541-471-8271
Email: hugo@jeffnet.org

Edited by Jean Boling, Karen Rose, & Mike Walker

JR Of Applegate Trail: Niday DLC Survey (JA-10D)



Brochure 14D of Applegate Trail GLO
Surveys Brochure Series



August 10, 2010
Updated October 7, 2010

**Hugo Emigrant Trails Committee
Hugo Neighborhood Association &
Historical Society
Josephine County Historical Society**