

Jacksonville Road (JR) Of Applegate Trail (*Trail*): Monument Drive (JA-10A)¹

Hugo's Jacksonville Road (JA) from Willamette Valley to Jacksonville (route of the Applegate Trail) is located in Josephine County, Oregon from Rouge River in the south to Grave Creek in the north.²

MONUMENT DRIVE POI

Road POI Name Monument Drive³ ■ JA-10A
POI ID Code OR-AG-00-34-06-S35-W-JA-10-A

1855 GLO Survey Notes for POI Page 263. Exterior line of T.34S., R.6W. South N89° 43', W [West] on South boundary of section 35.

Chains

36.85 Road from Willamette Valley to Jacksonville S40° E & N40°W bends south, crops, Cr ½ Mile S.
 [36.85 chains = 2,432.1']
 80.00 Set Post Cor to Secs 2, 3, 34 & 35

Latitude & Longitude of POI Calculated³

42° 33' 52.9" North Latitude
 123° 22' 29.0" West Longitude

POI Located With GPS /Bearing & Distance/

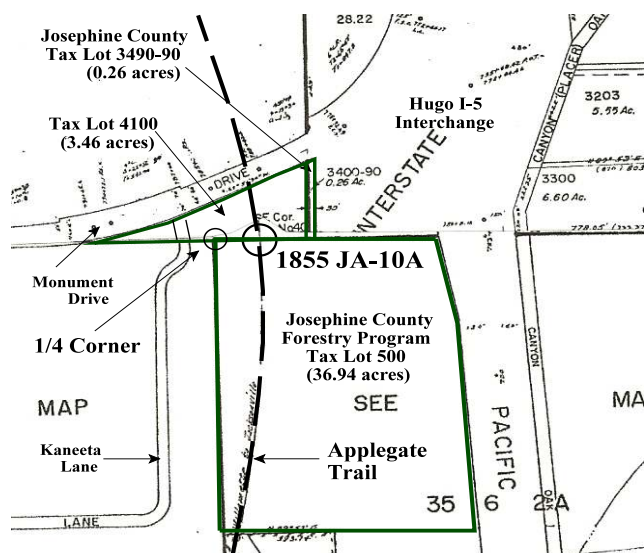
Interpretative Sign JA-10A was located April 16, 2010 with a wooden stake. It is 207.9' east of the section 1/4 corner between sections 2 and 35 (Sec. 2, T.35.S., R.6W; Sec. 35, T.34.S., R.6W). The section line is 5,280' long - 2,640' = 2,640'. JA-10A is 207.9' east of the 1/4 Corner (2,640' - 2,432.1' = 207.9').

1. Hugo Neighborhood. 2009 *Hugo's Applegate Trail GLO Points of Interest*. Brochure 1 in Applegate Trail GLO Surveys Series. Hugo, OR.
 2. Hugo Neighborhood. 2009 *Hugo's Jacksonville Road Of Applegate Trail Points of Interest*. Brochure 2 in Applegate Trail GLO Surveys Series. Hugo, OR.
 3. 1856 General Land Office Field Survey Sub-Committee, Hugo Emigrant Trails Committee, Hugo Neighborhood Association & Historical Society. February 10, 2006. *General Land Office Field Survey Notes: Hugo's Applegate Trail Segments*. Hugo, OR.

Diaries, Journals, & Reminiscences¹

Carsonite Marker The wooden stake was replaced on August 11, 2011 by four co-sponsors (*Hugo Neighborhood*, Josephine County Forestry Program (JCFP), Josephine County Historical Society (JCHS), and the NW Chapter of the Oregon-California Trails Association (NWOCTA), with a professional carsonite marker donated by the NWOCTA.

Patents JA-10 of the *Trail* is located on the south boundary of the Niday donation land claim (DLC) and the northern boundary of the Mattison homestead. Hiram Niday applied for a DLC in c.a., 1853 – claim



notification #692 (July 19, 1876 321.88 acre DLC Patent No.1479). Gaylord and Roda Mattison possessed 159 acres in Hugo, Oregon in 1895. They were proving up their homestead in the Bannister Creek drainage (March 17, 1897 Homestead Patent No. 3899 for 168.89 acres).

General Land Office (GLO) Surveys & Maps¹ & 1/4 Corner Monument

Ownership JA-10A is located on private and public property. 1. Leroy & Cybil Orton (private property) 3.46 acre Tax Lot 4100, Section 35C, T.34S., R.6W., W.M. 2. Josephine County Forestry Program (public property), 36.94 acre TL 500, Section 2A, T.35S., R.6W., W.M.

OCTA Trail Classification Class ④ Verified & Altered Trail.

Coherence Rule Linear Uniformity. Yes
Corroborative Rule Confirming Evidence. Yes
Collateral Rule Physical/Topo Evidence. No
Correlation Rule Overall Agreement. Yes

Be Respectful Do not trespass. JA-10A is located on private property not open to the public and public property needing permission..

Metal Detection Work Not yet; with permission.

Want more information?

Contact a member of the Hugo Emigrant Trails Committee on how you can become more involved in your community's history.



Photo 2. Kelly Rarey and Richard Marshall With Carsonite Marker At Hugo I-5 Interchange Parking

Hugo Emigrant Trails Committee

Hugo is blessed with a rich heritage of historic roads, rough though they were. The *Hugo Emigrant Trails Committee* was formed to bring together all those who want to learn more about the early transportation in the area, from the casual admirer to the dedicated researcher. Its aim is to collect and record information about Hugo's emigrant trails, especially its two historic 1850s General Land Office mapped roads of the Applegate Trail, and to share this information (e.g., through *Hugo History Day*, talks, hikes, group visits, training exercises, workshops, publications, web sites, etc.).

Karen Rose, Co-Project Leader
Mike Walker, Co-Project Leader

Diaries, Journals & Reminiscences SubCommittee

Jean Boling
Glen Campbell
Janet McKy
Joe & Leta Neiderheiser
Berneata Rarey
Kelly Rarey
Karen Rose
Mike Walker

General Land Office Field Survey SubCommittee

Glen Campbell
Jim Ford
Rene Ford
Joe Neiderheiser
Kelly Rarey
Mike Walker
Chris Wytcherley

C:\Documents and Settings\mike\My Documents\Genealogy\Applegate Trail
GLO Surveyed Points\JA10 Mounment Drive\BROCHURE 14A JA
Mounment Drive_JA10A OCTA 083111.wpd

Hugo Neighborhood Association & Historical Society's Mission

This information brochure is one of a series of documents published by the Hugo Neighborhood Association & Historical Society (*Hugo Neighborhood*). It is designed to be shared with neighbors for the purpose of helping protect our rural quality of life by promoting an informed citizenry in decision-making. The *Hugo Neighborhood* is an informal nonprofit charitable and educational organization with a land use and history mission of promoting the social welfare of its neighbors.

Land Use & History

The *Hugo Neighborhood's* land use mission is to promote Oregon Statewide Goal 1 — Citizen Involvement, and to preserve, protect, and enhance the livability and economic viability of its farms, forests, and rural neighbors. It will act, if requested, as a technical resource assisting neighbors to represent themselves.

Its history mission is to educate, collect, preserve, interpret, and research its local history and to encourage public interest in the history of the Hugo area.

Volunteer membership dues are \$10.00 annually per family and normally used for paper, ink, envelopes, publications and mailings.

Hugo Neighborhood

3388B Merlin Rd # 195, Grants Pass, Oregon 97526
541-471-8271, Email: hugo@jeffnet.org

Edited by Jean Boling, Joe Neiderheiser, Kelly Rarey,
Karen Rose, & Mike Walker

JR Of Applegate Trail: Monument Drive (JA-10A)

Brochure 14A OCTA of Applegate Trail GLO Surveys
Brochure Series



*Photo 1. Richard & Kathy Marshall,
Joe Neiderheiser, Wayne & Janet McKy,
Glen Campbell, and Mike Walker At JA-10A*

April 30, 2010
Updated August 31, 2011

Hugo Neighborhood
Josephine County Forestry Program
Josephine County Historical Society
NW Chapter of OCTA