

## Jacksonville Road (JR) Of Applegate Trail (*Trail*): Monument Drive (JA-10)<sup>1</sup>

**Hugo's Jacksonville Road (JA) from Willamette Valley to Jacksonville** (route of the Applegate Trail) is located in Josephine County, Oregon from Louse Creek in the south to Grave Creek in the north. There are 17 GLO surveyed points of interest (POI) along the JR in Hugo's area of interest.<sup>2</sup>

### MONUMENT DRIVE POI

**Road POI Name** Monument Drive<sup>3</sup> ■ JA-10A.

**POI ID Code** OR-AT-00-34-06-S35-W-JA-10A.

**1855 GLO Survey Notes for POI** Page 263. Exterior line of T.34S., R.6W. South N89° 43', W [West] on South boundary of section 35.

### Chains

**36.85 Road from Willamette Valley to Jacksonville** S40° E & N40°W bends south, crops, Cr ½ Mile S.  
[36.85 chains = 2,432.1']  
80.00 Set Post Cor to Secs 2, 3, 34 & 35

### Latitude & Longitude of POI Calculated<sup>3</sup>

42° 33' 52.9" North Latitude  
123° 22' 29.0" West Longitude

### POI Located With GPS /Bearing & Distance/

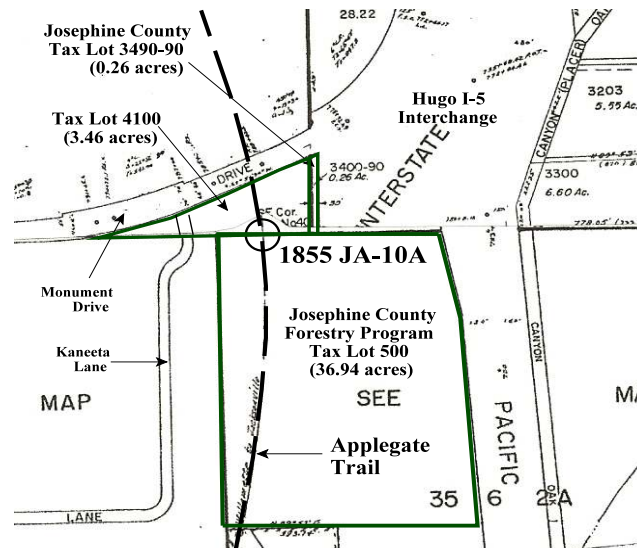
**Interpretative Sign** Yes, April 16, 2010, with permission. JA-10 is 207.9' east of the center of Section 2, T.35.S., R.6W (1/4 Corner). Center of Section 2 along section line which is 5,280' long - 2,640' = 2,640'. JA-10 is 207.9' east of the 1/4 Corner (2,640' - 2,432.1' = 207.9').

**Metal Detection Work** Not yet; with permission.

## Diaries, Journals, & Reminiscences<sup>1</sup>

**Patents** JA-10 of the *Trail* is located on the south boundary of the Niday donation land claim (DLC) and the northern boundary of the Mattison homestead.

Hiram Niday applied for a DLC in ca., 1852 - 1853 - claim notification #692 (July 19, 1876 321.88 acre DLC Patent No.1479). Gaylord and Roda Mattison possessed 159 acres in Hugo, Oregon in 1895. They were proving up their homestead in the Bannister Creek drainage (March 17, 1897 Homestead Patent No. 3899 for 168.89 acres).



1. Hugo Neighborhood. 2009 *Hugo's Applegate Trail GLO Points of Interest*. Brochure 1 in Applegate Trail GLO Surveys Series. Hugo, OR.  
2. Hugo Neighborhood. 2009 *Hugo's Jacksonville Road Of Applegate Trail Points of Interest*. Brochure 2 in Applegate Trail GLO Surveys Series. Hugo, OR.  
3. 1856 General Land Office Field Survey Sub-Committee. Hugo Emigrant Trails Committee, Hugo Neighborhood Association & Historical Society. February 10, 2006. *General Land Office Field Survey Notes: Hugo's Applegate Trail Segments*. Hugo, OR.

## General Land Office (GLO) Surveys & Maps<sup>1</sup> & 1/4 Corner Monument

**Ownership** JA-10 is located on private and public property. 1. Leroy & Cybil Orton (private property) 3.46 acre Tax Lot 4100, Section 35C, T.34S., R.6W., W.M. 2. Josephine County Forestry Program (public property), 36.94 acre TL 500, Section 2A, T.35S., R.6W., W.M. Access to Tax Lot 500 is through the .26 acre TL 3490-90 needing permission from Josephine County Public Works.

**OCTA Trail Classification** Class ④ Verified & Altered Trail.

**Coherence Rule** Linear Uniformity. Yes

**Corroborative Rule** Confirming Evidence. Yes

**Collateral Rule** Physical/Topo Evidence. No

**Correlation Rule** Overall Agreement. Yes

### Be Respectful

*Do not trespass. JA-10A is located on private property not open to the public and public property needing permission.*

### Want more information?

Contact a member of the Hugo Emigrant Trails Committee.



*Joe & Jim at JA-10*

## Hugo Emigrant Trails Committee

Hugo is blessed with a rich heritage of historic roads, rough though they were. The *Hugo Emigrant Trails Committee* was formed to bring together all those who want to learn more about the early transportation in the area, from the casual admirer to the dedicated researcher. Its aim is to collect and record information about Hugo's emigrant trails, especially its two historic 1850s General Land Office mapped roads of the Applegate Trail, and to share this information (e.g., through *Hugo History Day*, talks, hikes, group visits, training exercises, workshops, publications, web sites, etc.).

Karen Rose, Co-Project Leader  
Mike Walker, Co-Project Leader

### *Diaries, Journals & Reminiscences SubCommittee*

Karen Rose  
Janet McKy  
Kelly & Berneata Rarey  
Glen Campbell  
Norm Tieman  
Joe & Leta Neiderheiser  
Kristen Boyce  
Kathy Burkey  
Penny Shipley  
Mike Walker

### *General Land Office Field Survey SubCommittee*

Glen Campbell  
Jim & Rene Ford  
Joe Neiderheiser  
Kelly Rarey  
Mike Walker  
Chris Wytcherley

## Hugo Neighborhood Association & Historical Society's Mission

This information brochure is one of a series of documents published by the Hugo Neighborhood Association & Historical Society (*Hugo Neighborhood*). It is designed to be shared with neighbors for the purpose of helping protect our rural quality of life by promoting an informed citizenry in decision-making. The *Hugo Neighborhood* is an informal nonprofit charitable and educational organization with a land use and history mission of promoting the social welfare of its neighbors.

### Land Use & History

The *Hugo Neighborhood's* land use mission is to promote Oregon Statewide Goal 1 — Citizen Involvement, and to preserve, protect, and enhance the livability and economic viability of its farms, forests, and rural neighbors. It will act, if requested, as a technical resource assisting neighbors to represent themselves.

Its history mission is to educate, collect, preserve, interpret, and research its local history and to encourage public interest in the history of the Hugo area.

Volunteer membership dues are \$10.00 annually per family and normally used for paper, ink, envelopes, publications and mailings.

### *Hugo Neighborhood*

3388B Merlin Rd # 195, Grants Pass, Oregon 97526  
541-471-8271, Email: hugo@jeffnet.org

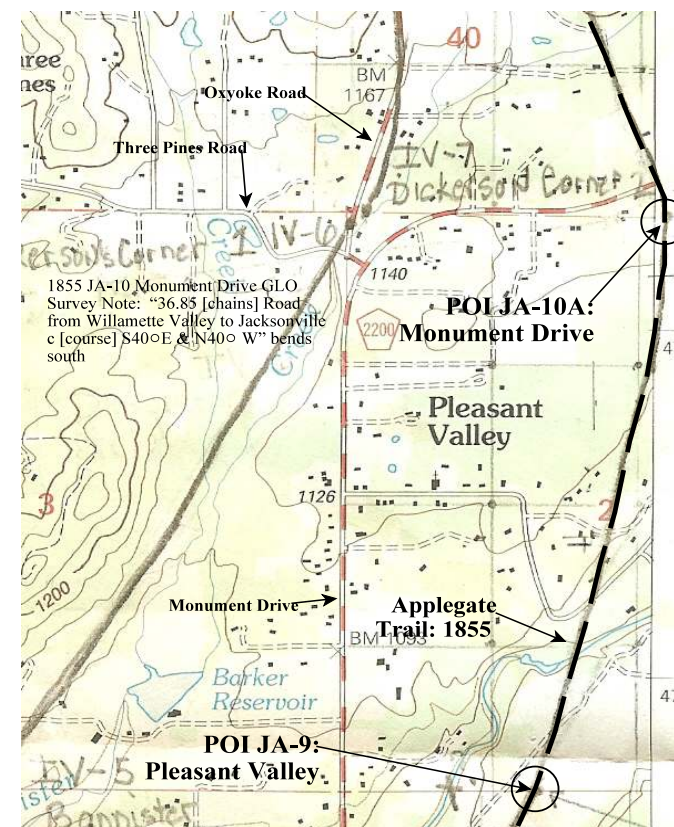
Web Page: <http://jeffnet.org/~hugo/>

Edited by Jean Boling, Jim Ford, Kelly Rarey, Karen Rose,  
Joe Neiderheiser, & Mike Walker

## JR Of Applegate Trail: Monument Drive (JA-10A)



Brochure 14A of Applegate Trail GLO  
Surveys Brochure Series



April 30, 2010

Hugo Emigrant Trails Committee  
Hugo Neighborhood Association &  
Historical Society  
Josephine County Historical Society