

Applegate Trail: Silvestri Property

The *Hugo Emigrant Trails Committee (Trails Committee)* was formed to bring together all those who want to learn more about the early transportation in the area, from the casual admirer to the dedicated researcher.¹

On August 20, 2003 three volunteers inventoried the Applegate Trail on the Silvestri Property: 2.03 acre Tax Lot 350602-CO-000800-80. Participants were property owner Gino Silvestri, Karen Rose, and Mike Walker. The Silvestri Property was investigated before the *Trails Committee* was aware of the Oregon-California Trails Association's "Mapping Emigrant Trails" standards.²



**Applegate Trail Ox Yoke Chain Artifact:
On Verified Class 3 Segment
OR-JA-00-35-06-2- Silvestri Property**

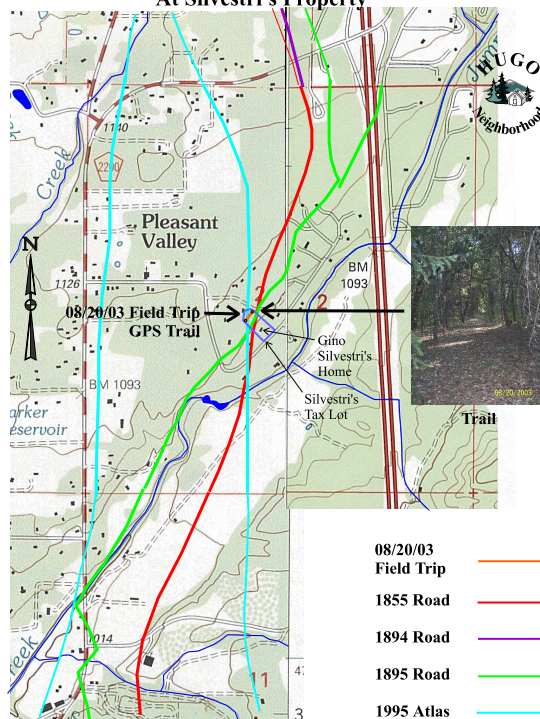
Three metal artifacts (parts of an ox yoke) were displayed by Silvestri that he and his father had found with a metal detector in the earth of the roadbed being investigated as the Applegate Trail.

Wagon Trail Inventory - OR-JA-00-35-06-2- Silvestri Property

The second field trip to the Silvestri trail site occurred August 11, 2004: Gino Silvestri, Karen Rose, Mike Walker, Wayne McKy, Hal Anthony, Jacque Hardwick, Blake Hardwick, Janet & Stephen McKy, Norbert Tieman, and Joe & Leta Neiderheiser.

Fix GPS AT G1 is at northeast end of road/wagon trail on Silvestri's property boundary (2.03 acres) off Red Mountain Drive, Grants Pass, Oregon.

Applegate Trail Field Trip: August 20, 2003 Pleasant Valley: Red Mountain Drive At Silvestri's Property



More Information

The trail is parallel to Jumpoff Joe Creek and in the northwest portion of the property. The general location matches several historical map locations of the Applegate Trail (1856, 1895, 1916, 1932, 1955, & 1995 atlas). It is above Jumpoff Joe Creek and approximately 25 feet above its first bench. Fix GPS AT G2 is at the middle of the trail segment on Silvestri's property. Fix AT G3 is at southwest end of trail on Silvestri's property boundary. It also matches the location of the "Approx. center line of Territorial Road Willamette to Jacksonville" on the Josephine County assessor map for Section 2, T.34S., R.6W., WM. The trail segment on the property varies from 10 - 13 feet wide and approximately 200 feet long.

In conclusion, more work needs to be done by the *Trails Committee* using the OCTA mapping standards (e.g., artifact search, review GLO field notes, field review by OCTA representatives, etc.).² An interim trail classification of Class 2 ② or Class 3 ③, Verified Trail, was recommended for trail segment OR-JA-00-35-06-2- Silvestri Property.

Be Respectful Do not trespass. The Silvestri Property is private property not open to the public.

Want more information? Contact an officer of the *Hugo Neighborhood*.

1. Hugo Neighborhood. 2005. Public Outreach & Educational Brochure Program: Hugo's Emigrant Trails. Hugo, OR.
2. Office of National Trails Preservation & Oregon-California Trails Association (P.O. box 1019, Independence, MO, 64051-0519, 816-252-2276, octa@indepmo.org). July 2002, 4th edition. *Mapping Emigrants Trails MET Field Manual*.

Hugo Neighborhood Association & Historical Society's Mission

This information brochure is one of a series of documents published by the Hugo Neighborhood Association & Historical Society (*Hugo Neighborhood*). It is designed to be shared with neighbors for the purpose of helping protect our rural quality of life by promoting an informed citizenry in decision-making. The *Hugo Neighborhood* is an informal nonprofit charitable and educational organization with a land use and history mission promoting the social welfare of its neighbors.

Land Use & History

The *Hugo Neighborhood's* land use mission is to promote Oregon Statewide Goal 1 — Citizen Involvement, and to preserve, protect, and enhance the livability and economic viability of its farms, forests, and rural neighbors. It will act, if requested, as a technical resource assisting neighbors to represent themselves.

Its history mission is to educate, collect, preserve, interpret, and research its local history and to encourage public interest in the history of the Hugo area.

Volunteer membership dues are \$10.00 annually per family and normally used for paper, ink, envelopes, publications and mailings.

Email: hugo@jeffnet.org
Web Page: <http://jeffnet.org/~hugo/>
Project Leader: Karen Rose
Edited by Jean Boling, Kelly Rarey,
Karen Rose, & Mike Walker

HNA&HS Officers

Wayne McKy, Chair
6497 Hugo Road
Grants Pass, Oregon 97526

Mike Walker, Education Chair
3388B Merlin Rd #195
Grants Pass, Oregon 97526

Hal Anthony, Outreach Chair
3995 Russell Road
Grants Pass, Oregon 97526

Jacqueline Hardwick, Treasurer
885 Red Mountain Drive
Grants Pass, Oregon 97526

Karen Rose, Web Master
575 Red Mountain Drive
Grants Pass, Oregon 97526

Ann Lyneis, Secretary
5100 Tunnel Loop Road
Grants Pass, Oregon 97526

Brochure13B in Emigrant Trails Brochure Series - HNA&HS 2005 - 23
C:\Documents and Settings\mike\My Documents\Genealogy\Applegate Trail
GLO Surveyed Points\JA9 Pleasant Valley\BROCHURE 13B JA Silvestri
Property 021805.wpd

APPLEGATE TRAIL: SILVESTRI PROPERTY

OR-JA-00-35-06-2- Silvestri Property



Brochure 13B in
Emigrant Trails Series



*Applegate Trail Inventory -
Red Mt Drive:
Gino Silvestri & Karen Rose*

February 18, 2005

**Hugo Emigrant Trails Committee
Hugo Neighborhood Association &
Historical Society
Josephine County Historical Society**