

## Jacksonville Road (JR) Of Applegate Trail (Trail): Pleasant Valley (JA-9)<sup>1</sup>

**Hugo's Jacksonville Road (JA) from Willamette Valley to Jacksonville** (route of the Applegate Trail) is located in Josephine County, Oregon from Louse Creek in the south to Grave Creek in the north. There are 17 GLO surveyed points of interest (POI) along the JR in Hugo's area of interest.<sup>2</sup>

### PLEASANT VALLEY POI

**Road POI Name** Pleasant Valley<sup>3</sup> ■ JA-9.

**POI ID Code** OR-AT-00-35-06-02/11-W-JA-09.

**GLO Survey Notes for POI** Page 24. Subdivisions of Township N<sub>0</sub> 35 South of Range N<sub>0</sub> 6 W, West on True Line Between Secs 2 & 11.

### Chains

43.50 Enter Prairie & Bank bottom  
**54.00 Road to Jacksonville** c NE & SW  
[54.00 chains = 3,564 feet]  
60.00 leave Prairie & Enter trees NW & SE

### Latitude & Longitude of POI Calculated<sup>3</sup>

42° 32' 59.0" North Latitude  
123° 22' 42.5" West Longitude

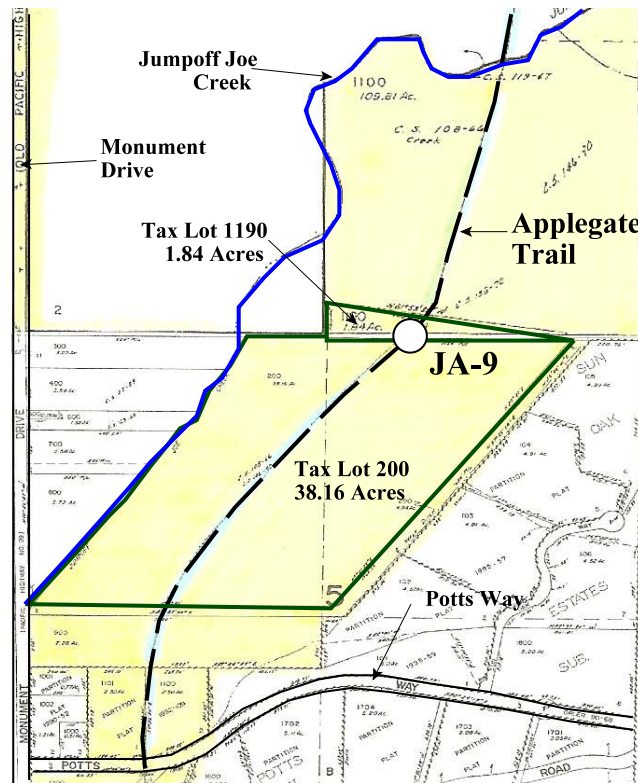
**POI Located With GPS** Not yet; with permission.

**Interpretative Sign; Metal Detection Work** Not yet; with permission.

1. Hugo Neighborhood. 2009 *Hugo's Applegate Trail GLO Points of Interest*. Brochure 1 in Applegate Trail GLO Surveys Series. Hugo, OR.  
2. Hugo Neighborhood. 2009 *Hugo's Jacksonville Road Of Applegate Trail Points of Interest*. Brochure 2 in Applegate Trail GLO Surveys Series. Hugo, OR.

## Diaries, Journals, & Reminiscences<sup>1</sup>

**Patents** JA-9 is located on the south boundary of the Walker donation land claim (DLC) and the northern boundary of the Abraham cash entry.



**1855 Wesley Walker DLC** The DLC patent 699 was issued by President Andrew Johnson and became final March 1, 1855.

## General Land Office (GLO) Surveys & Maps<sup>1</sup>

**1865 Solomon Abraham Cash Entry** Solomon purchased 160 acres under Cash Entry No. 662 in Josephine County, Oregon. It was issued August 15, 1865 to Solomon Et. Al. Abraham (April 24, 1820: Sale-Cash Entry (3 Stat. 566)). This is the earliest cash entry sale in Hugo, except for the year before by Samuel Trimble. Both purchases were on the newly developed Applegate Trail.

**Ownership** JA-9 is located on two parcels of private property (see stakeholders).

**Stakeholders** Anthony & Rosemarie Farrugia  
Tax Lot 1190 (1.84 ac), Sec. 2, T.35S., R.6W., W.M.  
Tax Lot 200 (38.16 ac), Sec. 11B, T.35S., R.6W., W.M.

**OCTA Trail Classification** Class ③ or Class ④  
Verified Trail.

**Coherence Rule** Linear Uniformity. Yes  
**Corroborative Rule** Confirming Evidence. Yes  
**Collateral Rule** Physical/Topo Evidence. No  
**Correlation Rule** Overall Agreement. Yes

**Be Respectful** *Do not trespass. JA-9 is located on private property not open to the public.*

**Want more information?** Contact the *Hugo Neighborhood* on how you can become involved in land use and history in the Hugo community.

3. 1856 General Land Office Field Survey Sub-Committee, Hugo Emigrant Trails Committee, Hugo Neighborhood Association & Historical Society. February 10, 2006. *General Land Office Field Survey Notes: Hugo's Applegate Trail Segments*. Hugo, OR.

## Hugo Emigrant Trails Committee

Hugo is blessed with a rich heritage of historic roads, rough though they were. The *Hugo Emigrant Trails Committee* was formed to bring together all those who want to learn more about the early transportation in the area, from the casual admirer to the dedicated researcher. Its aim is to collect and record information about Hugo's emigrant trails, especially its two historic 1850s General Land Office mapped roads, and to share this information (e.g., through *Hugo History Day*, talks, hikes, group visits, training exercises, workshops, publications, web sites, etc.).

Karen Rose, Co-Project Leader  
Mike Walker, Co-Project Leader

### *Diaries, Journals & Reminiscences SubCommittee*

Karen Rose  
Janet McKy  
Kelly & Berneata Rarey  
Glen Campbell  
Norm Tieman  
Joe & Leta Neiderheiser  
Kristen Boyce  
Kathy Burkey  
Penny Shipley  
Mike Walker

### *General Land Office Field Survey SubCommittee*

Glen Campbell  
Jim & Rene Ford  
Joe Neiderheiser  
Kelly Rarey  
Mike Walker  
Chris Wytcherley

Brochure 13 of Applegate Trail Brochure Series  
C:\Documents and Settings\mike\My Documents\Genealogy\Applegate Trail  
GLO Surveyed Points\JA9 Pleasant Valley\BROCHURE 13 JA Pleasant  
Valley\_JA9 030710.wpd

## Hugo Neighborhood Association & Historical Society's Mission

This information brochure is one of a series of documents published by the Hugo Neighborhood Association & Historical Society (*Hugo Neighborhood*). It is designed to be shared with neighbors for the purpose of helping protect our rural quality of life by promoting an informed citizenry in decision-making. The *Hugo Neighborhood* is an informal nonprofit charitable and educational organization with a land use and history mission of promoting the social welfare of its neighbors.

### Land Use & History

The *Hugo Neighborhood's* land use mission is to promote Oregon Statewide Goal 1 — Citizen Involvement, and to preserve, protect, and enhance the livability and economic viability of its farms, forests, and rural neighbors. It will act, if requested, as a technical resource assisting neighbors to represent themselves.

Its history mission is to educate, collect, preserve, interpret, and research its local history and to encourage public interest in the history of the Hugo area.

Volunteer membership dues are \$10.00 annually per family and normally used for paper, ink, envelopes, publications and mailings.

### *Hugo Neighborhood*

3388B Merlin Rd # 195, Grants Pass, Oregon 97526  
541-471-8271

Email: [hugo@jeffnet.org](mailto:hugo@jeffnet.org)

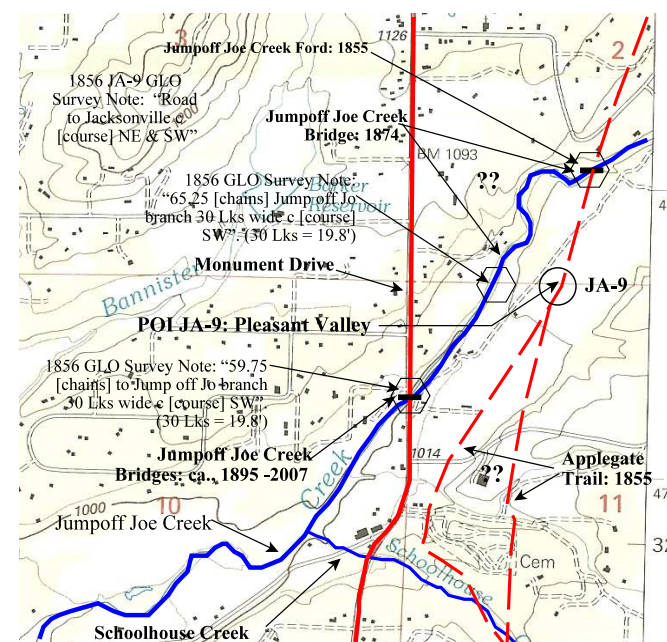
Web Page: <http://jeffnet.org/~hugo/>

Edited by Jean Boling, Kelly Rarey,  
Karen Rose, & Mike Walker

## JR Of Applegate Trail: Pleasant Valley (JA-9)



Brochure 13 of Applegate Trail GLO  
Surveys Brochure Series



1855 GLO JA-9: Pleasant Valley

March 7, 2010

**Hugo Emigrant Trails Committee  
Hugo Neighborhood Association &  
Historical Society  
Josephine County Historical Society**