

Aerial Photographs I

Applegate Trail Signage Project



**Hugo Emigrant Trails Committee
Hugo Neighborhood Association & Historical Society**



**Karen Rose, Member
Diaries, Journals & Reminiscences Sub-Committee
Hugo Emigrant Trails Committee
Hugo Neighborhood Association & Historical Society**

**Mike Walker, Member
Diaries, Journals & Reminiscences Sub-Committee
Hugo Emigrant Trails Committee
Hugo Neighborhood Association & Historical Society**

**Jon Whalen, StoryTeller
Hugo Storytelling Committee
Hugo Neighborhood Association & Historical Society**

September 18, 2014

Applegate Trail Signage Project

Outline

I. PROJECT DESCRIPTION

- A. Hugo Emigrant Trails Committee
- B. Harris Cabin and Donation Land Claim & Grave Creek Hills Pass Signage
- D. Funding
- E. Summary

II. REFERENCES & RESOURCES

- A. Resource Teams
 - 1. Hugo Emigrant Trails Committee
 - Hugo Neighborhood Association & Historical Society
 - a) General Land Office Field Survey Sub-Committee
 - b) Diaries, Journals & Reminiscences Sub-Committee
 - 2. Hugo's Native American Team
- B. Applegate Trail
 - 1. History & Applegate Trail Inventory
 - 2. Diaries, Journals, & Letters: Applegate Trail Inventory
- C. Applegate Trail Points of Interest (POIs) References & Resources
 - 1. History & Applegate Trail Inventory
 - 2. Points of Interest for Applegate Trail Brochure Series, Including Surveyed General Land Office
 - 3. Applegate Trail Fords
- D. Lowland Takelma
 - 1. History
 - 2. Hugo Native American Program
 - 3. Francis Johnson, Lowland Takelma Indian, Stories by Sapir in 1907 and Harrington in 1933.
 - 4. Maps
- E. Papers
- F. Harris Family & Donation Land Claim
- G. Select Educational Brochures: Harris Cabin and DLC & Mt. Sexton Pass
- H. Appendices
- I. Summary

III. POTENTIAL QUOTES: DIARIES, JOURNALS, OR REMINISCENCES

- A. Manzanita Rest Area Interpretive Signage
 - 1. Applegate Trail: 1846 - 1883
 - 2. Harris Cabin: Donation Land Claim On Applegate Trail
 - 3. Lowland Takelma First Citizens

- B. Mt. Sexton Pass & Applegate Trail Crossing Signage
 - 1. Applegate Trail At Mt. Sexton Pass: 1846 - 1883
 - 2. Grave Creek Hills Pass
 - 3. Lowland Takelma Indian Trail & Rock Old Woman At Pass
- C. Summary

IV. BRAINSTORMING: APPLGATE TRAIL SIGNAGE PROJECT RECOMMENDED TEXT ALTERNATIVES

- A. Preferred Text Alternatives
 - 1. Manzanita Rest Area Interpretive Signage
 - . Applegate Trail: 1846 - 1883
 - . Harris Cabin: Donation Land Claim On Applegate Trail
 - . Lowland Takelma First Citizens
 - 2. Mt. Sexton Pass & Applegate Trail Crossing Signage
 - . Applegate Trail At Mt. Sexton Pass: 1846 - 1883
 - . Grave Creek Hills Pass
 - . Lowland Takelma Indian Trail & Rock Old Woman At Pass
- B. Expanded Text Alternatives
 - 1. Manzanita Rest Area Interpretive Signage (IV.A.1)
 - 2. Mt. Sexton Pass & Applegate Trail Crossing Signage (IV.A.2)
- C. Additional Text Alternatives
- D. Summary

V. SUMMARY

MAPS

PHOTOGRAPHS

Photographs: I OF II

Photographs: II OF III

Photographs: III OF III

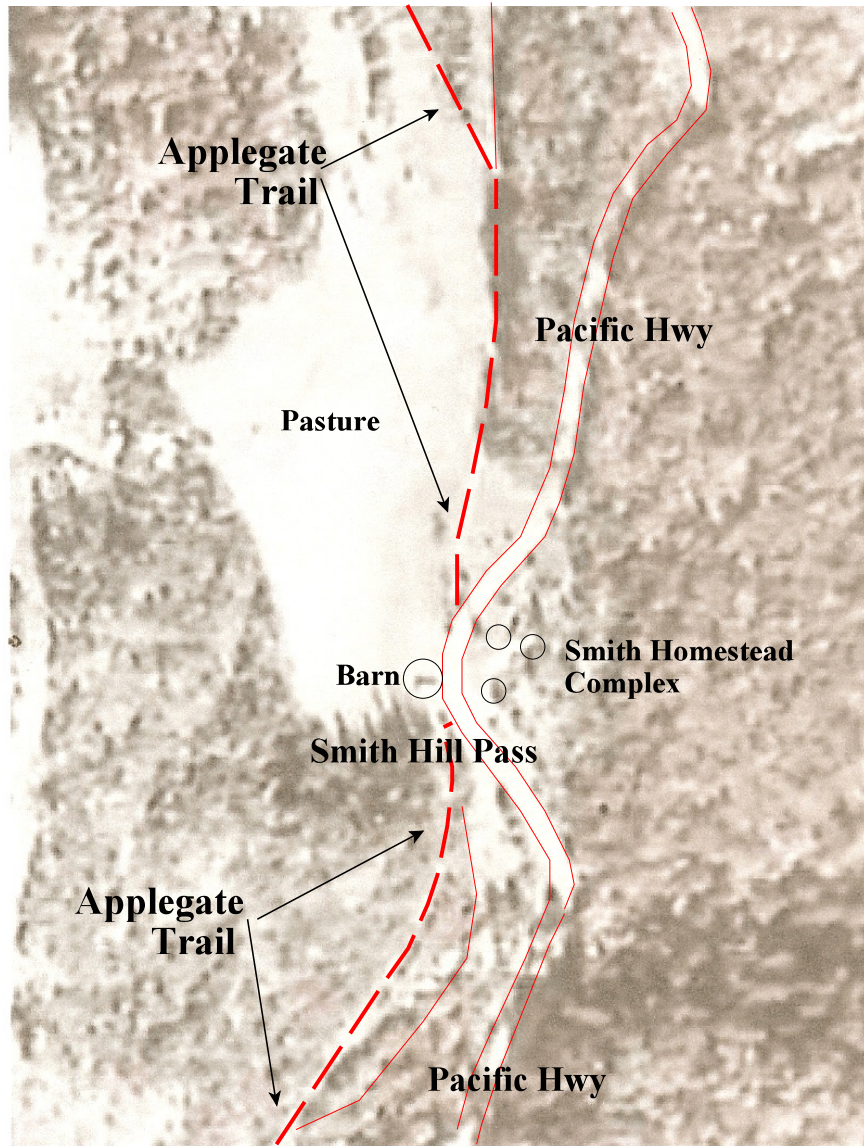
AERIAL PHOTOGRAPHS

- Aerial Photo 1. Smith Hill Pass With Geographic Features: 1939
- Aerial Photo 2. Sexton Mt. Pass: 1959

Aerial (A) Photographs I

Applegate Trail Signage Project

Aerial Photo 1. Smith Hill Pass With Geographic Features: 1939



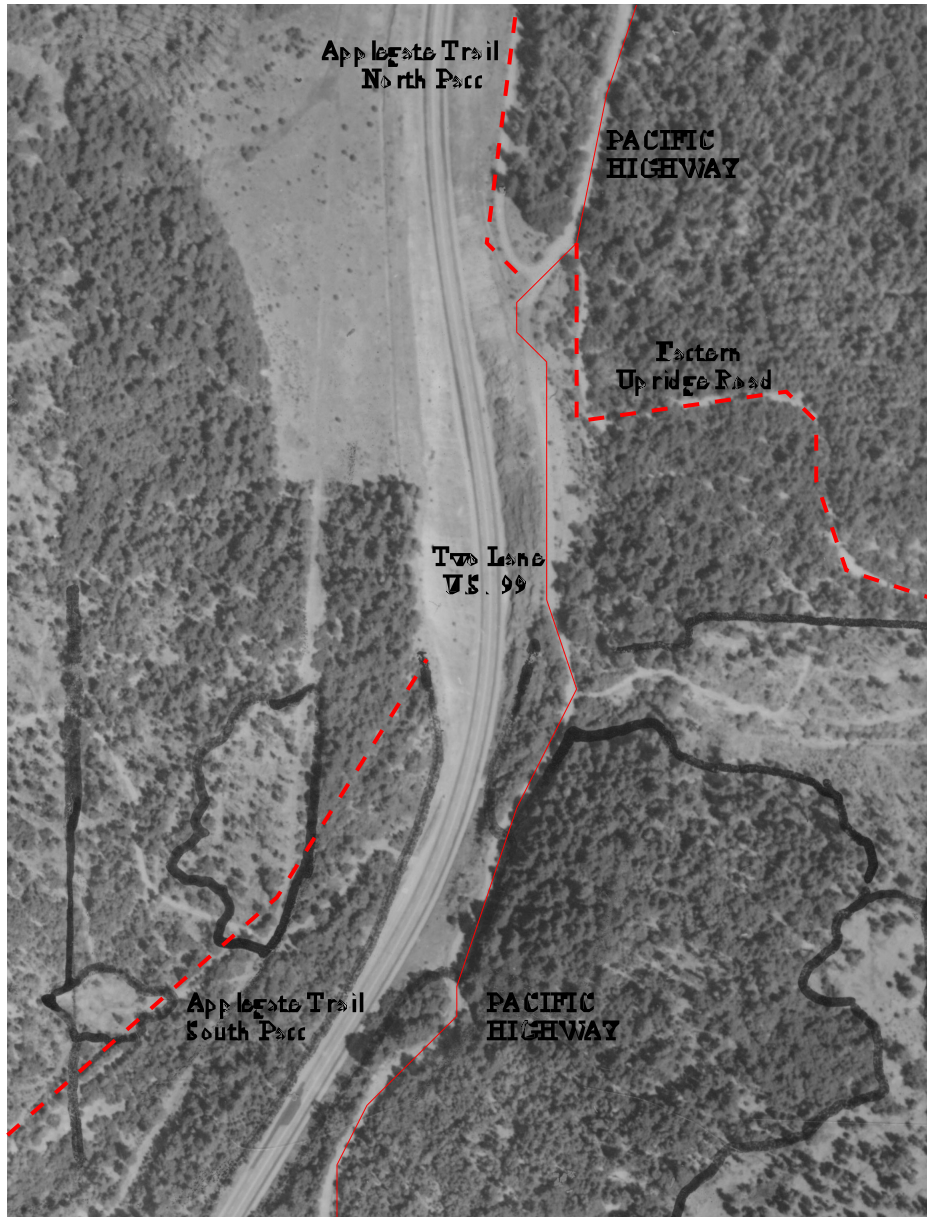
Aerial Photo 1. Smith Hill Pass With Geographic Features: 1939
Base Aerial Courtesy of Oregon Department of Water Resources

Source of Aerial Photo 1. Hugo Emigrant Trails Committee. December 28, 2011. *Smith Hill Pass: 1940*. Authors Malcolm Drake, Kelly Rarey, & Mike Walker, Members of GLO Field Review SubCommittee, HETC, HuNAHS. Maps & Aerial Photos. Hugo, OR.

Aerial (A) Photographs I

Applegate Trail Signage Project

Aerial Photo 2. Sexton Mt. Pass: 1959



Aerial Photo 2. Sexton Mt. Pass: 1959
Courtesy of BLM

Source of Aerial Photo 1. Hugo Emigrant Trails Committee. December 28, 2011. *Smith Hill Pass: 1940*. Authors Malcolm Drake, Kelly Rarey, & Mike Walker, Members of GLO Field Review SubCommittee, HETC, HuNAHS. Maps & Aerial Photos. Hugo, OR.