

APPENDIX F. AUGUST 21, 2012 MINUTES: “APPLEGATE TRAIL I (ATI) NORTH SEXTON PASS I-5 EAST” FIELD TRIP

Yellow Metal Location K-Tag Field Trip



Hugo Emigrants Trails Committee (HETC)
Josephine County Historical Society
Hugo Neighborhood Association & Historical Society

August 21, 2012

I. PURPOSE

The purpose of the trip was to field investigate the Applegate Trail (*Trail*) site at the physical *Trail/Road* per the *Applegate Trail I North Sexton Pass I-5 East: I* paper.¹ Maps of the ATI can be found at the web location per the ATI paper and the *Telegraph Lines and Applegate Trail at Smith Hill Pass* paper.² The specific purpose was to continue investigating a yellow metal location K-Tag that Larry and Bridget McStravog had previously discovered about a 1/4 mile north of the gate just east of the paved 1920 - 1921 Pacific Highway.

The “*Applegate Trail I North Sexton Pass I-5 East: I*” publication was preliminary and it was planned that it would be updated with “*Applegate Trail I North Sexton Pass I-5 East: II*” in the sense of incorporating later research and field pedestrian surveys by the GLO Field Survey Subcommittee, HETC.³ This field trip’s purpose is to continue collecting information about the ATI for the updated paper.

The archaeological technique of pedestrian survey, also called surface survey or reconnaissance survey, involves walking the surface of an archaeological site or large region in stratified patterns, and either marking the location of identified artifacts, or collecting a sample for further investigation.



Photo 1. Larry McStravog At Two Pin K-Tag & S.H.R.W. Metal Post

II. PARTICIPANTS

Larry McStravog and Mike Walker visited the ATI area on August 21, 2012 from 11:45 a.m. to 2:30 p.m. (Appendix A). They parked at the old U.S. Weather Bureau parking area concrete pad off the old Pacific Highway at the Sexton Mountain Summit.



Photo 2. Yellow Metal Location K-Tag

III. BACKGROUND

A. August 12, 2012 Field Trip

The HETC had previously identified the 1,060' segment of the *Trail* identified as “*Applegate Trail I North Sexton Pass I-5 East*” (i.e., Sexton Mountain Pass in south to Applegate Trail site near I-5 sign in north) to be the old emigrant Applegate Trail as it evolved into a wagon road on top of the original Indian Trail.

On August 12, 2012 Larry McStravog, Member of the GLO SubCommittee, was showing his wife, Bridget, the 1,060' segment of the *Trail*. He and Bridget were also looking for horse access along the old 1920 - 1921 paved Pacific Highway from the Hugo to the Sunny Valley side.

They found the motorcycle pathway from approximately the historical post on the 1,060' segment of the *Trail* to where it intersected the Pacific Highway to the east. From there they went further north to where the Pacific Highway was obliterated by the I-5 cut. In about this location Larry discovered some metal State Highway Right-of-way signs (S.H.R.W.). He followed them south to another S.H.R.W. post next to a yellow metal location Medite Corporation tag.

These yellow metal location tags are called K-Tags. K-Tags are little placards placed, if you are lucky, along the roads or trails so that a surveyor or knowledgeable person can determine from the information on this placard the location of Section Corners, 1/4 corners and 1/16 corners. K-Tags are generally yellow and have a township drawn on it with the sections numbered. Data is scratched on the metal plate with a scribe or knife giving the township, range and distance and direction to the marker. So this little tag is very helpful.



Photo 3. Mike Walker & Tia At S.H.R.W. Metal Post

B. August 15, 2012 Office Work

Larry shared his K-Tag discovery with Mike Walker as the GLO SubCommittee was looking for local monuments in the vicinity of the 1,060' for the purpose of local bearing and distance work.

They reviewed the Josephine County Assessor Office data for possible monuments and owners of land. They knew they were in Section 23, T.34S., R.6W., W.M.(Map 1).

Josephine County Assessor Maps
<http://www.ormap.net/flexviewer/index.html>

The Josephine County Assessor Maps' link took you to Oregon Maps at <http://www.ormap.net/flexviewer/index.html>. From Oregon Maps they found Josephine County and Section 23, T.34S., R.6W., W.M. which could be viewed three ways: 1. Aerial Photo, 2.

Streets, and 3. Topographical. Tax Lot 200 had an odd shaped western boundary that generally was adjacent to and east of the old Pacific Highway.



The aerial photo at Oregon Maps showed that Tax Lot 200 had been harvested, perhaps in 1998 (Aerial 1). It also looked like the K-Tag represented the northwestern corner of Tax Lot 200 (Map 1 & Map 2).

Josephine County Assessor Office
Property Search
<http://www.co.josephine.or.us/SectionIndex.asp?SectionID=103>

There were two types of property searches that could be conducted (i.e., Situs by street name and MTL by Township, Range, Section, QQ, Taxlot). A MTL search for Tax Lot 200, Section 23, T.34S., R.6W., W.M. (34-06-23-00-000200) yielded Perpetua Forests Company as the property owner (Map 2).

Photo 4. Two Pin Monuments, Including Hull Monument No. RS 901

Perpetua Forests Company
74 Acre Tax Lot 200, Section 23, T.34S., R.6W., W.M.
PO Box 519
Cave Junction, Oregon
97523-0519
(Situs: Old Highway 99 North)

The GLO SubCommittee needs to quality control the following, but it appears the Hog House location in the junction of the "Eastern Upridge Road" is located on lands administered by

ODOT (see assessor map and *Map 2. Old Smith Homestead At Smith Hill Pass: 1940* at http://www.hugoneighborhood.org/Map%202_Old%20Smith%20Homestead%20At%20Smith%20Hill%20Pass%201940.pdf).

IV. FIELD INVENTORY

A. 1st K-Tag & Two Pins Monument

On August 21, 2012 Larry and Mike went to find the K-Tag and, hopefully, the associated monument. They walked in past the gate on the old paved Pacific Highway and after about 1/4 mile found the K-Tag on a bearing tree with its associated ribbons just east of the highway about 150' uphill next to a S.H.R.W. post (Photo 1 & Photo 3).

A yellow metal surveyor K-Tag was on the bearing tree; it read: T.34S., R.6W., Section 23 (Photo 2; Map 2). It showed an "x" on a figure of a section. The "x" was on the north boundary of forty acres described as the NE 1/4, of the NW 1/4, of Section 23. In total the information on the sign is as follows.

T.34S., R.6W., Section 23.

[figure of Section 23] "x" on north boundary 40 acres described as the NE 1/4, of the NW 1/4. "2 pins" was scratched on the K-Tag.

CORNER IS: "8' 9""; HOW LOCATED [no information]; "BY TH" [Hull].

DIRECTION: "N12" E from bearing tree"; LINE IS: "-----"; DATE: "1998".

Two monument pins (Photo 4) were found in the ground 8' 9" 12 degree true from the K-Tag bearing tree in line with the S.H.R.W. post. One of the pins had a yellow cap on it with surveyor Max H. Hull identified (i.e., Hull RS 901; Photo 5). Larry and Mike figured that Hull did not like the location of the previous monument and placed his own next to the one he found.



Photo 5. Hull Monument No. RS 901

Max H. Hull Land Surveying
License Number 00901PLS
231 NW B Street
Grants Pass, Oregon
541-476-2425

Oregon State Board of Examiners for Engineering and Land Surveying
Find a Licensee: http://cms.oregon.gov/Osbeels/Pages/Search_License.aspx
PLS stands for Professional Land Surveyor

Future work is to travel to the Josephine County Surveyor's Office and locate the 1998 Hull survey that goes with the K-Tag and the two pins (i.e., monuments). The goal was that this

research would result in the discovery of another monument closer to the 1,160' segment of the *Trail*.

B. 2nd K-Tag & One Pin Monument

When they were back at Larry's pick-up they talked about their trip and the next step to the Josephine County Surveyor's Office. At some point Larry noticed some ribbons to the east in the brush past the old U.S. Weather Bureau sign embedded in the oak tree. Larry's curiosity got the best of him and pretty soon he was in the poison oak and brush going to the back side of the ribbons. Gold dust!

Larry found another K-Tag (Photo 6; Map 2). Soon Larry and Mike were finding another Hull monument (Photo 7; Map 2; Aerial 1).



Photo 6. Larry McStrovag At One Pin K-Tag

T.34S., R.6W., Section 23.
[figure of Section 23] "x"
scratched on the K-Tag.

CORNER IS: "5'"; HOW
LOCATED [no information];
"BY TH" [Hull].
DIRECTION: "S10" W from
bearing tree"; LINE IS: "-----
---"; DATE: "1998".

This discovery is just outstanding. Now the GLO SubCommittee will be able to perform bearing and distance work on the 1,160' segment of the *Trail* from a very close known on-the-ground-location.

August 27, 2012 Supplemental Walker found Josephine County Survey (C.S.) 103-95 in the Josephine County Surveyor's Office (Max H. Hull Surveying, License Number 00901PLS. C.S. 103-95. October 27, 1995. For Oregon Department of Transportation. Grants Pass, OR). Map 3 is the NW 1/4 of Section 23, T.34S., R.6W., of C.S. 103-95 which is also the John S. Smith 160-acre homestead. Of significance is that the survey identifies the U.S. Weather Service's metal shed which was still there in 1995. Today the shed's concrete foundation is left.

On of the 2-pins is a 5/8" iron rod with a yellow plastic cap (see Photo 4) marked "Hull 901" (the 1-pin monument is also a 5/8" iron rod with yellow Hull 901 plastic cap - Photo 7).

V. MINUTES

Minutes were recorded by Mike Walker September 5, 2012.

Mike Walker, Minutes Secretary & Member
GLO Field Survey SubCommittee
Hugo Emigrant Trails Committee
Hugo Neighborhood Association & Historical Society
3388B Merlin Rd #195
Grants Pass, Oregon 97526
541-471-8271
Email: hugo@jeffnet.org
Web Page: <http://www.hugoneighborhood.org/>

Minutes were reviewed and edited by the following participating members of the Hugo Emigrant Trails Committee (HETC): Larry McStravog and Mike Walker (Appendix A), and Karen Rose, Co-Project Leader, HETC..

Footnotes

HETC's Web Published Applegate Trail Inventories at:
http://www.hugoneighborhood.org/miscellaneous_research_papers_and_documents.htm

1. Walker, M., Rarey, K., & Rose, K. January 30, 2012. *Applegate Trail I North Sexton Pass I-5 East: I*. For Hugo Neighborhood Association & Historical Society. Hugo, OR.
http://www.hugoneighborhood.org/NORTH_SEXTON_PASS_PAPER_I_013012.pdf

2. Boling, Rarey, Rose, & Walker. February 22, 2012. *Telegraph Lines and Applegate Trail at Smith Hill Pass*. For Hugo Neighborhood Association & Historical Society & Josephine County Historical Society. Hugo, OR.
http://www.hugoneighborhood.org/TELEGRAPH_LINES_&_TRAIL_PAPER_022212.pdf

3. *Applegate Trail I North Sexton Pass I-5 East: II*
http://www.hugoneighborhood.org/miscellaneous_research_papers_and_documents.htm

Photographs

K-Tag & Monument Photos

- Photo 1. Larry McStrovag At Two Pin K-Tag & S.H.R.W. Metal Post
- Photo 2. Yellow Metal Location K-Tag
- Photo 3. Mike Walker & Tia At S.H.R.W. Metal Post
- Photo 4. Two Pin Monuments, Including Hull Monument No. RS 901
- Photo 5. Hull Monument No. RS 901
- Photo 6. Larry McStrovag At One Pin K-Tag
- Photo 7. One Pin Monument - Hull Monument No. RS 901

Maps

- Map 1. Section 23, T.34S., R.6W., W.M.
- Map 2. Tax Lot 200, Section 23, T.34S., R.6W., W.M.
- Map 3. Josephine County Survey: C.S. 103-95 - NW 1/4 of Section 23, T.34S., R.6W.

Aerials

- Aerial 1. Tax Lot 200, Section 23, T.34S., R.6W., W.M., Google 2010

Appendix A. August 21, 2012 Participants: GLO Field Survey Subcommittee Members

Larry McStravog, Member
GLO Field Survey Subcommittee
Hugo Emigrant Trails Committee
201 Hitching Post Rd.
Grants Pass, Or. 97526
541-479-3684

Mike Walker, Member
GLO Field Survey Subcommittee
Hugo Emigrant Trails Committee
3388B Merlin Rd #195
Grants Pass, Oregon 97526
541-471-8271



*Photo 7: One Pin Monument -
Hull Monument No. RS 901*

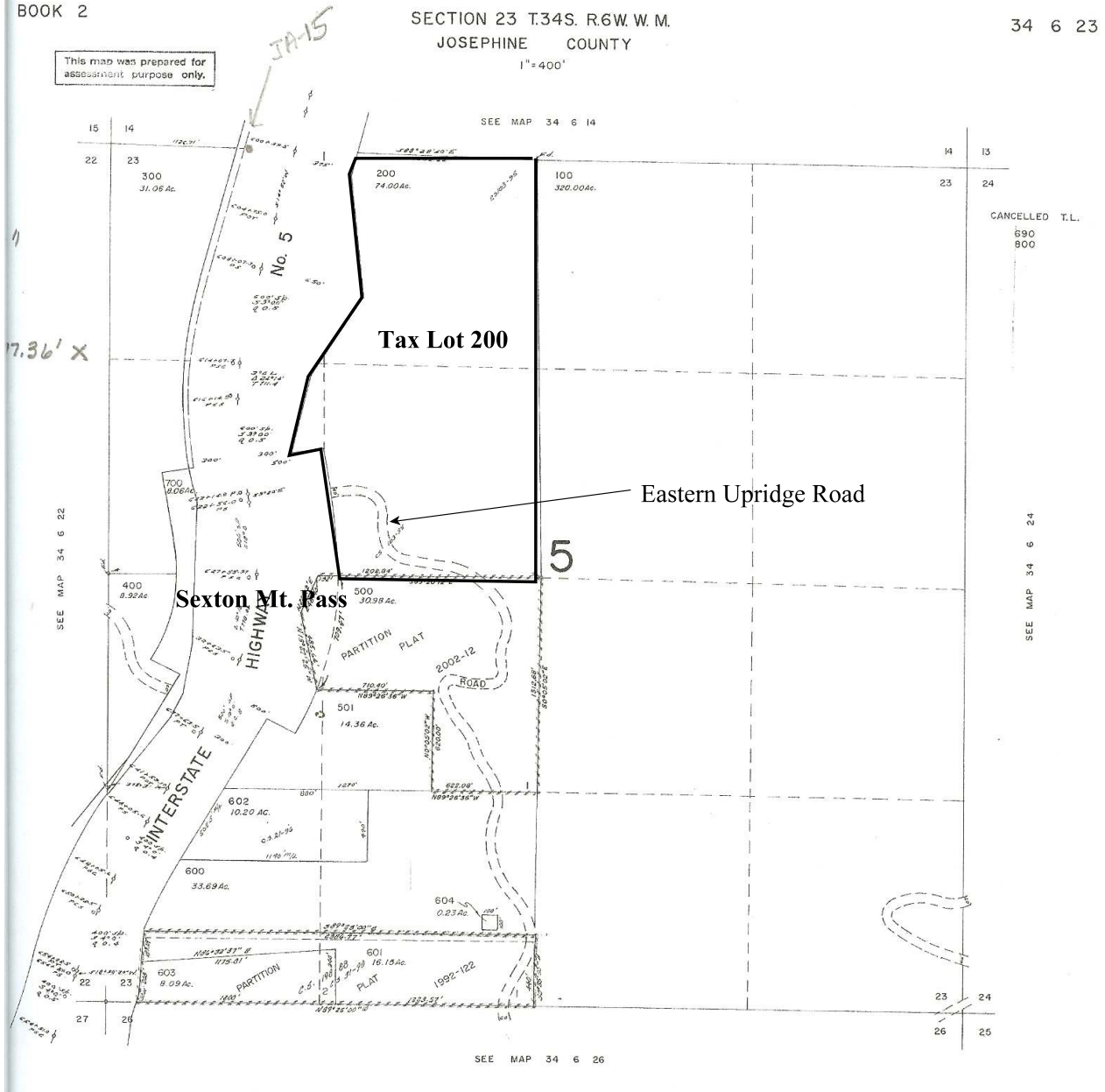
Map 1. Section 23, T.34S., R.6W., W.M.

BOOK 2

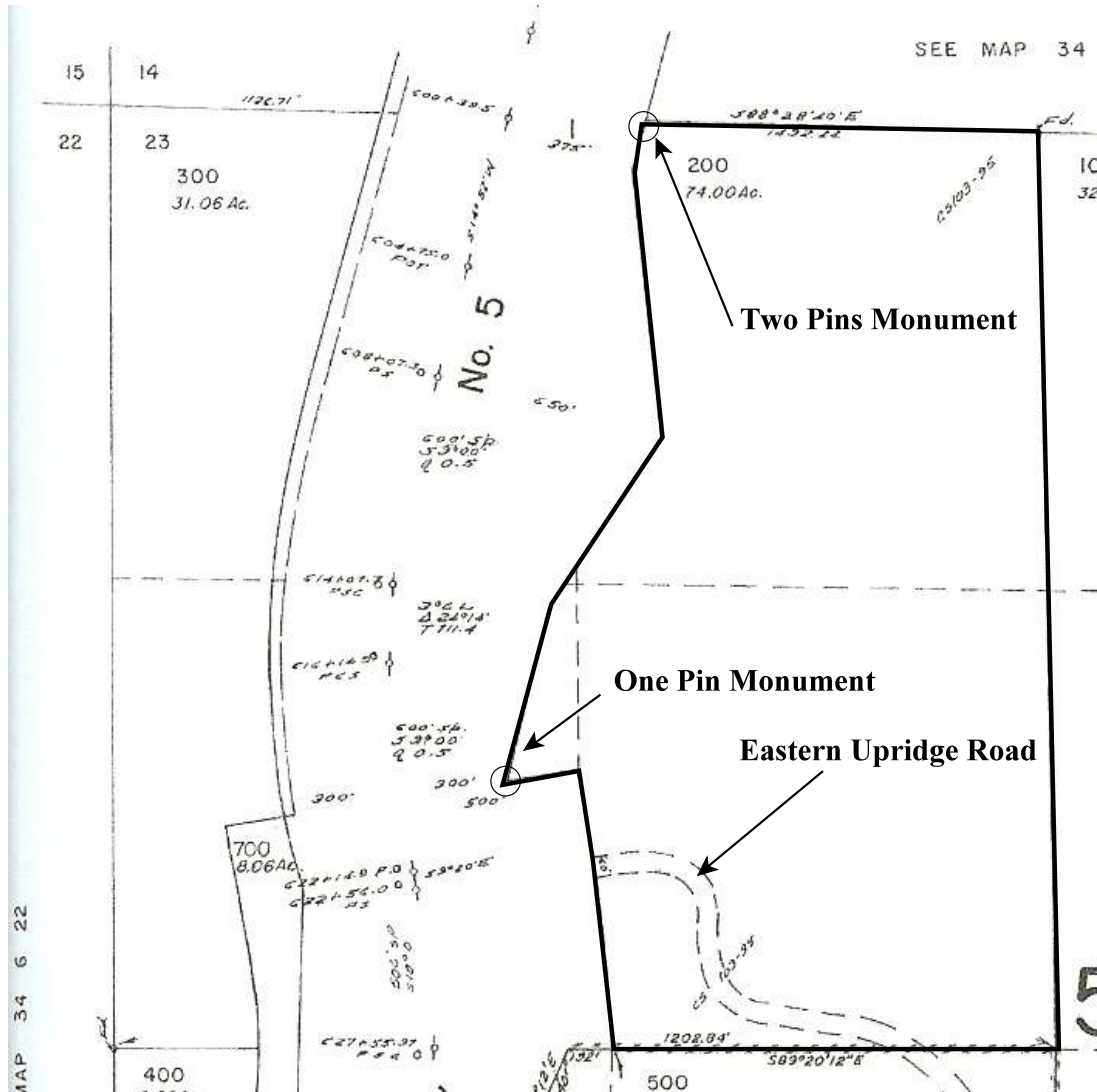
SECTION 23 T.34S. R.6W. W.M.
JOSEPHINE COUNTY
1" = 400'

34 6 23

This map was prepared for
assessment purpose only.



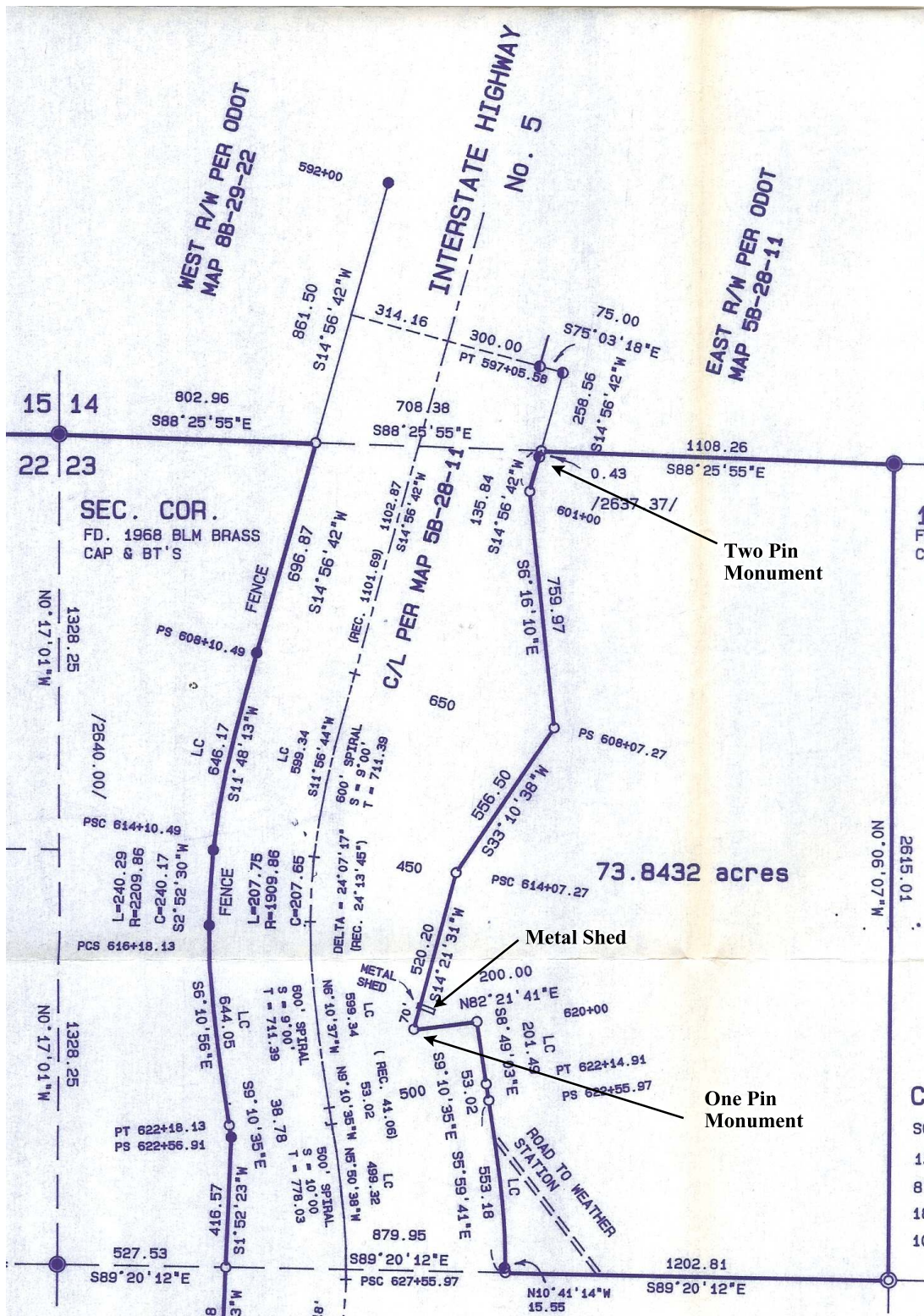
Map 2. Tax Lot 200, Section 23, T.34S., R.6W., W.M.



One of the Two Pins Monument is a 5/8" iron rod with a yellow plastic cap (see Photo 4) marked "Hull RS 901" (the 1-pin monument is also a 5/8" iron rod with yellow Hull RS 901 plastic cap - Photo 7).

The GLO Subcommittee needs to quality control the following, but it appears the Hog House location in the junction of the "Eastern Upridge Road" is located on lands administered by ODOT (see assessor map and *Map 2. Old Smith Homestead At Smith Hill Pass: 1940* at http://www.hugoneighborhood.org/Map%202_Old%20Smith%20Homestead%20At%20Smith%20Hill%20Pass%201940.pdf).

Map 3. Josephine County Survey: C.S. 103-95 - NW 1/4 of Section 23, T.34S., R.6W.



Map 3 Legend

Josephine County Survey: C.S. 103-95 - NW 1/4 of Section 23, T.34S., R.6W.

Note: The first symbol identified as 'SET 5/8" X 30" IRON ROD WITH YELLOW PLASTIC CAP MARKED "HULL AS 901"' is actually identified as a single circle on the survey.

LEGEND

⊙	SET 5/8" X 30" IRON ROD WITH YELLOW PLASTIC CAP MARKED "HULL RS 901"
●	FOUND IRON MONUMENTS AS NOTED
[]	RECORD DISTANCE PER CS 109-69
()	RECORD DISTANCE PER CS 30-91
/ /	RECORD DISTANCE PER G.L.O.
—	TRUE LINE SURVEYED AND MARKED WITH BLAZED TREES, YELLOW & ORANGE FLAGGING AND 36" LATHS.

BASIS OF BEARING PER CS 30-91

SCALE: 1" = 400'

OCTOBER 20, 1995

SURVEY NARRATIVE IS A SEPERATE DOCUMENT

●	FOUND 5/8" IRON RODS ODOT R/W MAP 5B-28-11 UNLESS OTHERWISE NOTED
●	FOUND 5/8" IRON RODS ODOT R/W MAP 8B-29-22

NOTE: WEST R/W LINE HAS A STANDARD ODOT FENCE RUNNING LENGTH OF PROPERTY

Aerial 1. Tax Lot 200, Section 23, T.34S., R.6W., W.M., Google 2010

