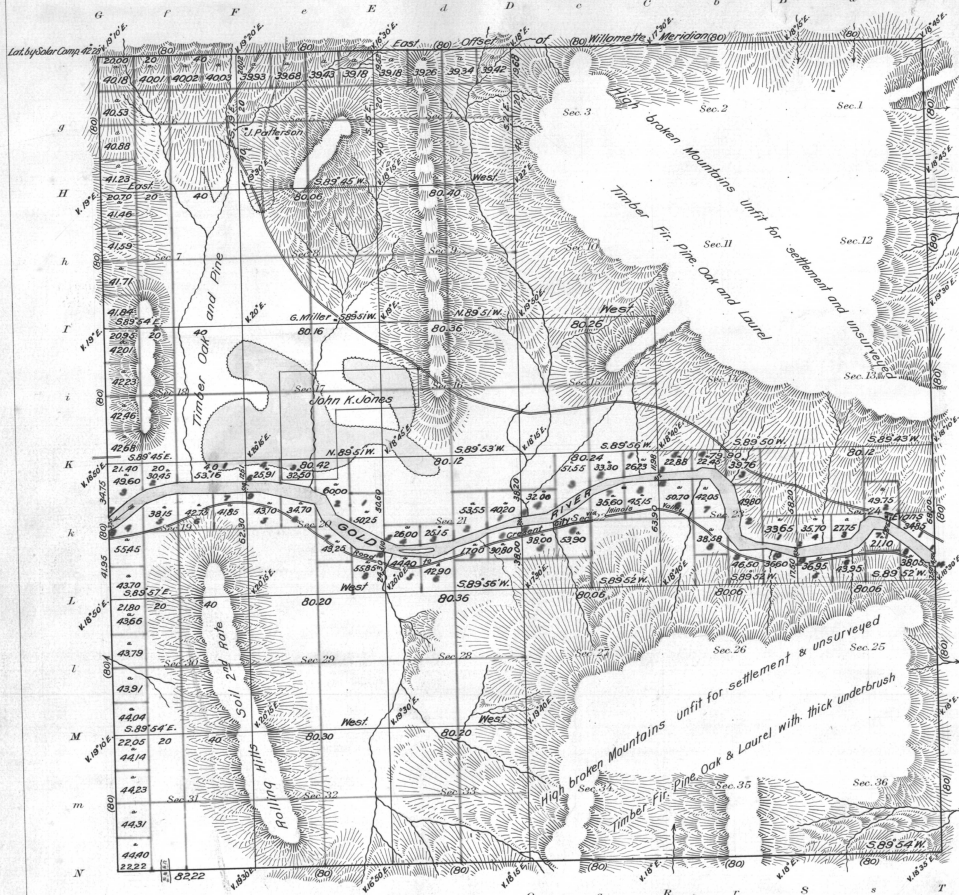


Township No. 36 South Range No. 5 West, Willamette Meridian.



I Certify this to be a correct copy of the Original plat on file in this office
 U.S. Surveyor General's Office
 Portland, Oregon, September 20, 1855
 C. Gardner
 Surveyor General of Oregon.

Areas in Acres	
Public Land	
Indian Reservation	
Indian Allotments	
Mineral Claims	
Water Surface	
Total Area	

Scale 40 Chains to an inch
 Mean Magnetic Declination

Survey Designated	By Whom Surveyed	Contract No.	Date	Amount of Survey			When Surveyed	Water charges in the Standard Accounts
				Mts.	chs.	ls.		
Township Lines	Ives & Hyde	47	Aug 10 th 1854	12	02	22	July 30 th 1855	3rd Qr 1855
Subdivisions	Ives & Hyde	47	Aug 10 th 1854	43	09	40	July 30 th 1855	3rd Qr 1855
Meanders				13	73	52		
Total number of Acres				13854.23				

The above Map of Fractional Township No. 36 South Range No. 5 West of the Willamette Meridian Territory of Oregon is strictly conformable to the field notes of the survey thereof on file in this office, which have been examined and approved.
 Surveyor General's Office.
 Salem, July 30th 1855.

C. Gardner
 Surveyor General of Oregon.