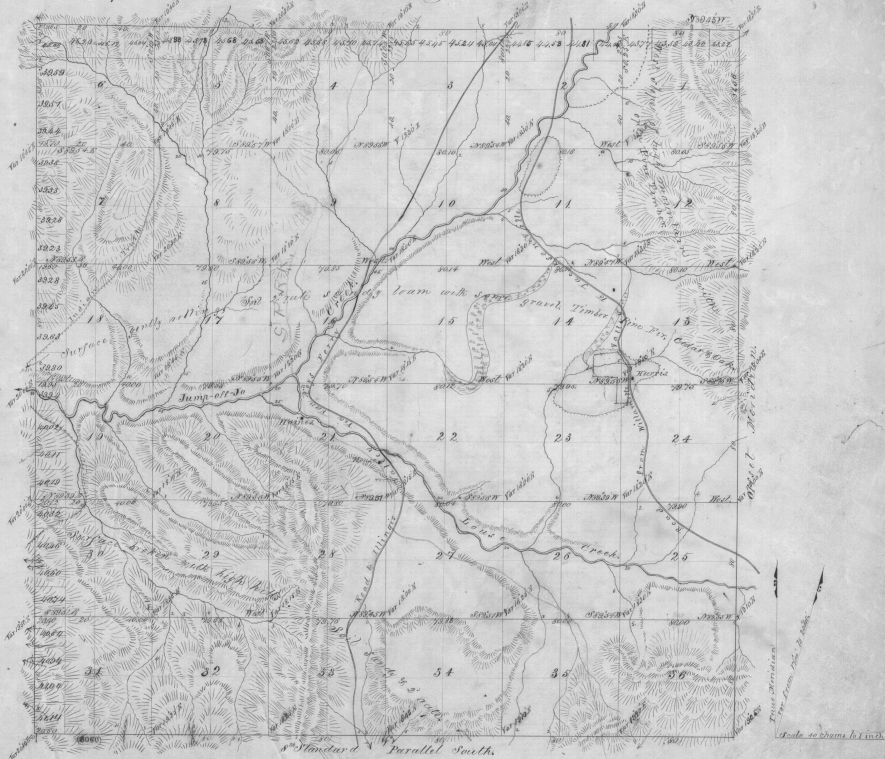


Township N. 35 South Range N. 6 West of the Willamett Meridian.



Point Designated	Bearing	Distance	Course	Distance	Course	Distance	Course
Township Lines	S. 81° 30' E.	54	S. 81° 30' E.	5	S. 81° 30' E.	5	S. 81° 30' E.
Subdivisions	S. 81° 30' E.	54	S. 81° 30' E.	10	S. 81° 30' E.	10	S. 81° 30' E.
Total number of acres		33,165.76					

The above map of Township N. 35 South of Range N. 6 West of the Willamett Meridian, Territory of Oregon is hereby confirmed to the field notes of the survey thereof on file in this office which have been examined and approved.  
 Surveyor General's Office  
 Salem, O. R., March 21st 1856.  
 C. K. Garrison  
 Surveyor General