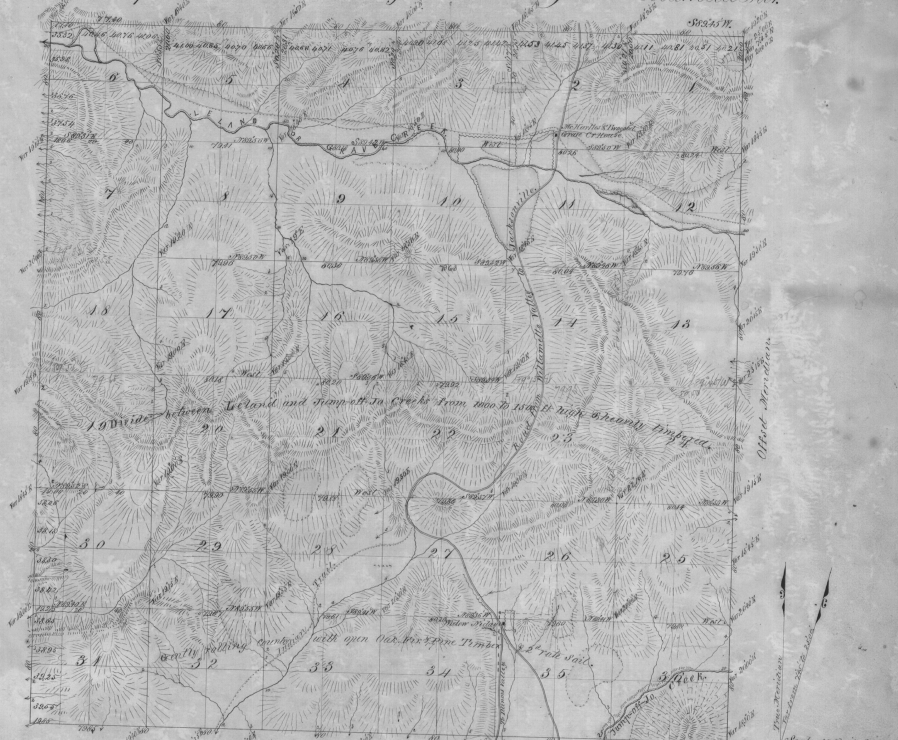


Township No. 34 South Range No. 6 West of the Willamette Mer.



Survey Designated	By Whom Surveyed	Contract No.	Contract		Amount Surveyed		When Surveyed
			date	Acres	Chains	Links	
Township Lines	Sabin & Hyde	511	February 1855	11	79	85	March 24-25-56
Sub Divisions	Sabin & Hyde	514	February 1855	53	76	78	March 24-25-56
Total number of acres			13,552.26				

This also map of Township No. 34 South of Range No. 6 West of the Willamette Meridian, Survey of George A. Sabin, conformable to the field notes of the Survey being on file in this Office, which have been examined and approved, George S. Howard, Surveyor General of Oregon, Union City, March 24-1856.

E. H. Carman
Asst. Commr. of Oregon